

Send Now For Free Book and Sample

"For more than five years I have been experimenting with our experts to find the BEST culvert for all-round uses. We



sought the markets of the world for one that was just right; and we didn't find it. If we had, we'd have bought the patent rights for Canada. Finally, last spring we struck the idea. Then we put in some expensive months

in making that idea better—and NOW we've got a culvert that is so far ahead of any other there's no comparison."

"You'll read something about it here; but to KNOW how 'way-ahead it really is, you'll want to see the sample (sent free) and read the booklet (free, ditto). With that before you, you will soon see why every Reeve, or Warden, or Town Councilor, or anybody who has any use for culverts at all,—will find it pays to get in touch with me right NOW. I'm asking you to lay aside your notions of what makes a good culvert, and a cheap culvert and find out about this NEW culvert. I don't expect you to buy a foot of it until it PROVES to you that Pedlar Culverts are in a class by themselves, and that you can't afford to overlook them. Let us start that proof toward you soon—address nearest Pedlar place."

G. A. Pedlar

Frost-Proof, Rust-Proof, and Water-Proof

This triple-rib flange-lock principle, found only in Pedlar Culverts, not only adds greatly to the strength of the piping and makes a perfect joint—practically as good as if welded—but it also allows for expansion and contraction under cold or heat. Though a Pedlar Culvert, of any length, be frozen solid full of ice, it will not split nor spring a leak.

Send for Free Sample and Booklet 21—Address

State Your Probable Needs and We Will Quote Prices and Discounts

BRANCH WAREHOUSES

HALIFAX	16 Prince St.
ST. JOHN, N.B.	42-46 Prince William St.
QUEBEC	127 Rue du Port.
MONTREAL	321-3 Craie St.
OTTAWA	423 Sussex St.
TORONTO	115-113 Bay St.
LONDON	86 King St.

ADDRESS OUR NEAREST WAREHOUSE



WE WANT AGENTS IN SOME LOCALITIES

WHITE FOR DETAILS

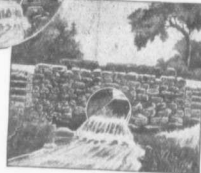
MENTION THIS PAPER

Learn about the strongest, most practical, most durable and easiest-laid culvert ever made—that's

PEDLAR Perfect Corrugated Galvanized CULVERT



A structure like this, with Pedlar Culvert, won't wash out nor need repairs.



A few hours' work and a few dollars will put a modern and permanent culvert in place of a ramshackle bridge. Easily laid by anybody.

Made of Special Billet Iron, Extra Heavy

In very size of Pedlar Culvert, which comes in all standard diameters from 8 inches to 6 feet, we use nothing but the best grade of Billet Iron, specially made for us, of extra-heavy gauge (14 to 20 gauge, according to the diameter). This Billet Iron curved into semi-cylinders—curved COLD, so there will never be any variation from exact dimensions; and it is then deeply and smoothly corrugated on a special press that puts a pressure of SIXTY TONS on every square inch of the metal. The corrugations, therefore, are uniform and very deep.

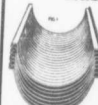
Galvanized After Being Pressed Up

When the corrugating process is done, the sections are galvanized by our exclusive process that covers the entire surface with a thick coating of zinc spelter. Every edge, every crevice is heavily coated with this rust-proof, corrosion-proof galvanizing, not a spot is left unprotected. This is the only culvert galvanized after being shaped. Is absolutely Rust-Proof.

Will Stand Incredible Strains

The heavy-gauge Pedlar Billet Iron sections, deeply corrugated and locked together without bolts or rivets by our compression triple rib (this rib is flat—not corrugated), make a culvert that will stand enormous crushing strains, and neither give nor spring. A thin cushion of soil on top is all the protection such a culvert needs against traffic; and no special precautions need be observed in laying it,—it will stand what no other culvert can.

Compact—Portable Easily Laid



Half-sections nested for shipment.

Note that the ribs are flat, and the curved part of the cylinder deeply corrugated. These ribs add vastly to the culvert's strength.



Sections in course of assembling.



Clinching the flange lock—no bolts, no rivets, no makeshifts.

Unskilled labor, with a single tool, quickly makes the flange together, forming a triple joint that is tighter and better than any riveted or bolted joint can be.