



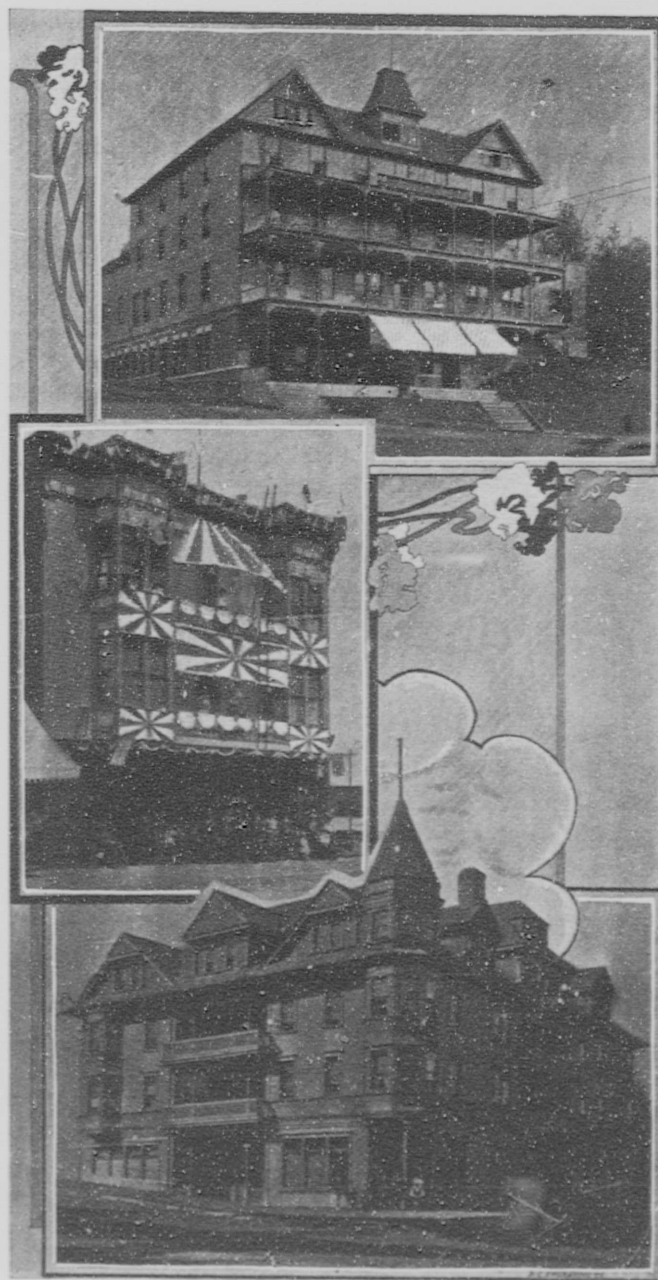
POST OFFICE, NELSON.

city. It was incorporated only in 1897, but ever since has made regular and substantial progress. Including the suburbs it has a population of some 6,000 people, but the city has most of the facilities and conveniences of one of many years longer standing. Possessing its own electric light and water systems, an electric street car service and public buildings that supply the wants of a small metropolis, Nelson is an up-to-date town. Situated at an altitude of 1,760 feet above the sea level and on the southern shore of a beautiful stretch of water, Nelson presents many advantages as a residential city, while in addition to its natural attractions it has those of excellent schools, good churches, a large and well appointed hospital, and many well supported social, athletic and educational clubs and societies.

Its proximity to the lake—as the broadening out of the river which flows past it is generally called—gives it a charming water course, and during the summer months these waters are covered with steam, electric and gasoline launches, rowing and sailing boats, and many are the picnic and fishing parties to be met with along the shores, testifying to the enjoyment with which they appreciate the many natural advantages that the City of Nelson possesses.

The city is situated upon a gradual slope mostly trending to the North-West, with a gravelly soil, and the natural fall renders drainage almost perfect and gives a complete high pressure water system throughout it.

city. It was incorporated only in 1897, but ever since has made regular and substantial progress. Including the suburbs it has a population



SOME OF THE PRINCIPAL HOTELS, NELSON.