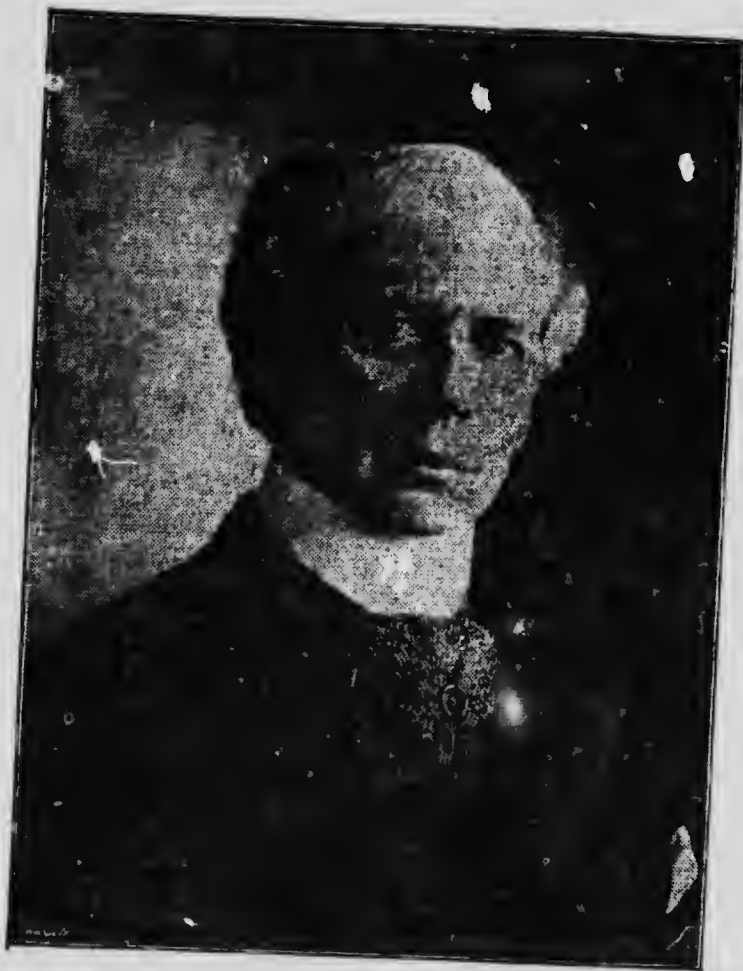


can serve as a model. This has come about during the administration of the present Liberal Government, and it is not too much to say that the policy and administration of the Government have had much influence in this change.

Why then, should the people of Canada vote condemnation of this Government, and contribute in any way to its displacement, in favor of a party led by men,

who seem to have no united programme or policy, and have not been able to put forward anything but a campaign of slander and scandal as a justification for their appeal to the electorate? It cannot be possible that the intelligent electors will vote for the Tory candidate, but will sustain the candidate of Sir Wilfrid Laurier.



SIR WILFRID LAURIER.