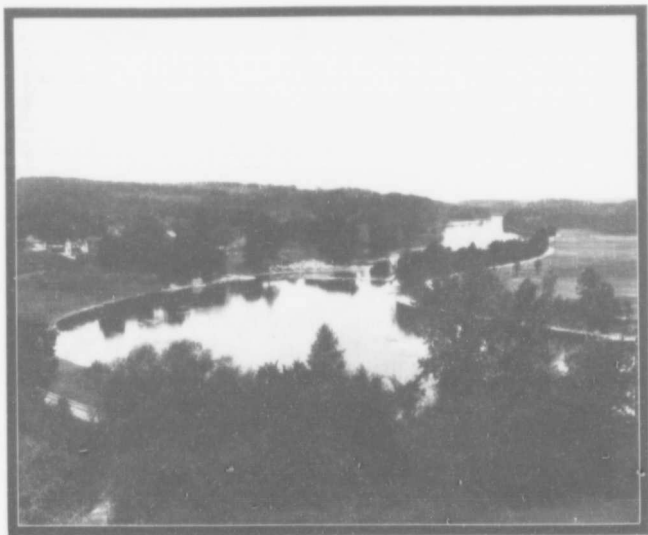


toria Jubilee Bridge over the St. Lawrence River. It is owned by the Grand Trunk Railway System, and replaces the old Victoria tubular bridge erected by this company in 1860. It is one of the longest bridges in the world, being nearly two miles in length, including approaches, and cost, including original structure, \$9,000,000. The view from the train while crossing, with the city in the foreground, backed up by the graceful mountain, is one of much grandeur, and if seen while approaching the city from the south shore, more especially at night, with the city illuminated by thousands of electric lights, the scene is especially grand. It is an open steel double-tracked structure, with carriageways and footwalks on each side of the main trusses, and altogether is one of great beauty.

Continuing on toward Portland, Me., the scenery is totally different from that which is seen west of Montreal. Here a diversity of the pic-

Victoria
Jubilee
Bridge

Montreal
to
Portland



ST. FRANCIS VALLEY, NEAR SHERBROOKE, QUE.

turesque is enjoyed; at one time the train rushes along the shores of a placid stream, and at another the powerful engine is exerting every effort to climb the steep grades that are necessary through the mountain passes, and the view at times is awe-inspiring and grand in the extreme while gazing out of the car windows at the towering mountains that rise sheer from the track to dizzy heights above.