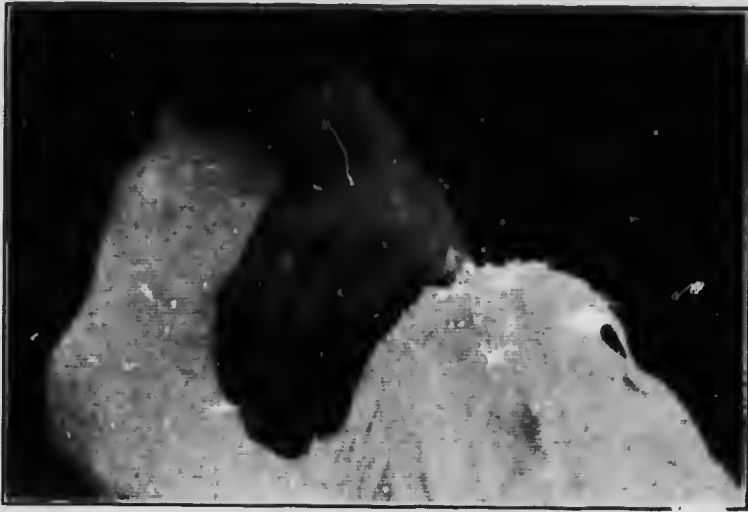


IV. KEEL.

The keel-bone or the lowest lengthwise bone or member in the frame make-up of a fowl should be long and straight, well covered with medium texture and abundant fleshing, depending, of course, on the time of year handled.

V. TAIL.

The tail should be well spread, indicating a good long, broad back and deep body. This is judged by placing the hand across the back at the juncture of the back and tail, as seen in cut 18.



Showing well-spread tail, indicating long, wide, broad back.

It is also shown by the spread across the rear of body and depth from tail to underline of the body, as shown in cut 19.



Showing good straight legs set well apart, as well as good spread and depth at rear of body.