

NEW AGYU EXHIBIT drawn from / drawn upon

by MIKEL JURIMA

Drawn from/drawn upon is the exciting new art exhibition currently at the Art Gallery of York University (AGYU). The artists — Stephen Andrews, Francoise Boulet, John Clark, Cathy Daley and Anne Youldon — are all young, and their recognition in the Canadian art scene is still growing. The 36 pieces in this collection are the artists' most recent works this year.

The bold, innovative styles are attractive and striking to the eye. Youldon's oilstick collage works are impressive. The immense canvas is covered in brown-black with bright orange stains creating an almost attractive "ugliness" about her work.

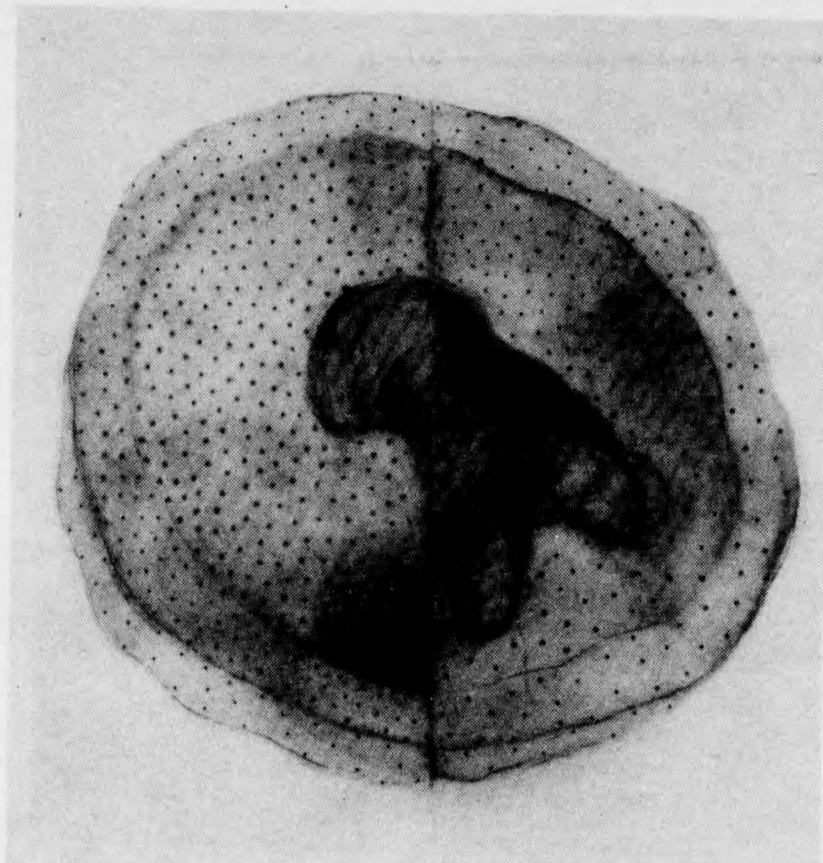
Dark and foreboding, one is reminded of the inescapable presence of iron and oil, and our dependence on them. The beautiful rust colour of the second work (untitled) is a curious misshape of colours with chaotic blotches and scratches darting through it.

Andrews' mixed media on mylar is a very peculiar piece composed of predominantly heavy black scratches and scribbles drawn to form a human body. His 16 pieces of oil and beeswax on panel are the most fascinating works in the gallery.

Most of the pieces are small, male nudes drawn on the centre of the waxed panel. At first, they seem like something out of a primitive, violent era, but at a closer look, there is something disturbingly modern about them.

Andrews says, "How can something simple like drawing begin to represent the contradictions of the contemporary body? Today, the body is under siege from contaminants and immunological disorders, and threatened with obsolescence by cybernetics."

Cathy Daley has two beautiful pieces of pastel and oil on paper. Both are views of a woman's dress, spread open like the tail feathers of a peacock. Beautiful black dots and shading combine to give the cocktail dress a silky look and



Cathy Daley's "Dress"

photo by: Peter MacCallum

feeling, with the multi-circled layers conveying the sense of elegance and richness.

John Clark's work is not a personal favourite, particularly "Six Trees (The Garden)," with its bizarre distortion and blackish green quivering tree figures. Indeed, the work is reminiscent of a haunted garden, like in *The Wizard of Oz*, where the trees shook themselves to life.

However, the artist's explanation of his work is interesting: "The unique ability of the imagination to move effortlessly from imagining to memory to fantasy like a waking dream is reflected on the page as the drawing itself moves from mark to shape to image."

Francoise Boulet's three works of graphite on paper are fascinating, sketch-like drawings, using thick, heavy charcoal strokes, coming together to form a pat-

terned picture. The third in his series (untitled) is like a prairie wheatfield in autumn, with the grain stalks heavily loaded down and bending under the blazing sun. Instead of a circle, the sun is shown by chaotic, circular strokes of lines, as if it was in the very act of rising or setting.

Boulet has achieved his goal when he says, "You just create it (the drawing) in the energy and lead it towards its materialization. I love to be able to see this in progress, to see it always in motion, and I feel good about a drawing when it's able to stay in motion when completed."

Taken together, these new works of arts are a must-see for anyone interested in younger Canadian artists. The exhibition, which runs until June 11, is very well-arranged and looks great in the newly renovated black and white AGYU.

Mail system to assist in enrollment

by SUSAN VANSTONE

Under York's new Voice Response-Enrollment System (VR-ES), undergraduates in the faculties of Arts, Fine Arts and Science without access to a touch-tone telephone can now be accommodated by a mail enrollment system.

According to Advising Centre co-ordinator Nancy Accinelli, "if a serious problem in obtaining access to a touch-tone phone can be proven," students can request enrollment by mail through the Student Programmes Office or Advising Centre of their faculty.

"This is not an alternative to VR-ES," said Accinelli. "We look for sufficient reasons, such as being out of the continent, or in remote areas without the touch-tone system," she continued.

Although their decision to make enrollment by mail possible was finalized in mid-April, the faculties and Office of the Registrar

chose not to advertise, as it was felt "The students would be best served by using the system in place," said Accinelli.

With 62 students currently on mail enrollment, Accinelli said it was expected that students would call the Advising Centre to look for alternatives. Therefore, advertising for mail enrollment was not necessary.

Also, some students have been concerned about the security of the system. With an access code of combined student number and birth date, tampering could be a possibility. However, Accinelli said security shouldn't be a problem. Students can apply at the Office of the Registrar to use a "pseudo-birthdate." As well, a student is allowed only three attempts to enter a correct access number.

In August, students will be mailed enrollment confirmation forms listing their courses. The Advising Centre suggests students further confirm enrollment through VR-ES before classes begin. If a student suspects interference, Accinelli suggests the student contact Student Programmes and the Registrar's Office who will confirm the student's proper course selection.

artscalendar

compiled by HOWARD KAMAN

GALLERIES

The IDA Gallery is pleased to present an exhibition of sculpture by **Mary Catherine Newcomb**. The artist's *Graduate Thesis Exhibition* will be shown May 23-26, in the IDA Gallery.

The IDA Gallery also presents a *Convocation Show* of works by students who have completed their BFA in Visual Arts. The show runs from May 29-June 14, the date of Convocation.

The Art Gallery of York University presents *Drawn From/Drawn Upon*, collection of works by **Stephen Andrews, Francoise Boulet, John Clark, Cathy Daley and Anne Youldon**. The show runs until June 11, at the AGYU.

The Glendon Gallery presents a showing of works by **Cynthia Kemerer**. The show runs until May 21, at the Glendon Gallery, 2275 Bayview Ave.

FILM

There will be a *Student Gala Screening* of works by graduating students of the Department of Film and Video. The show, comprising of works in 16 mm film, takes place at the **Bloor Cinema**, 506 Bloor Street West, at 1 pm. Admission is FREE, but tickets are required. For ticket information, please phone 736-5149.

Quality from a Technician's
Point of View



BETA REPRODUCTION INC.

2700 STEELES AVE W., UNIT 1
CONCORD, ONTARIO L4K 3C8
738-5353

OFFSET
PRINTING

1, 2 EVEN 3

COLOUR PRINTING!!

NOW AVAILABLE AT
BETA

plus

Duplicating

High Speed Duplicating • Full Colour Copies
Self Serve Copies • Transparencies
Certex Binding • 3 Hole Punch • Stapling
Folding • Cutting

Typesetting

Business Forms & Stationary
Brochures • Catalogues • Manuals
Flyers • Price Lists • Term Papers
Newsletters • Programs • Posters
Invitations • Resumes • Tickets
Leaflets • Reports • Certificates • Graphics

If you think *they* make you look good on paper.
Give us a try, we'll make you look GREAT!!

LSAT

GMAT

Prep Courses

- Each course consists of 20 hours instruction for only \$170 or 32 hours for only \$235
- Courses are tax deductible
- Complete review of each section of each test
- Extensive home study materials
- Your course may be repeated at no additional charge

Classes for the **June 12 1989 LSAT**
20 hour course **June 2, 3, 4/89**
32 hour course **May 21, 22, June 3, 4/89**

Classes for the **June 17, 1989 GMAT**
20 hour course **June 9, 10, 11/89**
32 hour course **May 20, 21 June 10, 11/89**

For information:
GMAT/LSAT Preparation Courses
(416) 923-PREP (7737)

CDC

Counselling & Development Centre

WE CAN HELP

Personal Counselling
Groups and Workshops
Learning Skills
Self-Change and Management
Self-Help Centre
University Skills Series
Community Mental Health
Consultation

Room 145
Behavioural Sciences Building
736-5297

SUMMER EMPLOYMENT & CAREER OPPORTUNITIES await you now!

If you have any office skills, especially typing or word processing knowledge, Hunt Personnel Temporarily Yours has a variety of opportunities available for a few days, a few weeks, all summer, and opportunities for you starting your career.

INFORMATION LINE 730-1700



HUNT PERSONNEL
TEMPORARILY YOURS