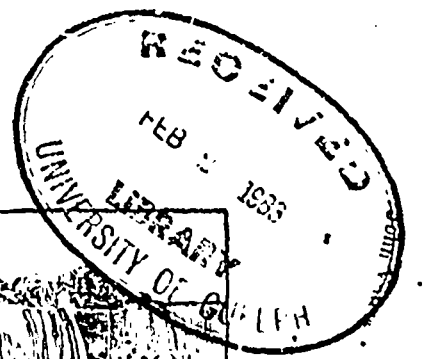


PER
S
1
C32
V. 6 #45
1884



AND ORGAN OF THE ONTARIO BEE-KEEPERS' ASSOCIATION.

VOL. VI. } WHOLE No. }
No. 35 } 305 }

WELLAND, ONT., WEDNESDAY, JULY 16, 1884.

TERMS: ONE DOLLAR
Per Annum
IN ADVANCE

"LAMARTINE."

Our illustration this week is of the beautiful Percheron stallion Lamartine, owned by Powell Brothers at their Shadowland Stock Farm, Springboro, Crawford County, Penn. Lamartine is a fine dapple bay, foaled in 1876 and imported in 1883. He is registered in the Percheron Stud Book No. 2890, and in the National Register of the Norman horses No. 2517. He is in every sense a fine animal.

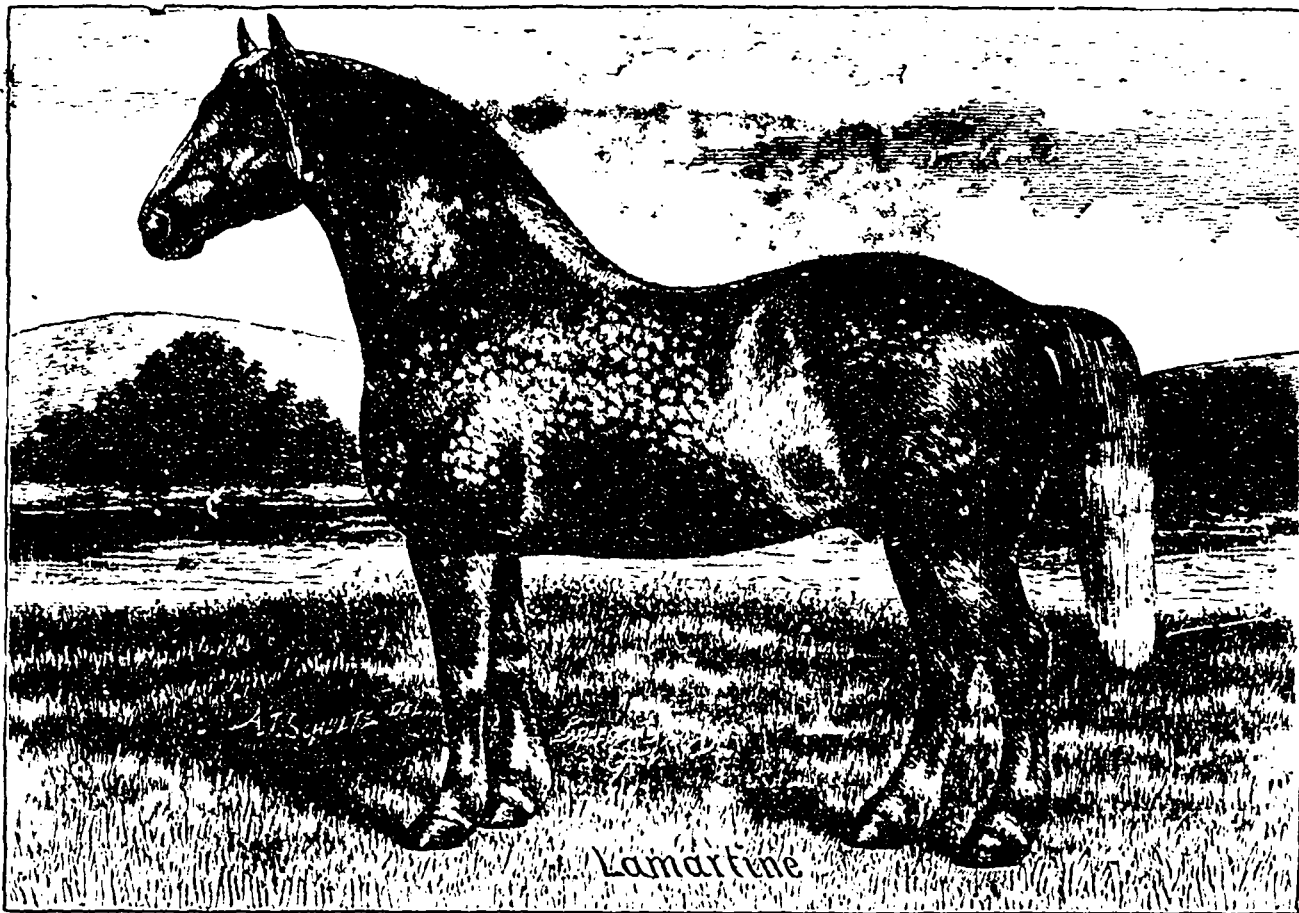
THE COW.

On farms where the dairy is an important

part of the husbandry, provision is made by sowing soiling crops, to supplement the diminished pasturage in midsummer. Those who keep only the "family cow," or two or three cows, find the flow of milk to decrease, and often without any green crop provided for keeping it up. The territory of those who keep but a single cow is often restricted to a small pasture and a vegetable garden. The garden should be made to supplement the pasture, and this may be done to some extent by securing for the cow much from the garden that usually goes to waste. Every one who has a garden tries to have an abundance of green peas. After the vines have yielded their last profitable picking, instead of allowing them to remain upon the ground until that is wanted for another crop, feed the vines to the cow while they are still green and succulent. So with sweet corn. When the last ear is plucked from a stalk or a hill do not wait until the whole patch or row can be cleared, but pull up the stalks that have been deprived of ears, a few at a time, and feed them while in their best condition. The outer leaves of early cabbages and the

has diminished, and the shrinkage will therefore be less. The weight of the crop will be the largest in proportion to the nutritive value of its constituents. The amount of nitrogen not present as albuminoids will be at its lowest point, fiber will not be so excessive as to prevent digestion, and the nutritive ratio will be more advantageous. If cut earlier the shrinkage is larger, although the fiber is less, and albumen is a little larger. The palatability may be increased, but the total nutriment to the acre will not be so large, and the nutritive ratio will be more abnormal. The disadvantages of late cut-

ting are evident in the increase of fiber destroying the digestibility of the nutriment, and the falling off of the albumen by conversion into amides. This is not made up by the larger crop cut. self handsomely and pleasantly to the driver or rider, goodness of action, strength, speed and safety.



part of the husbandry, provision is made by sowing soiling crops, to supplement the diminished pasturage in midsummer. Those who keep only the "family cow," or two or three cows, find the flow of milk to decrease, and often without any green crop provided for keeping it up. The territory of those who keep but a single cow is often restricted to a small pasture and a vegetable garden. The garden should be made to supplement the pasture, and this may be done to some extent by securing for the cow much from the garden that usually

leaves of brots, carrots and turnips carefully saved will make an important item in the succulent food for the cow.

TIME FOR GRASS CUTTING.

The analytical chemist of the Ohio Department of Agriculture, summing up the results of analysis of nearly all the cultivated grasses, says it is apparent that in most cases the time of bloom, or hereabouts, is the fittest for cutting grasses in order to obtain the most nourishment and largest relatively profitable crops, and for the following: The amount of water

ing are evident in the increase of fiber destroying the digestibility of the nutriment, and the falling off of the albumen by conversion into amides. This is not made up by the larger crop cut.

A GOOD HORSE'S POINTS.

We are told, and with truth, that a thin, clean, good head and cheerful eye are indicative of an amiable and generous temperament and disposition. A head well put on, with a yielding and somewhat arched neck, suggests that the head may be carried well and also that such a horse

self handsomely and pleasantly to the driver or rider, goodness of action, strength, speed and safety.

Subscribe for the CANADIAN FARMER.

Cucumbers can hardly be kept too moist and close if good crops are desirable. Top dress with rich soil or manure, and water with sewage or manure water, made from cow or pigeon's dung. Sow or strike cuttings for successional crops.