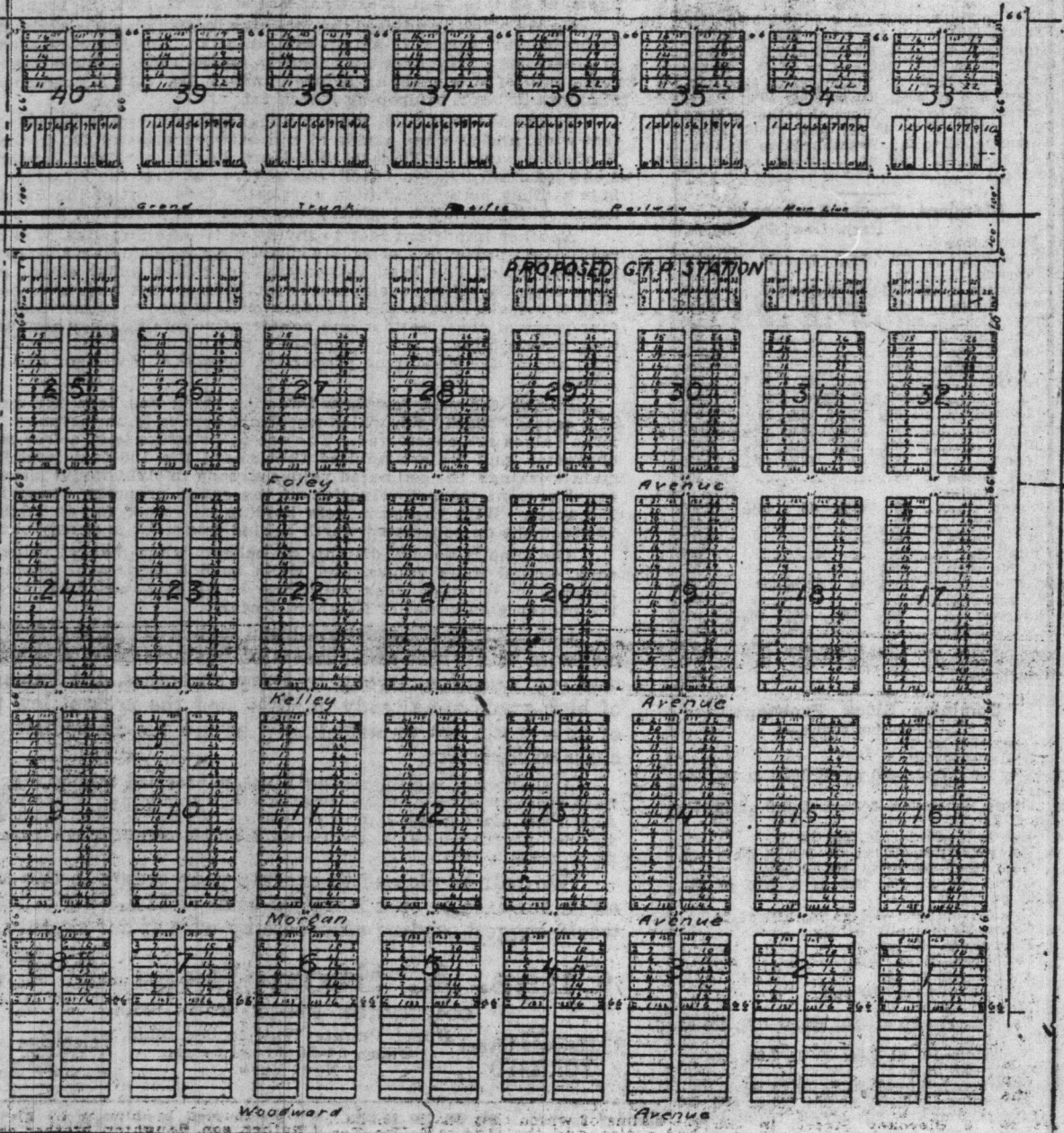
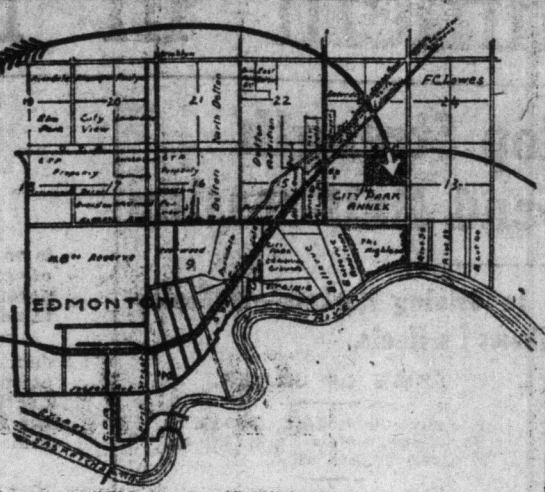


INDUSTRIAL HEIGHTS

PLAN
showing subdivision of
NE 1/4 SEC. 14, TR. 53, R. 24, W. 4

SCALE 800 FT. = 1 INCH

H. R. Keith P.L.S.
Alberta

The Plan of Industrial Heights. This Sub-division is just to the north and above the City Park Annex.

INVEST NOW IN INDUSTRIAL HEIGHTS

IN THE CITY OF

EDMONTON

THE HEART OF OPPORTUNITY

WHEAT, COAL and TIMBER

Edmonton is surrounded by many natural resources; each one would make a city great. Edmonton is the portal of Peace River. Edmonton is fast becoming the industrial city of the west, and "Industrial Heights" is on the line of industry's march.

CITY LOTS \$200 to \$350

THE progress of Edmonton has been so consistently phenomenal that it has almost ceased to create wonder in the mind of any person familiar with Western Canada. But to those who do not intimately know Edmonton, the capital of that wonderfully rich province, Alberta, the growth, enterprise and business energy of this rising city of the real Northwest is amazing.

FOR years Edmonton was without direct railway connections. Only to-day are the railways coming in.

And yet, without that direct railway communication—which is the prosperity basis of many places—Edmonton has grown to a city of 31,000 people, adding 20,000 in five years. Now three great transcontinental railways to the Peace River District; the coming home of hundreds of thousands of railers of the finest wheat in the world. All about Edmonton are thousands of fertile farms.

It is not farming alone that has made Edmonton great. It is a city whose richness in natural resources will make it one of the most renowned in the world. It is just coming into its own. Coal fields stretch in a giant arch to the northeast and east of Edmonton. Quietly and with no publicity millions have been invested in the coal fields, the wealth of which can scarcely be appreciated. The Edmonton district is rich in timber. The lands of Edmonton district grow the best grain that comes out of the west. Edmonton is the centre of a veritable empire of wealth.

AND while the development of these natural resources is causing the city to throb with hot, surging enterprise and energy, the industrial side of Edmonton is just stretching itself into life. Great industries are establishing plants in Edmonton that will make this city the industrial city of the west. And these factories are located in the northeast part of the city, are spending millions of dollars, and all this great development is going on within a half-mile of Industrial Heights.

INDUSTRIAL HEIGHTS—it is shown on the plan herewith—is within the city limits of Edmonton, and adjoins its industrial section, North Edmonton. There one company—the Swift Canadian Company—have a

pay-roll of over \$1000 a day. The P. Burns Company are starting to build a million-dollar plant. Other big concerns are preparing to build—the industrial growth is all toward Industrial Heights.

INDUSTRIAL HEIGHTS is next in line for advancement. It has everything in its favor. Even now several manufacturers are negotiating for factory sites along the railroad in Industrial Heights.

THE street cars now run within half a mile of Industrial Heights; the tracks will be extended to this sub-division in the very near future. Negotiations are now on with the G.T.P. for a new station in Industrial Heights. At present all G.T.P. trains entering the city stop on the property. The sub-division is within the new city limits of Edmonton, and the trend of improvement and industry is toward it. Vacant lots between the postoffice at North Edmonton and within half a mile of Industrial Heights are selling now at \$800 to \$1000. Read the prices at which we offer our lots. They are marked away below their value, compared with other lots in Edmonton. We must sell them now. Most lots are 35 feet by 133 feet, some are 33 feet by 133 feet to a 30-foot lane.

THE PRICES.

In blocks 1 to 24, inclusive: Corner lots \$200
Inside lots \$200
In blocks 25 to 40, inclusive: Lots 11 and 12 \$200
Lots 13 to 15 \$250
Lots 16 and 17 \$200
Lots 18 to 21 \$250
NOTE—All trackage property on each side of the G.T.P. is reserved for manufacturers.
All lots facing on street leading to the proposed G.T.P. Station withheld from present sale for higher prices.
Blocks 2, 3, 4, 10, 15, 24 are being sold in Edmonton.
Blocks 5, 12, 16 are being sold in Saskatoon.
Blocks 6, 7, 35, 31, east half of 30 and lots 11 to 22 inclusive in blocks 37 and 38, are being sold in Winnipeg.

THE TERMS.

One-third cash, balance 9, 9 and 12 months, at 6 per cent.
If all cash, 4 per cent discount off two-thirds of purchase price.
Special Terms—Monthly payments—15 per cent cash; balance in 12 monthly payments, with interest at 6 per cent.
BUY IN INDUSTRIAL HEIGHTS NOW—NOW IS THE TIME.

ADDRESS
INDEPENDENT REAL ESTATE CO.
TORONTO, 116 West King St. PETERBORO, 340 George St.
TELEPHONE MAIN 1596 TELEPHONE 133
WM. GALBRAITH, Manager, 729 Dovercourt Rd.
TELEPHONE COLLEGE 985

SPECIAL TO MANUFACTURERS
Eighty good trackage lots on each side G.T.P. trackage, excellent location for warehouses or manufacturing concerns—only delivered from the rails, about two miles east of property, to the property at \$250 per lot, 10c less than to the heart of the city.
H. P. KENNEDY, TORONTO—708 Wellington Avenue, phone Adelaide 560, or Peterboro.

OFFICES
—FOR—
RENTTELEPHONE
BUILDING

76 Adelaide St. West

Central Location.
Fireproof Construction.
Exceptional Light and Ventilation.
Space to Suit Tenants.

KENNETH J. DUNSTAN, Manager

UNION STOCK YARDS.

There are 125 car loads of live stock at the Union Yards, comprising 2368 cattle, 402 hogs, 122 sheep and lambs and 47 calves.

New York Cattle Market.
NEW YORK, Nov. 11.—Beef—Receipts, 220 head; no trading; feeling steady.
Calves—Receipts, 96 head; unchanged.
Sheep and Lambs—Receipts, 400; market steady; good to prime lambs, \$5.75 to \$6.00; prime sheep, \$5.75 to \$6.00; pigs, \$5.00 to \$5.25; dairies, \$5 to \$6.
Hogs—Receipts, 2300; nominally firm.

East Buffalo Live Stock.
EAST BUFFALO, Nov. 11.—Cattle—Receipts, 20 head; steady.
Hogs—Receipts, 200; active and steady; heavy, lower in light, heavy, 16.00 to 16.50; mixed, \$2.50 to \$2.80; western, \$2.50 to \$2.80; pigs, \$5.00 to \$5.25; dairies, \$5 to \$6.
Sheep and Lambs—Receipts, 600 head; sheep active and steady; lambs slow and 50 lower, lambs, \$4 to \$5.

Liverpool Cattle Market.
LIVERPOOL, Nov. 11.—John Rogers & Co. say to-day that the number of cattle for sale at Rixhead was small and although the demand was poor, the market held firm at prices last called, which were: For Shute steers, from 12 1/2 to 13 1/2; Canadian, from 12 1/2 to 13 1/2; and ranchers, from 11 1/2 to 12 1/2 per pound.

Chicago Live Stock.
CHICAGO, Nov. 11.—Cattle—Receipts estimated at 300; market dull, steady;

beef, \$4.65 to \$5.10; Texas steers, \$4 to \$4.50; Western steers, \$4.25 to \$4.75; stockers and feeders, \$3 to \$3.50; cows and heifers, \$2 to \$3; calves, \$5.50 to \$6.00.
Hogs—Receipts estimated at 12,000; market slow; light, \$5.70 to \$6.42 1/2; mixed, \$5.35 to \$6.52 1/2; heavy, \$5.30 to \$6.35; rough, \$5.30 to \$6.35; good to choice heavy, \$6.15 to \$6.35; pigs, \$3.75 to \$3.85; bulk of sales, \$6.20 to \$6.45.
Sheep—Receipts estimated at 1500; market steady; native, \$2.50 to \$3.80; Western, \$2.55 to \$3.80; yearlings, \$3.75 to \$4.40; lambs, native, \$3.50 to \$5.90; Western, \$3.75 to \$5.70.

Buffalo Grain Market.
BUFFALO, Nov. 11.—Spring wheat dull; No. 1 northern, carload, \$1.30; winter, No. 2 red, 96c; No. 3 red, 95c; No. 2 white, 96c.
Corn—Easy; No. 2 yellow, 73 1/2c; No. 1 do, 75c, all on track, thru-bills.
Oats—Firm; No. 2 white, \$1.40; No. 3 do, 13c; No. 4 do, 30c.
Barley—Malting, \$1.18 to \$1.25.

Winnipeg Grain Market.
WINNIPEG, Nov. 11.—The market opened steady, but rapidly declined during the last hour of business, and that in the face of lower receipts, bad weather reports and an enormous percentage of the crop sold in the fields, and some of which may never be threshed. The cash demand was poor, and there was no improvement whatever on the export trade; the business in this line being very much off in the meantime.
November closed 30c, Dec. 4c and May the down from Friday.
Oats were steady, November closing

Every Minute

Not a moment passes but the extension of Toronto northward comes nearer realization. Nothing can stop the movement, and nothing can hold back the inevitable advance in prices of real estate. We invite special attention to the attractive offers in lots in

Lawrence
Park

(North Toronto)

No more beautiful location can be found anywhere. Go and see the property. Take Metropolitan car to Glen Grove Avenue—office and agent there.

Lots \$20 Per Foot Up.

Send for our handsome new book on Lawrence Park, showing developments and houses erected up to date.

Dovercourt Land, Building and Saving Co., Ltd.
24 Adelaide-street East.
Tel. Main 7293

unchanged, December 1c less and May advanced 1c on Friday's close.
There are only 50 cars in sight for inspection and the weather is reported severe from all points. During the last half hour the cash market went to pieces and prices were not closed in many grades.
Oats grain: Wheat—No. 1 northern, 96c; No. 2 do, 95c; No. 3 do, 94c; No. 4 do, 93c; No. 5 do, 92c; No. 6 do, 91c; No. 7 do, 90c; No. 8 do, 89c; No. 9 do, 88c; No. 10 do, 87c; No. 11 do, 86c; No. 12 do, 85c; No. 13 do, 84c; No. 14 do, 83c; No. 15 do, 82c; No. 16 do, 81c; No. 17 do, 80c; No. 18 do, 79c; No. 19 do, 78c; No. 20 do, 77c; No. 21 do, 76c; No. 22 do, 75c; No. 23 do, 74c; No. 24 do, 73c; No. 25 do, 72c; No. 26 do, 71c; No. 27 do, 70c; No. 28 do, 69c; No. 29 do, 68c; No. 30 do, 67c; No. 31 do, 66c; No. 32 do, 65c; No. 33 do, 64c; No. 34 do, 63c; No. 35 do, 62c; No. 36 do, 61c; No. 37 do, 60c; No. 38 do, 59c; No. 39 do, 58c; No. 40 do, 57c; No. 41 do, 56c; No. 42 do, 55c; No. 43 do, 54c; No. 44 do, 53c; No. 45 do, 52c; No. 46 do, 51c; No. 47 do, 50c; No. 48 do, 49c; No. 49 do, 48c; No. 50 do, 47c; No. 51 do, 46c; No. 52 do, 45c; No. 53 do, 44c; No. 54 do, 43c; No. 55 do, 42c; No. 56 do, 41c; No. 57 do, 40c; No. 58 do, 39c; No. 59 do, 38c; No. 60 do, 37c; No. 61 do, 36c; No. 62 do, 35c; No. 63 do, 34c; No. 64 do, 33c; No. 65 do, 32c; No. 66 do, 31c; No. 67 do, 30c; No. 68 do, 29c; No. 69 do, 28c; No. 70 do, 27c; No. 71 do, 26c; No. 72 do, 25c; No. 73 do, 24c; No. 74 do, 23c; No. 75 do, 22c; No. 76 do, 21c; No. 77 do, 20c; No. 78 do, 19c; No. 79 do, 18c; No. 80 do, 17c; No. 81 do, 16c; No. 82 do, 15c; No. 83 do, 14c; No. 84 do, 13c; No. 85 do, 12c; No. 86 do, 11c; No. 87 do, 10c; No. 88 do, 9c; No. 89 do, 8c; No. 90 do, 7c; No. 91 do, 6c; No. 92 do, 5c; No. 93 do, 4c; No. 94 do, 3c; No. 95 do, 2c; No. 96 do, 1c; No. 97 do, 0c; No. 98 do, 0c; No. 99 do, 0c; No. 100 do, 0c.

A First Class Cutter
Wanted at the Aber-
deen Woolen Mills
243 YONGE ST.

If You Wish to Buy or Sell

M. 2159 REAL ESTATE M. 2159

We Can Help You

Real Estate Sales Co.

Standard Exchange Building.

Scott and Colborne. ed

YONGE ST. REAL ESTATE SALES CO.

Carleton and Bloor

Streets; 50 ft. by 127 ft. to a lot.

We believe this property will

double in value in two years.

Full particulars on request.

ENGLISH, LIMITED.

20 Victoria Street.

PROPERTY MEDICINES.

PROF. MULVENEY'S Famous Taps

Worm Cure and other world's famous

remedies. 16 Dundas-st. Toronto. ed-7

TOBACCOS AND CIGARS.

LIVE DOLLARD, Wholesale and Retail

Tobaccoist, 125 Yonge-st. Phone

Main 444.

FARMS FOR SALE.

FOR SALE—Some good farms close to

the Town of Barrie. Small payment

cash, balance on mortgage. Apply to J.

N. Brown, Barrie, Ont.

LOST.

LOST—Sorrel horse, white star, left hind

leg capped black; buggy, red gear,

black body, blue knee rug. Reward, \$25.

Standard Stock Exchange, Adelaide 246.

No. 2 do, 88c; No. 3 do, 87c; No. 4 do,

78c.

Oats—No. 2 Canadian western, 45c;

extra No. 1 feed, 34c.

Barley—No. 2, 55c.

Flax—No. 1 h.w., 8c; No. 1 Manitoba,

8 1/2c.

C. N. R. BUYS LAND.

OTTAWA, Nov. 12.—Deeds of several

hundreds of acres of land transferred

from farmers and property owners in

Nepawan Township, southwest of Ot-

tawa to the Canadian Northern Rail-

way, have been registered at the coun-

ty registry office. Toronto division with

of the Ottawa-Toronto division from the

top of an old well yesterday, lifted the

cover, fell in and was drowned.

AUTOMOBILE GARAGES, ETC.

WANTED—At once, a number of sec-

ond-hand cars, good and steady, for a

disposal of, or does it need repair? If so,

we will either repair it or find a quick

sale for same. We have an up-to-date

repair shop, fitted with the latest appli-

ances; all work guaranteed; and, if pre-

ferred, our men will repair your machine

at your own garage. We have a full line

of accessories. Try our gasoline at 10c.

Apply Young Garage, 321 Yonge st.

LEGAL CARDS.

BAIRD, MONAHAN, & MACKENZIE,

Solicitors, 220 Queen St. W., Toronto.

MONAHAN, KENNETH F. MACKENZIE, 2 To-

ront St., Toronto. ed

CURRY, O'CONNOR, WALLACE &

Macdonald, 25 Queen-street East.

FRANK W. MACLEAN, Barrister, 50

Victoria, Notary Public, 31 Victoria-

street. Private funds to loan. Phone

204.

BENSON & LUNNON, Barristers, 30

Victoria, Money to loan Continental

Life Building, corner Bay and Front

streets. T. Herbert Benson, R.L. John

P. Lennor. Telephone Main 323.

TO RENT.

STORE and large brick stable to rent

on Yonge street, near Bloor. Apply

1500 Yonge. Phone North 580.

FLATS TO RENT.

TWO FLATS for light manufacturing,

22 x 30, steam-heated, good floors and

light; closet and sink on each floor. Ad-

dress Wells-Fairbank & Machine Works,

77 Jarvis street.

REMOVAL NOTICE.

DR. MURRAY McFARLANE has re-

moved to No. 190 Bloor street east,

three doors east of Hurley street.

BUSINESS CHANCES.

AN OPPORTUNITY to make five dol-

lars for one. Safe, sure, legitimate.

Small or large sums acceptable. In-

vestigate. Box 15, W. ed.

PRINTING.

BUSINESS CARDS, Wedding Announce-

ments, Invitations, Party Tally Cards,

Office and Business Stationery. Adams

at Yonge street.

ARCHITECTS.

EUGENE W. GORMLOCK, Architect,

Temple Building, Toronto. Main 109

MEDICAL.

DR. DEAN, Specialist, Diseases of Men,

310 Queen St. W., Toronto. ed-7

PATENTS AND LEGAL.

FETHERSTONHAUGH CO. the old

established firm. Fred E. Fether-

stonhaugh, K.C., M.E., Chief Counsel and

Expert. Head Office, Royal Bank Build-

ing, 10 East King Street, Toronto.

Branches: Montreal, Ottawa, Winnipeg,

Vancouver, Washington.

ART.

J. W. L. FORSTER, Portrait Painting,

1000 Main St. West, York, Toronto.

BUTCHERS.

THE ONTARIO MARKET, 25 Queen

West, John Goshel. College 906. ed-7

EDUCATIONAL.

AT REMINGTON Business College,

corner College and Spadina, you can

and night school; thorough courses; in-

dividual instruction; positions assured;

scholarship fees. ed-7

SHUTTHAND, bookkeeping, general im-

provement, civil service, matriculation,

chartered accountancy, taught individu-

ally at our day and night schools. Get on

yourselves. Dominion Business College,