

**AN ADIAN MANUFACTURER**  
AND INDUSTRIAL WORLD  
DEVOTED TO THE MANUFACTURING INTEREST OF THE DOMINION

Vol. 52.

TORONTO, FEBRUARY 16, 1906.

No. 4.

**B. & W. Patent WATER-TUBE BOILER**

Specially designed for the **RAPID, ECONOMICAL and SAFE** Generation of Steam up to the highest pressures.

Over **5,000,000 H.P.** in use.

If you are interested write for our book "Steam" mentioning this paper.

HEAD OFFICE FOR CANADA:  
**BABCOCK & WILCOX,**  
LIMITED  
NEW YORK LIFE BLDG., MONTREAL.  
BRANCH—114 King St. West, - TORONTO.

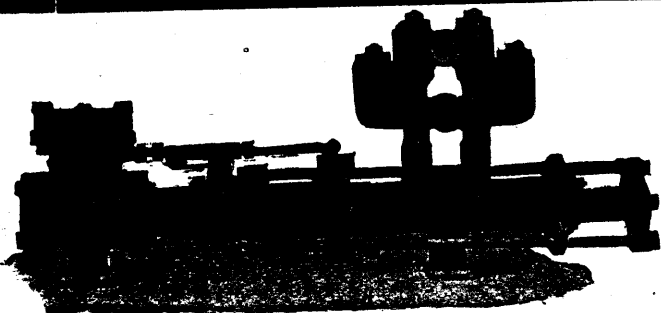
**"REDSTONE" HIGH PRESSURE SHEET PACKING**

**MAKES PERFECT JOINTS.**  
Does not blow out and requires no following up.  
Try a sample lot and be convinced of its merits.

MANUFACTURED SOLELY BY  
**The Gutta Percha & Rubber Mfg. Co.**  
of TORONTO, LIMITED  
Head Offices—47 Yonge Street,  
TORONTO, CANADA  
BRANCHES—Montreal, Winnipeg, Vancouver.

THE **Queen's Run Fire Brick**  
CO.

**HIGHEST GRADE SHAPES A SPECIALTY**  
**LOCK HAVEN, PENN.**



Steam and Power Pumps  
Centrifugal Pumps, Condensers,  
Travelling Cranes, Etc.

**THE SMART-TURNER MACHINE CO., Limited, - HAMILTON, CANADA**

**Dominion Oil Cloth Co.**

LIMITED  
Manufacturers of **Oilcloths** of Every Description.

Floor Oil-Cloth, Table Oil-Cloth,  
Carriage Oil-Cloth, Enamelled  
Oil-Cloth, Stair Oil-Cloth, etc.

OFFICE AND WORKS:  
Cor. St. Catherine and Parthenais Streets  
MONTREAL, Que.

**MAPLE LEAF**  
STITCHED COTTON DUCK  
**BELTING**  
DOMINION BELTING CO. LTD.  
HAMILTON CANADA

**"CARRON" PIG IRON**

Oldest and Best Scotch Make.

More Popular Than Ever.

**A. C. LESLIE & CO.,**  
MONTREAL

**The Classified Index**

Beginning on page 37 of this issue of *The Canadian Manufacturer* will save our readers money, and should be consulted by them before purchasing.

**PATENTS** Fetherstonhaugh & Co.  
Head Office—TORONTO Branch Offices (Montreal, Ottawa, Winnipeg, Vancouver and Washington.)

THE LONDON TRADING CO., LTD., MANUFACTURERS OF  
HAMILTON, ONT.  
Ceylon Plumbago SUPPLIES  
also Extra Fine Quality  
**READ CAPTAINS OF INDUSTRY ITEMS.**  
MOULDING SAND  
TYPE and Galle Scales  
WRITE FOR PRICES.