

Smith Wool-Stock Co.
 219 FRONT ST. E., TORONTO.
 Makers of
**WOOL STOCK,
 SHODDIES, Etc.**

LEITCH & TURNBULL, Canada Elevator Works,
 Queen and Peter Sts.
 HAMILTON, ONT. Patent Safety Hydraulic,
 Hand and Power ELEVATORS.
 Telephone Connection.

GEO. PATTINSON & CO.
 PRESTON, - ONTARIO.
 Manufacturers of

FINE AND MEDIUM **TWEEDS**

Guelph Woolen Mill Co.,
 QUELPH, ONT. LIMITED.
 Manufacturers of

Underwear, Hosiery, Wheeling,
 Fingering and Worsted Yarns,
 Eiderdown Flannel, Etc.

Selling Agents—Donald Fraser, Montreal.
 E. H. Walsh & Co., Toronto.

PENMAN MANUFACTURING CO.
 PARIS, ONT. LIMITED.
 Manufacturers of

Hosiery, Shirts, Drawers,
 Glove Linings and Yarns.

Selling Agents—D. Morrice, Sons & Co.,
 Montreal and Toronto

**ROSAMOND
 WOOLEN CO.**
 ALMONTE, ONT.,

Fine Tweeds, Cassimeres,
 and Fancy Worsted
 Suitings and Trouserings.

JOHN HALLAM
 TORONTO.

WHOLESALE DEALER IN
 DOMESTIC and FOREIGN **WOOLS**
 Sumac, Japonica, etc.

Reproductions Made for Eight
 Cents per Square Inch.



Half Tones Made Direct from
 Photos.

It Leads Them All.

THE OLDEST,
 THE LARGEST,
 THE SAFEST,
 THE CHEAPEST,

CANADIAN LIFE INSURANCE COMPANY IS

THE CANADA LIFE ASSURANCE COMPANY.

CAPITAL AND FUNDS OVER \$13,000,000.

Write for
 Prospectus.

A. G. RAMSAY,
 PRESIDENT.

GEO. A. & E. W. COX,
 Managers for Toronto
 and Eastern Ontario.

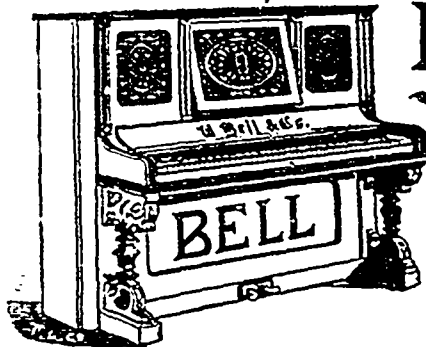
WOOL.

A. T. PATERSON & CO.,
 ...Merchants...

35 ST. FRANCOIS XAVIER STREET,

Represented by
MR. DAVID GUTHRIE.

MONTREAL.



BELL

HIGH-CLASS

INSTRUMENTS

USED AND RECOMMENDED
 BY

LEADING MUSICIANS.

Send for Catalogue.

THE BELL ORGAN AND PIANO CO.

(LIMITED)

QUELPH, - ONTARIO.



CROSBY STEAM GAGE AND VALVE CO.

Sole Proprietors and Manufacturers of
 Crosby Pop Safety Valves, for all kinds of Boilers, Water Relief Valves including
 the Underwriter, which is fully approved by the Associated Factory Mutual
 Insurance Companies; Crosby Steam Engine Indicators, with Sar
 gent's Electrical Attachment; Crosby Improved Steam
 Gages, Reading Gages and Patent Gage Testers.
 Or ginal Single Bell Chime Whistles.

BRANDEN PATENT PUMP VALVES

CLARK'S LINEN FIRE HOSE AND ADJUSTABLE COUPLINGS

All Kinds of Pressure and Vacuum Gages used in the Various Arts

Gold Medal Paris Exposition, 1889

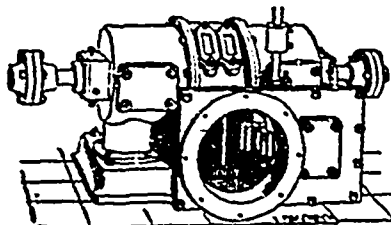
Ten Highest Awards Columbian Exposition, 1893

Main Office and Works.....

BOSTON, MASS, U.S.A.

Underwriter

Branch Offices at New York, Chicago, and London, Eng.



"LITTLE GIANT" TURBINE

....FOR ALL PURPOSES....

HORIZONTAL AND VERTICAL,
 BUILT IN 44 SIZES.

Horizontal Type.

We guarantee a higher percentage of power from
 water used than any other wheel on the market.

Water Wheel Governors, Machine Dressed Gearing, Pulleys, Shafting and Bearings.
 Catalogue and Gear List mailed on application. Correspondence Solicited.

J. C. WILSON & CO., - - GLENORA, ONT.

When writing to Advertisers kindly mention THE CANADIAN MANUFACTURER.