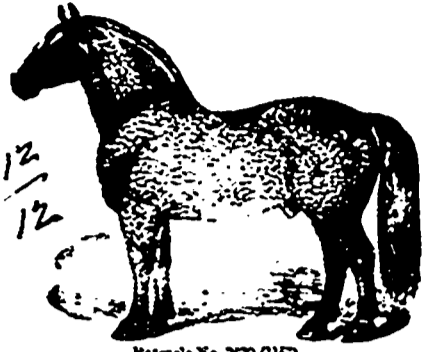


ISLAND HOME Stock Farm,
Grosse Ile, Wayne Co., Mich.
SAVAGE & FARNUM, PROPRIETORS.



Patrol No. 220 (117).
— IMPORTED —
Percheron Horses.
All stock selected from the best of sires and dams of established reputation and registered in the French and American stud books.

ISLAND HOME
Is beautifully situated at the head of Grosse Ile in the Detroit River, ten miles below the City, and is accessible by railroad and steamboat. Visitors not familiar with the location may call at city office, 52 Campus Building, and an expert will accompany them to the farm. Send for catalogue, free by mail. Address, Savage & Farnum, Detroit, Mich.

The Most Extensive Pure Bred Live Stock Establishment in the World.



Clydesdale Horses, Percheron-Norman Horses, English Draft Horses, Trotting-Bred Roadsters, Imported French Coachers, Cleveland Bays and Shetland Ponies, Holstein and Devon Cattle.

No better evidence is needed of the usual value of our stock than the fact that the BREEDERS OF all animals imported and sold by us during a career of ten years, every one, we believe, including all kinds and all breeds, is now alive and doing well, with the exception of only five. We feel safe in saying that no other establishment in America can approach such a showing for the length of time and the large number of animals. No careful and judicious person will fail to well consider this important fact in making his purchase. We invite critical inspection of our stock and careful comparison with that of any other establishment.

POWELL BROTHERS.
Springboro', Crawford Co., Pa.

MAPLE GROVE FARM,



S. SHUNK, Jr.,
EDGELEY P. O., ONT.
BREEDER OF THOROUGHBRED
HOLSTEIN CATTLE.

The herd consists of Four Imported Heifers and One Imported Bull. Lady Nell has dropped a Son & C. This Heifer took First Prize in Holland. Milk record 20 lbs per day. Heifer Jeanette dropped a C. This herd was imported by R. H. Ford & Son, Charlottesville, N. Y., with a view to secure only the best that could be got. Stock for sale, visitors welcome. For particulars, address as above.
2 Miles from Thornhill Station,
W. & N.-W. R. R.

TO REMOVE DANDY-SPOTS—Cleanse the scalp with Prof. Law's Hair Restorer Soap. A delightful medicated soap.

BURROW, STEWART & MILNE,
Imperial Standard
SCALE WORKS,

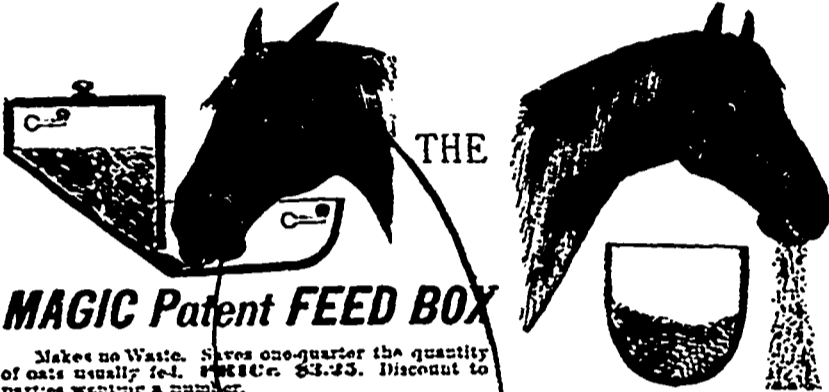


HAMILTON, ONT.
— 3/12
Stock Scales, Dairy Scales,
Hay Scales, Grocers' Scales,
Farmers' Scales Butchers' Scales,
Coal Scales, Steelyards, etc.

Wherever our Scales have been exhibited, they have been awarded First Prize, and have never once taken Second Place, and we claim that for accuracy and for quality and beauty of workmanship they are UNEQUALLED. Send for Illustrated Catalogue. Every Scale Inspected, Stamped and Fully Guaranteed.

THE MAGIC BOX.

THE OLD BOX.



MAGIC Patent FEED BOX

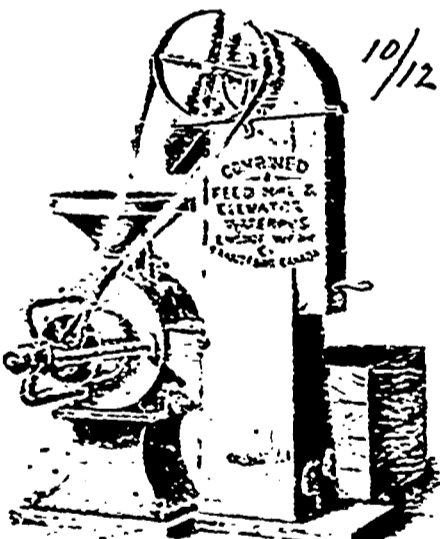
Makes no Waste. Saves one-quarter the quantity of oats usually fed. PRICE \$3.25. Discount to parties wanting a number.

SEND FOR DESCRIPTIVE CIRCULAR OF THE:

MAGIC PATENT FEED BOX

And Catalogue of our
IRON STABLE FITTINGS.
B. G. TISDALE, Brantford Stove Works,
BRANTFORD, ONTARIO.
We lead Canada in the manufacture of Iron Stable Fittings.

STANDARD Chopping Mills!



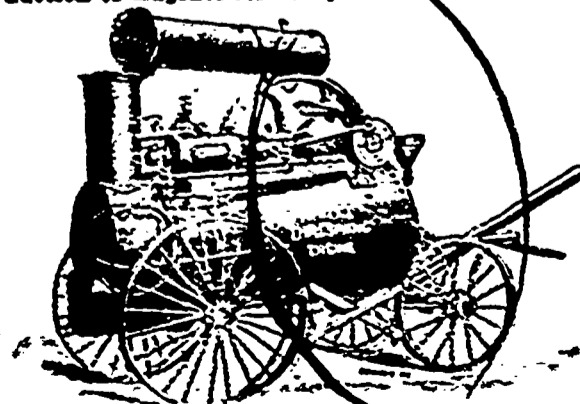
Using Best French Burr Stones.
SIZES MADE: 12 inch, 20 inch, 30 inch, 33 inch, 42 inch. All iron cases, wood frames. CAPACITY: 8 to 40 Bushels per hour, requiring 2 to 20 horse power. This cut shows 20 inch mill ready for work with Improved Elevator Attachment.

GRAIN is emptied from bags into hopper on the right elevator to mill hopper ground, discharged into second elevator, elevated and bagged, bag being hung from spout.
MAVEN TIME.
MAVEN MANUAL LABOUR
By its use one man can readily attend to mill.
Every Stack Reeler. Every Thresher. Every Mowmiller should have one. No trouble to keep in order. Stones will last a lifetime.

EASTERN OFFICE: MONTREAL.
161 St. James St.
BRANTFORD and WINNIPEG.

WATEROUS ENGINE WORKS Co.,

In consequence of the increasing demand for my ENGINES, I have added to my shops and machinery, and shall largely increase the production of Engines for 1895.

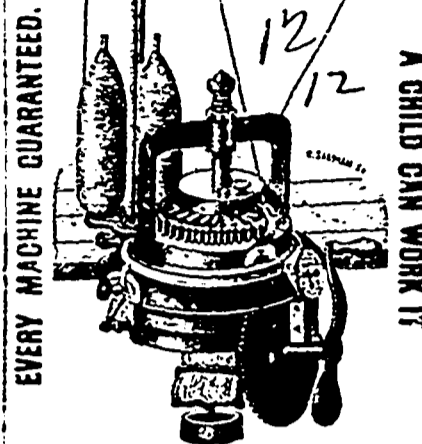


The engines may be seen at Van Tassel's foot-bridge waraboose, Belleville. As a proof of the popularity of my Threshing Engines, I may state that three or four other firms have commenced to imitate them, but sensible farmers will see that they get a genuine WHITE ENGINE.
I am now making a larger number than ever before for the coming season.

It is licensed by all Insurance Co's and has proved itself to be the most durable.
The engine for the North west is made to burn either coal, wood or straw.
Farmers procure a Genuine White Threshing Engine at the Forest City Machine works, London, Ont., Can.
GEORGE WHITE,
Proprietor and Manager.
H. R. WHITE, Supt. of Machinist Dept.
A. W. WHITE, Supt. of Erecting Dept.
HUB. J. WHITE, Secretary-Treasurer.
F. J. WHITE, Assistant-Secretary.

THE "ECLIPSE"
Is the only perfect family
KNITTING MACHINE

Simple! Rapid! Easily Worked!



EVERY MACHINE GUARANTEED.
A CHILD CAN WORK IT
An Eclipse Knitting Machine will pay in any family. After supplying the family requirements goods can be made for neighbours or the trade. A more profitable use of spare hours could hardly be found. A HOY can make CAN EASTERN MAKE \$1.20 TO \$2.00 a day on the "Eclipse." MERCHANTS can manufacture all the Hosiery, Scarfs, Mitts, Toggles, etc., required in their business, during dull season, and thus keep their clerks employed. FARMERS can manufacture their own yarn into various kinds of goods and realize 300 per cent. more on the wool they raise. The only perfect Knitting Machine is one that has a simple and reliable ribber. The ribber attachment of the "Eclipse" differs in almost every respect from others, and is pronounced perfect by competent judges. The "Eclipse" is the only Machine suitable for Family Use.
Toronto Knitting Machine Co.,
116 BAY STREET, TORONTO.

THE LINE SELECTED BY THE U. S. GOV'T TO CARRY THE FAST MAIL.



It is the only line with its own track from **CHICAGO TO DENVER,** Either by way of Omaha, Pacific Junction, St. Joseph, Atchison or Kansas City. It connects in Union Depots with through trains from NEW YORK, PHILADELPHIA, BOSTON and all Eastern points. It is the principal line to **SAN FRANCISCO, PORTLAND & CITY OF MEXICO** It traverses all of the six great States of ILLINOIS, IOWA, MISSOURI, NEBRASKA, KANSAS, COLORADO with branch lines to all their important cities and towns.
From CHICAGO, PEORIA or ST. LOUIS, it runs every day in the year from one to three elegantly equipped through trains over its own tracks between Chicago and Denver, Chicago and Omaha, Chicago and Council Bluffs, Chicago and St. Joseph, Chicago and Atchison, Chicago and Kansas City, Chicago and Topoka, Chicago and Cedar Rapids, Chicago and Sioux City, Peoria and Council Bluffs, Peoria and Kansas City, St. Louis and Omaha, St. Louis and St. Paul, Kansas City and Denver, Kansas City and St. Paul, Kansas City and Omaha.
For all points in Northwest, West and Southwest. Its equipment is complete and first class in every particular, and at all important points interlocking Switches and Signals are used, thus insuring comfort and safety.
For Tickets, Rates, General Information, etc., regarding the Burlington Route, call on any Ticket Agent in the United States or Canada, or address T. J. POTTER, 117 V.P. & Gen. Mgr., Chicago. HENRY B. STONE, Asst. Gen. Mgr., Chicago. PERCEVAL LOWELL, Gen. Pass. Agt., Chicago.

KNABE
PIANOFORTES.
UNEQUALLED IN
Tone, Touch, Workmanship and Durability.
WILLIAM KNABE & CO.,
Nos. 204 and 206 West Baltimore Street,
Baltimore. No. 118 Fifth Avenue, N. Y.