

### STRAWBERRY CROP PROSPECTS NEW BRUNSWICK

Due to the unusually late season the plants are not yet sufficiently advanced to allow of a report on the condition being made. In the Gagetown, Fredericton and Woodstock districts the bearing acreage will be approximately the same as last year. The cover has just been taken off but from all indications the plants have wintered well.

## ZAM-BUK

Nothing else known to science performs the same marvellous healing and dispels disease from the tissues as Zam-Buk does. This pure herbal balm takes the fire out of a wound or sore, kills and repels germs and grows fine new skin. Zam-Buk is acknowledged

**THE WORLD'S GREATEST HEALER**



Look to your eyes

### MR. BONAR LAW RESIGNS PREMIERSHIP

London, May 20—Andrew Bonar Law, the Prime Minister, sent his resignation to the King to-night because of ill health; he was unable to present it personally. This ends his brief but eventful administration and it ends with important and perplexing problems, particularly Great Britain's relations with France and Russia unsettled.

The King will summon one of the Conservative leaders to form a new Cabinet. It is generally accepted that Marquis Curzon will be the next Premier.

The crisis comes upon the government in the midst of the holiday when Parliament is dispersed and few members of the government are in London.

Two days ago, when the result of Mr. Bonar Law's consultation with physicians in Paris became known, this end was foreseen, but the country was not prepared for it and will await developments with anxiety and regret over the untimely dropping of a trusted pilot.

One consolation, it is generally conceded, Mr. Bonar Law will have, is that he has no enemies and that no one will withhold from him sympathy. He accepted his high office with reluctance; he leaves it amidst unfeigned regrets on the part of both supporters and opponents.

Mr. Bonar Law's resignation was taken to the King at Aldershot by Colonel Waterhouse, the Premier's private secretary, and Sir Frederick Sikes, his son-in-law, who motored

### FIVE YEARS' AGONY ENDED

When He Took "Fruit-a-lives" For Rheumatism

The Medicine Made From Fruit "Fruit-a-lives" is the long sought remedy for Rheumatism and Lumbago. From all over Canada come letters testifying to this fact.

Mr. John E. Guilderson of Parrsboro, N.S. writes: "I suffered badly with Rheumatism for five years—tried different medicines—was treated by doctors in Amherst—and here at home—but the Rheumatism came back."

"In 1916, I saw an advertisement for 'Fruit-a-lives' and took a box and got relief, so I took them for about six months and the Rheumatism was all gone and I have never felt it since." 50c. a box, 6 for \$2.50, trial size 25c. At dealers or from Fruit-a-lives Limited, Ottawa, Ont.

from London. They had a lengthy audience with the King, who appeared much moved by the news of the aggravated condition of Mr. Bonar Law's health.

### GERMAN FIRMS BUYING SHIPS

Purchase by German shipping firms of old steamships from countries has been going on at an amazing rate since January 1, a report to the American Bureau of Shipping from its Hamburg correspondent shows: In the first three months of 1923 more than twice as many ships were purchased as during 1922.

The period of increased activity in purchases coincided roughly with the French occupation of the Ruhr, but the report does not speculate on any possible connection.

During the first quarter of this year German firms bought thirty-two steamers of 98,850 gross tons, as compared with twelve of 44,568 tons during 1922. Building, however, did not show any commensurate gain. During the first quarter 29 steamers of 93,000 tons were turned out by German yards for German account, as compared with 116 of 478,732 tons during 1922.

The indicated addition to the German merchant marine this year through purchases and building is nearly 800,000 tons, or close to 60 per cent more than the additions last year. The country's fleet as of Jan. 1, was 1,967 vessels of 2,175,969 gross tons, as compared with 5,000,000 tons just before the war and about 500,000 tons just after the reparations deliveries. At the present rate the fleet will be entirely restored within three years.

The returns show that the Germans are building mainly medium sized freighters with a few passenger vessels of moderate tonnage. The largest turned out during the first quarter of 1923 was the Westphalia of 11,342 gross tons, bought by the North German Lloyd, its former owner, from the Shipping Board. Two Shipping Board freighters are also on the list. British marine publications make it plain that the boggy most feared is that of German, rather than American or any other sort of competition. Receiving freight and passenger monies in gold and paying his crews and other expenses in marks, the German ship operator is in a particularly favorable position.

### CANADIAN RAILWAY TO RUSH PRINT PAPER TO NEW YORK

Montreal, May 19—A fast freight service for hauling newsprint from mills near Montreal to publishers in New York City will be started on June 1, the Canadian National Railway announced to-day.

The service, it was said, would enable New York newspapers to run the paper from their presses within three days of the time it leaves the mills at Shawinigan Falls and Grand Mere.

### MORE N.B. FARMS ARE ABANDONED

A falling off in the number of occupied farms in the province of New Brunswick is shown by the census of agriculture which was taken in connection with the census of population in June, 1921. The number of occupied farms in 1921 was 36,655 as compared with 37,755 in 1911, and 37,006 in 1901. Farm acreage in 1921 was 4,269,560 as against 4,537,999 acres in 1911 and 4,443,400 acres in 1901. The average size of farms in 1921 was 116.4 acres as compared with 120.2 acres in 1911 and 120.1 acres in 1901.

Although there was a decrease in the number of acreage of occupied farms in New Brunswick, statistics show a marked increase in the value of farm property in 1921 as compared with 1911. The value of farm property in 1921 was \$131,825,675 as compared with \$84,895,906 in 1911, or an increase of 55.3 per cent. But in considering this increase the large difference between the price levels of 1911 and 1921 must be kept in mind, states the bulletin of the census bureau.

### STANLEY BALDWIN NEW PREMIER

Stanley Baldwin, Chancellor of the Exchequer in the old Bonar Law Ministry has been made premier of Britain. Baldwin was summoned to Buckingham Palace by King George and after a conference with King George it was announced that he had accepted the invitation of the King to form a new government. The announcement was made at 4:30 p.m. The selection of Baldwin was made after the King had indirectly communicated with leaders of the Conservative party of which Baldwin is a member.

### Serious Fire Averted In Miramichi Mill

A blaze was discovered early on Tuesday morning above one of the boilers in the fire house of the Miramichi Lumber Co's roasting mill. Owing to two alarms being rung in the firemen experienced delay in getting to the fire and the blaze had gained headway. After an hour's work it was finally extinguished. Fortunately there was little wind or the fire might have taken more serious proportions.

## Ask this question

When you are urged to buy another baking powder because it costs less than Royal, ask—"Is it made from Cream of Tartar?"

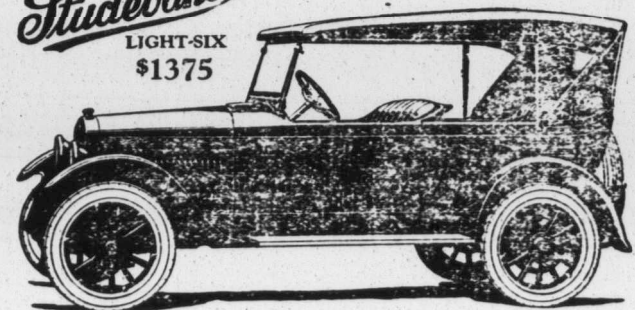
## ROYAL Baking Powder

Made from Cream of Tartar derived from grapes

Contains No Alum—Leaves No Bitter Taste

MADE IN CANADA

Built in Canada  
**Studebaker**  
LIGHT-SIX  
\$1375



### A SAFE CAR TO BUY Backed by \$82,000,000 of resources

There is no element of chance in the purchase of a Studebaker Light-Six. Its satisfaction is backed by a concern with \$82,000,000 of resources and a seventy-one year old reputation for high quality and fair dealing.

Since the Light-Six was introduced, more than 100,000 have been sold. From the beginning, its remarkable performance, sturdy construction and unusual economy have been widely recognized. But today the Light-Six represents an even finer motor car than at its inception, for it bears the improvements that Studebaker's large engineering staff has been ever alert to adopt with a view toward making a good product better.

Studebaker's leadership in six-cylinder sales is further assurance of merit. Sales in 1922 totaled 110,249 cars valued at more than \$130,000,000. One buyer may make a mistake in the selection of a motor car, but not one hundred and ten thousand!

In fairness to yourself, you should see the Studebaker Light-Six before you buy any car.

MODELS AND PRICES—i. o. s. Walkerville, Ont.—Exclusive of Taxes			
LIGHT-SIX 5-Pass. 117 W. B. 40 H. P.	SPECIAL-SIX 5-Pass. 119 W. B. 50 H. P.	7-Pass. 124 W. B. 40 H. P.	810-SIX 5-Pass. 124 W. B. 40 H. P.
Touring.....\$1375	Touring.....\$1795	Touring.....\$2435	Speedster (5-Pass.) 2550
Roadster (3-Pass.) 1375	Roadster (3-Pass.) 1750	Coupe (4-Pass.) 3250	Coupe (5-Pass.) 3475
Coupe-Roadster (3-Pass.) 1775	Coupe (4-Pass.) 2750	Sedan (5-Pass.) 3750	
Sedan.....2225	Sedan.....2950		

The Lounsbury Co., Ltd.  
Newcastle Chatham Daokt. wv

THIS IS A STUDEBAKER YEAR

## BEAVER FLOUR

MAKES BETTER BAKINGS

THE reason why BEAVER FLOUR makes such light, flaky pastry, and such excellent bread, is—it is a blended Flour.

BEAVER FLOUR is a combination of the world-famed Ontario Winter Wheat scientifically blended with enough Western Hard Wheat to give it strength—the resulting product is flour unsurpassed for high quality and richness of flavor.

Try BEAVER FLOUR and note the marked improvement in your bakings.

Sold at your grocer's.

The T. H. TAYLOR CO.  
Limited,  
CHATHAM, ONT.

### EASTERN STEAMSHIP LINES, Inc

INTERNATIONAL LINE  
Resumption of Freight and Passenger Service between St. John and Boston effective May 22nd.

S. S. GOVERNOR DINGLEY will leave St. John every Wednesday at 8 a. m. and every Saturday at 6 p. m. (Atlantic Time) for Boston. Wednesday trips are via Eastport and Lubec, due Boston about 11 a. m. Thur. Saturday trips are to Boston direct, due Sundays about 2 p. m. RETURN—Leave Boston Mondays and Fridays at 10 a. m. (Daylight Saving Time) for Eastport, Lubec and St. John.

FARE \$10.00 STATEROOMS \$3.00

At Boston connection is made via the Metropolitan Line express freight and passenger steamers for New York and points South and West. For staterooms, rates and additional information, apply to A. C. CURRIE, Agent ST. JOHN, N. B.

### PROTECT YOUR VALUABLES

If kept in your home, fire or thieves may rob you of them.

Our Managers will be pleased to tell you about the protection afforded by a SAFETY DEPOSIT BOX.

THE ROYAL BANK OF CANADA



### Made From The Mildest Cleansers

Palmolive contains Palm and Olive oils. These oils were the cosmetic cleansers used by Cleopatra and kept her skin fresh, smooth and youthful.

Today their scientific combination in Palmolive produces the most perfect of all facial cleansers. Science has discovered nothing finer, milder or more beneficial for the toilet than Palm and Olive oils.

Artful applications of rouge and powder may lend your skin the appearance of smooth freshness. But unless you cleanse the pores thoroughly every day with soap and water, blackheads, pimples and other blemishes are sure to result.

Some persons imagine that soap is too harsh for the face. They should try Palmolive. Its mild, smooth, creamy lather, when massaged into the skin, cleanses without the slightest irritation.

You can buy Palmolive Soap at all first-class dealers.

Made in Canada

Palm and olive oils—nothing else—give nature's green color to Palmolive Soap.



Volume and Efficiency Produce 25-cent Quality for 10c