

**CHURCH DAY SCHOOL**  
Major Street, Toronto  
**SISTERS S. JOHN THE DIVINE**  
KINDERGARTEN and  
ELEMENTARY DEPARTMENT

**Bishop Bethune**  
College, Oshawa, Ontario

UNDER THE CHARGE OF  
The Sisters of St. John the Divine  
Visitor, the Lord Bishop of Toronto.  
Preparation for the University.

For terms and particulars apply to the  
SISTER IN CHARGE, or to  
The Sisters of St. John the Divine  
MAJOR STREET, TORONTO

**Trinity College School**  
PORT HOPE, Ont.

FOUNDED 1865.  
RESIDENTIAL SCHOOL FOR BOYS  
Visitor—The Lord Bishop of Toronto.

For Calendar and all particulars apply to  
REV. OSWALD RIGBY, M.A., LL.D.,  
Head Master.

**A Telegraph Operator**

has pleasant work, gets good wages and rises to the highest positions. We teach it thoroughly and quickly, also railroad rules, signals, etc., and start our Graduates in telegraph service. Our school is recommended by telegraph operators and railroad officials. Write for terms and prospectus.

**CANADIAN SCHOOL OF TELEGRAPHY**  
Cor. Queen and Yonge Streets, Toronto.

**NEW TERM OPENED**  
January 4th, at the

**BRITISH AMERICAN College**  
Business College

227 Y.M.C.A. BLDG., TORONTO  
Thousands of students attend our classes, day and evening, and are placed by us in good positions. All subjects carefully taught by expert teachers. Particulars free.  
W. BROOKS, Principal

**ST. ALBAN'S CATHEDRAL SCHOOL**  
Toronto—Incorporated

For BOARDERS and DAY Boys.  
Chairman—His Lordship the Bishop.  
A thoroughly qualified staff. For prospectus address  
M. E. MATTHEWS, Principal

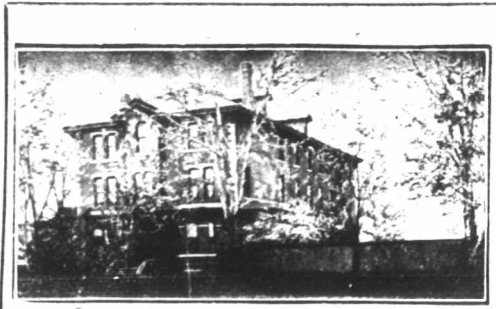
**CHURCH BRASS WORK**

Eagle and Rail Lecterns, Altar Vases, Ewers, Candlesticks, Altar Desks, Crosses, Vesper Lights, Altar Rails, Etc. Chandeliers and Gas Fixtures.  
**CHADWICK BROTHERS**  
(Successors to J. A. Chadwick).  
MANUFACTURERS  
182 to 190 King William St. HAMILTON, Ont.

**COWAN'S** Healthful and Nutritious  
**Hygienic Cocoa...**  
Sold in 4 lb., 1 lb., and 1 lb. Tins only  
Absolutely Pure

FAVORABLY KNOWN SINCE 1826. BELLS  
HAVE FURNISHED 25,000  
CHURCH SCHOOLS & OTHER  
**MENEELY & CO.** PUREST BEST  
WEST-TROY, N.Y. GENUINE BELL-METAL  
CHIMES. ETC. CATALOGUE & PRICES FREE

**Church Brass Work**  
MEMORIAL BRASSES  
RAILS, VASES.  
**PRITCHARD ANDREWS**  
CO. OF OTTAWA, LIMITED  
133 Sparks St. OTTAWA



**"Glen Matur"**  
RESIDENTIAL AND DAY SCHOOL  
FOR GIRLS  
651 Spadina Avenue, Toronto.  
Thorough English Course. Individual Attention. Pupils prepared for the Universities and for Examinations in Music and Art. Large staff of Resident and Visiting Teachers.  
**MISS VEALS,**  
LADY PRINCIPAL

**WESTBOURNE School for Girls**

340 Bloor Street W., TORONTO, Can.  
Re-opens September 10th, 1903.

A Residential and Day School, well appointed, well managed and convenient. Specialists in each department. Affiliated with the Toronto Conservatory of Music. Dr. Edward Fisher, Musical Director; F. McGillivray Knowles, R.C.A., Art Director. For announcement and information, address the principals.  
**MISS M. CURLETTE, B.A.**  
**MISS F. E. DALLAS, Mus. Bach**

**ST. MONICA'S**  
Residential and Day School for Girls.

170 Bloor St. W., - - Toronto  
Re-opens Thursday, Sept. 10th.  
Thorough course in English, Languages, Music, Art, Education and Domestic Science, and Physical Culture. Prepares for University and Departmental Examinations.  
Kindergarten and Primary Departments. Teachers, Specialists in each Department. A Home School. Extensive Grounds.  
For Prospectus apply to  
**MISS PHILLPOTTS,**  
LADY PRINCIPAL.

**Edgehill, Church School for Girls**  
WINDSOR, NOVA SCOTIA  
INCORPORATED 1891.

The Bishop of Nova Scotia, Chairman Board of Trustees. The Bishop of Fredericton, member of Board of Trustees, ex-officio.  
Miss Lefroy, of Cheltenham Ladies College, England, Principal, assisted by Eleven Resident Experienced Governesses from England (five of whom are specialists in the Music and Art Departments), and one non-resident Instructor, Housekeeper, Matron and Nurse.  
Extensive buildings with capacity for 100 Residents. Heated by Hot Water. Lighted by Electricity. Grounds covering eight acres, with Lawns for Tennis, Croquet, Basket Ball, Hockey, &c. School Dairy and Laundry.  
LENT TERM begins on Wednesday, January 13th, 1904.  
For Calendar apply to **DR. HIND.**

**Church - Extension Association**

106 Beverley Street, Toronto  
School of the Sisters of the Church.  
Supplies made to order from \$1.00 up  
Orders taken for all kinds of Church Need'ework  
Also Books and Publications.  
Apply Sister in Charge

**CHURCH WINDOWS, FURNITURE.**

R. G. GEISSLER, Marble and Metal Work  
56 West 8th St. (near 6th Ave.), New York.

**LUXFER ELECTRO-GLAZED**

**Church Window Decorative Glass.**  
WRITE FOR PRICES.

**Luxfer Prism Company, Limited.**  
100 King Street West, Toronto.

**HARRINGTON'S TUBULAR Chime Bells**  
Lighter in Weight  
Sweeter in Tone  
Cheaper in Price  
Than the ordinary bell  
COVENTRY, ENG.  
**CASTLE & SON**  
20 University St.,  
Montreal Agents



**ST ACNES' SCHOOL.**  
A Church School for Girls,  
ELMPOOL, BELLEVILLE.  
Patron—The Lord Bishop of Ontario  
Prepares for Matriculation. Conservatory of Music Examinations held at the School. Courses in Art, Physical Culture, Domestic Science. Beautiful building with all modern improvements. Extensive grounds. TERMS MODERATE. For prospectus apply to  
**MISS F. E. CARROLL.**

**HIGHER EDUCATION FOR GIRLS**

**The Bishop Strachan School**  
(Thirty-seventh Year)  
For Calendar apply to **MISS ACRES, Lady Principal, Wykeham Hall, Toronto.**

**The Parkdale Church School**  
FOR GIRLS—151 Dunn Ave.  
KINDERGARTEN—FOR BOYS and GIRLS  
For Calendar apply to  
**MISS MIDDLETON, Lady Principal.**

**MEMORIAL WINDOWS**

Our productions are extensively adopted.  
**Robert McCausland, Limited**  
86 Wellington St. West, TORONTO

**The "Solar" Generator**

is the machine that makes Acetylene Gas perfect. It is easily and cheaply installed and unrivalled for Country Churches, Houses, Etc. Write us for Booklet. Agents wanted.

**Toronto Acetylene Co.**  
KEITH & FITZSIMONS, AGENTS,  
111 King Street West, Toronto

**STAINED GLASS**

MEMORIAL :::  
::: WINDOWS  
BRASSES AND DECORATIONS  
**Castle & Son**  
20 UNIVERSITY ST., MONTREAL

**MEMORIALS AND DOMESTIC ART GLASS**  
DOMINION STAINED GLASS  
ESTD. CO. 1881  
34 RICHMOND ST. E., TORONTO.  
—FRANK & Pearl Front.

**JONES AND WILLIS**

Church Furniture Manufacturers  
**Metal, Wood, Stone and Textile Fabrics.**  
STAINED GLASS ARTISTS  
44 Great Russell Street, LONDON, ENG  
Opposite British Museum.  
Also at Birmingham and Liverpool



THE CANADIAN NORTH-WEST  
**HOMESTEAD REGULATIONS.**

Any even numbered section of Dominion Lands in Manitoba or the North-West Territories, excepting 8 and 26, which has not been homesteaded, or reserved to provide wood lots for settlers, or for other purposes, may be homesteaded upon by any person who is the sole head of a family, or any male over 18 years of age, to the extent of one quarter section, of 160 acres, more or less.

**ENTRY.**  
Entry may be made personally at the local land office for the district in which the land to be taken is situate, or if the homesteader desires, he may, on application to the Minister of the Interior, Ottawa, the Commissioner of Immigration, Winnipeg, or the local agent for the district in which the land is situate, receive authority for some one to make entry for him. A fee of \$10.00 is charged for a homestead entry.

**HOMESTEAD DUTIES.**  
A settler who has been granted an entry for a homestead is required by the provisions of the Dominion Lands Act and the amendments thereto to perform the conditions connected therewith, under one of the following plans—  
(1) At least six months' residence upon and cultivation of the land in each year during the term of three years.

(2) If the father (or mother, if the father is deceased) of any person who is eligible to make a homestead entry under the provisions of this Act, resides upon a farm in the vicinity of the land entered for by such person as a homestead, the requirements of this Act as to residence prior to obtaining patent may be satisfied by such person residing with the father or mother.

(3) If a settler has obtained a patent for his homestead, or a certificate for the issue of such patent, countersigned in the manner prescribed by this Act and has obtained entry for a second homestead, the requirements of this Act as to residence prior to obtaining patent may be satisfied by residence upon the first homestead, if the second homestead is in the vicinity of the first homestead.

(4) If the settler has his permanent residence upon farming land owned by him in the vicinity of his homestead, the requirements of this Act as to residence may be satisfied by residence upon the said land.

The term "vicinity" used above is meant to indicate the same township or an adjoining or cornering township.

A settler who avails himself of the provisions of Clauses (2), (3) or (4) must cultivate 30 acres of his homestead, or substitute 20 head of stock, with buildings for their accommodation, and have besides 80 acres substantially fenced.

Every homesteader who fails to comply with the requirements of the homestead law is liable to have his entry cancelled, and the land may be again thrown open for entry.

**APPLICATION FOR PATENT.**  
Should be made at the end of the three years, before the Local Agent, Sub-Agent, or the Homestead Inspector. Before making application for patent, the settler must give six months' notice in writing to the Commissioner of Dominion Lands, at Ottawa, of his intention to do so.

**INFORMATION.**  
Newly arrived immigrants will receive at the Immigration Office in Winnipeg or at any Dominion Lands Office in Manitoba or the North-West Territories, information as to the lands that are open for entry, and from the officers in charge, free of expense, advice and assistance in securing land to suit them. Full information respecting the land, timber, coal and mineral laws, as well as respecting Dominion Lands in the Railway Belt in British Columbia, may be obtained upon application to the Secretary of the Department of the Interior, Ottawa, the Commissioner of Immigration, Winnipeg, Manitoba, or to any of the Dominion Land Agents in Manitoba or the North-West Territories.

**JAMES A. SMART,**  
Deputy Minister of the Interior.  
N.B.—In addition to Free Grant Lands to which the regulations above stated refer, thousands of acres of most desirable lands are available for lease or purchase from railroad and other corporations and private firms in Western Canada.

**J. YOUNG**  
THE LEADING Undertaker and  
359 YONGE ST. Embalmer  
Telephone 679

Vol. BER 348 WANTI Halifax, Canon C WANTI Write pa A. L. Mu DEACO the organ Colony Must be George H Chu of 1 Y CH IN PI T trait of of des var Ch list giv 77 A "C 111 sele ish- It s the 313. A. C1 St. Direct Wines Genui J. G. In is T