

volved installing new equipment, some of which was manufactured in their own plant and some was purchased. Purchases, as far as possible, were made in Canada.

Link-Belt, Limited, Toronto, built the first unit of their present plant in 1927, this being a shop used for the manufacture of chain. In the year 1928-29 a machine shop was added. Since the latter was built they have bought new equipment and made replacements of tools running into an amount of \$200,000.

The Miner Rubber Company Limited, Granby, Que. while they have not extended their plant during the past ten years, have replaced equipment with more modern and efficient machinery.

Richardson Road Machinery Co. Limited, Saskatoon, Sask., have built a complete new plant during the period under review, as their former plant was completely destroyed by fire. They have added considerable machine shop equipment in the way of lathes, drills, milling machines, etc., and have more than doubled their plant equipment in the ten-year period.

The Newell Mfg. Co., Limited, Prescott, Ont., report the following extensions during the past ten years,—new concrete room for enamelling, 44 x 29 feet in size, with the most modern equipment; new raw material and scrap storage buildings; purchase of buildings adjoining fac-

tory for sheet metal storage, metal varnishing and oven equipment; new floors added to main building doubling floor space for finished stock warehouse. These additions give company a modern factory with close on to 40,000 sq. feet of floor area. Equipment is constantly being changed and brought up-to-date for the manufacture of new products and the improvement of their original product, curtain rods, now made in a very wide range and variety.

Page-Hersey Tubes, Limited, Toronto, appropriated during the year 1932 the sum of \$2,000,000 for the purpose of equipping and operating a weldless tubular steel plant at Wexford, Ont. Prior to that time no weldless or seamless pipe had been manufactured in Canada. This would include standard and extra heavy seamless pipe, boiler tubes and mechanical tubing. This plant produces hot rolled products only but has since been supplemented by a cold drawing mechanism, which will enable them to furnish a different range of mechanical tubing, such as that employed by aeroplane, motor car and implement manufacturers.

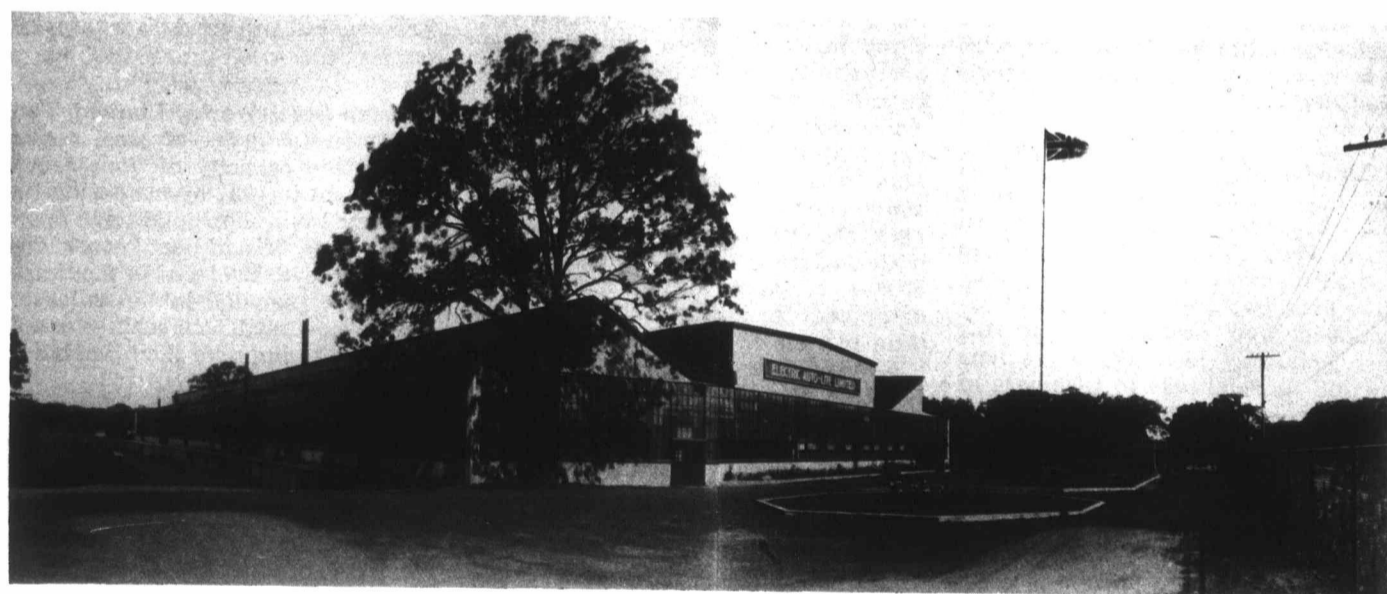
Rubberset Company Limited, of Gravenhurst, manufacturers of paint and shaving brushes, about 1927 found it impractical to continue in the leased factory premises in Toronto in which they were manufacturing their product and decided to enlarge the plant which they owned at Gravenhurst. This had been acquired in 1920 for the manufacture

of the wood parts used in their brushes. Accordingly during the years 1926-28 they made alterations and extensions at Gravenhurst, involving the expenditure of over \$57,000 in materials and labour, most of which was of Canadian origin. Since then they have made further extensions and alterations, including machinery additions, costing over \$50,000.

Richards-Wilcox Canadian Company, Limited, London, have largely rebuilt their plant during the past ten years, permanent construction taking the place of several temporary structures erected hurriedly during the war. Present equipment is about double that of 1924 and a comparison of catalogues of 1924 and 1934 shows very extensive development in the variety and quality of products.

Roden Bros. Limited, Toronto, manufacturers of silverware, report the following developments during the past ten years,—enlargement of stock room by 50 per cent; installation of many new drops and presses for large type work; installation of large ten ton drop hammer for making large 24-inch salvers; installation of new degreasing machine for improvement of cleaning work in progress.

Standard Clay Products, Limited, St. Johns, Que., in 1928 built a complete new unit for the manufacture of centrifugally cast concrete pipes under the Hume patents. In this plant all sizes of concrete sewer pipes and concrete culvert pipes are made in sizes from 4-inch to 78 inches di-

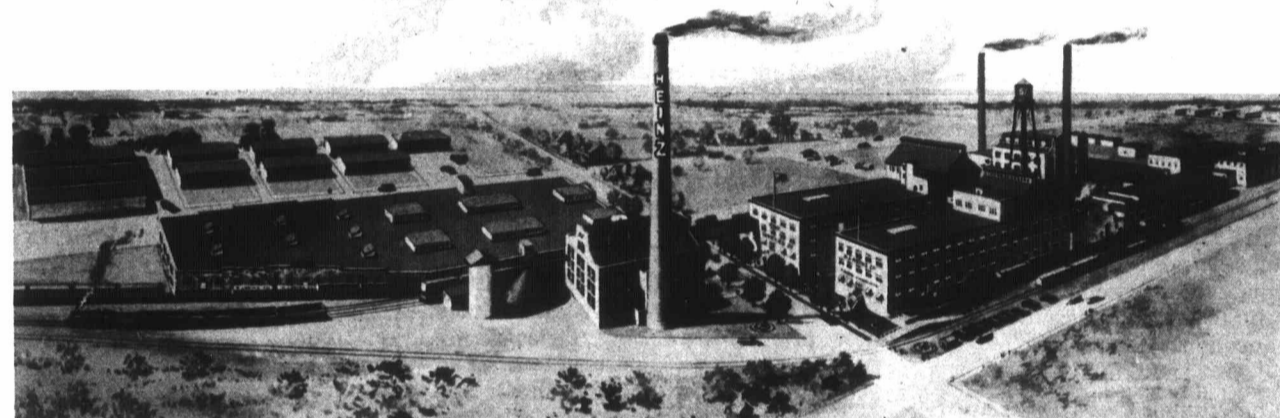


New Sarnia Industry Gives Employment to 300.
Factory of Electric Auto-Lite Limited, erected in 1929 and opened in May, 1930. It has 52,000 sq. ft. of floor space, all on one floor, and peak employment so far has been 300, with prospects of 500 shortly. New offices have just been erected, adding 4,000 sq. ft. of space and further expansion is contemplated. A variety of products is manufactured in order to spread employment throughout the year.

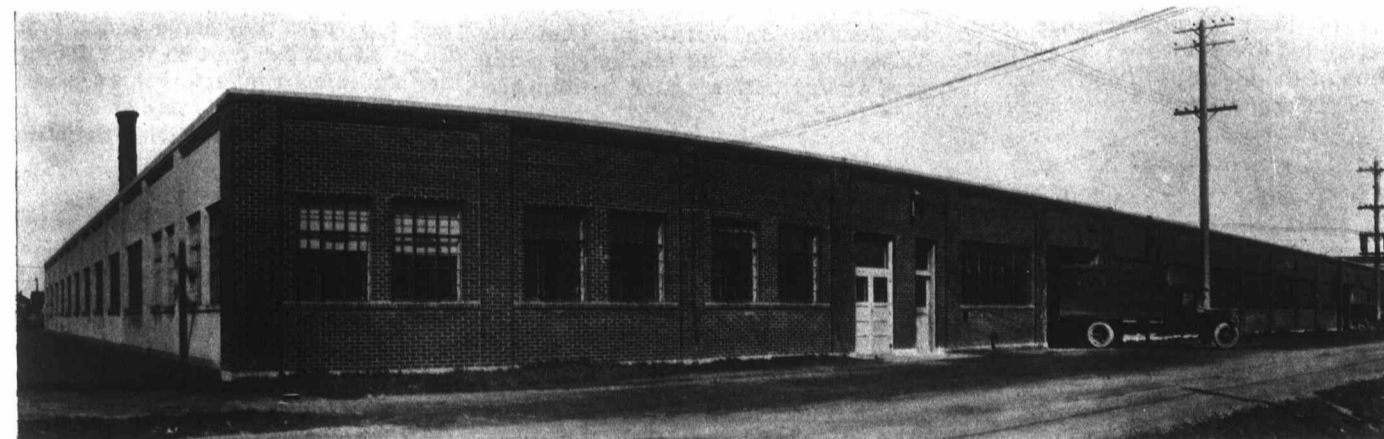
Canada's Industrial Expansion Illustrated



A Carpet Manufacturing Industry Developed at Brantford.
This industry started operations in January, 1928. It normally gives employment to about 125 people. There are five modern buildings, with about 100,000 sq. ft. of floor space. This industry has the distinction of having been the first to make the seamless Axminster rug in Canada, a line that is now manufactured extensively by other companies as well.



Greatly Enlarged During the Past Year.
Plant of H. J. Heinz Co. at Leamington, Ont., established in 1909. Since this drawing was made several important additions have been erected and two new buildings added. Additions made in the past year have been larger and more important than those completed in the preceding decade, including a vinegar plant and a building that enlarges kitchen, filling and raw products receiving facilities. The payroll in 1934 of this industry established a new high record.



One of Winnipeg's Newer Industries Makes Progress.
Plant on Wall Street of Hilton Bros. Limited, who are engaged in the manufacture of corrugated and solid fibre board shipping containers, etc. It was erected in 1926 and enlarged in 1927 to 194 x 275 feet. About 40 hands are employed.