

PREMATURE MENSTRUATION.—E. Seuvre (*Union Med. du Nord-Est*) records the case of a girl, aged four years and nine months, who had a sero-sanguinolent vaginal discharge, well-marked mammae (like those of a girl of fifteen or sixteen years), enlarged labia majora covered with scanty hairs and a broad pelvis. About a year previously the broadening of the pelvis and the mammary enlargement had been noted, and the child had become graver and more affectionate. There was no history of premature sexual development.

SANMETTO IN DIABETES MELLITUS.—R. A. Miller, M.D., of Atchison, Kansas, writing, says: "I used Sanmetto in a severe case of diabetes mellitus in a gentleman fifty-four years of age, in which there was an excessive flow of urine, patient having

to arise some four or five times during the night; severe irritation at neck of bladder and enlargement of the prostate gland; dry, hot skin with considerable emaciation. After using Sanmetto for three or four days the trouble was greatly improved, patient not having to arise more than once during the night, and has since, by the use of one more bottle of Sanmetto, almost recovered. I think Sanmetto a most excellent remedy."

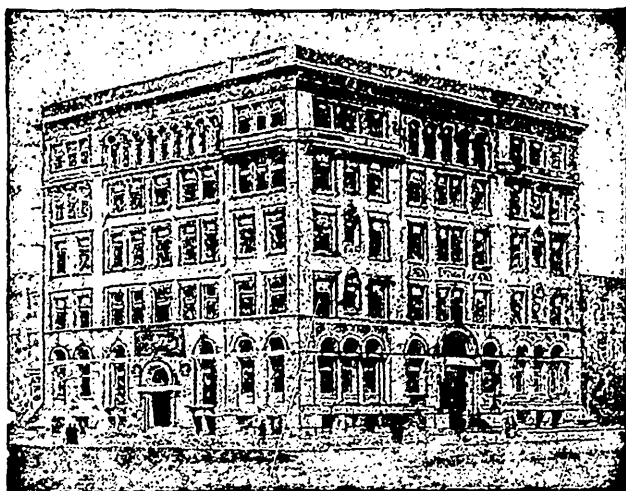
FOR MENTAL DEPRESSION IN PELVIC DISEASE—

R. Strychn. sulph. ¼ gr.
Quinin. sulph. 1½ gr.
Ext. hyoscyamus 1½ gr.
Ferri redactum gr. j.

M. For one pill. Dose, one pill thrice daily.—*Dr. Talley.*

New York Post-Graduate Medical School and Hospital

FIFTEENTH YEAR—SESSIONS OF 1896-97.



The Post-Graduate Medical School and Hospital is now permanently located in its new building, which has been erected to fill all the modern requirements for a hospital and medical school. It is an eight-story fire-proof structure, containing accommodations for 175 patients. The balance wards, formerly in the adjacent building, are now an integral part of the institution under its new roof. The classes in the school have been so large in the last few years, and facilities for attending them so cramped, that this building has been erected, not only for the classes of practitioners, but also that more patients might be received, in order to form a great teaching hospital. This has now been accomplished, and every opportunity, both in the dispensary and hospital is afforded in all departments of medicine and surgery. The great major operations are performed in the amphitheatre of the institution, which is fitted up in the very best manner to secure best surgical results. Pathological and Histological Laboratories are also a part of the school. The Faculty are also connected with most of the great hospitals and dispensaries in the city, where other clinics are held for the benefit of the matriculates of the Post-Graduate Medical School. Practitioners may enter at any time.

Members of the profession who are visiting New York for a day or two, will be heartily welcomed at the Post-Graduate School, and if they desire to attend the clinics, a visitors' ticket good for two days will be furnished them on application to the Superintendent.

D. B. ST. JOHN ROOSA, M.D., LL.D., President,

CHARLES B. KELSEY, M.D., Secretary of the Faculty.

ALEXANDER H. CANDLISH, Superintendent.

Cor. Second Ave. & 20th Street, New York City

Physicians coming to the School will please ask for the Superintendent.