

TORY

LIVERY STABLE

M. BUCKLEY,

and Livery Stable.
Coburg Street,
Phone M. 1367.JOHN CLYNN,
Chauffeur, St. M-1254
attendance at all boats
and trains.DAVID LOVE,
Sleigh to Hire.
Main St. Phone 1412.FOR SALE,
of Ontario Horses, from
1,000-1,500 lbs.
NELLY'S STABLE,
10 Coburg St.MAS A. SHORT,
and Livery Stable.
Opposite Union Depot
Phone M. 2069.

AND WARE.

ARRY SUPPLY CO.,
dealers, Wall Paper,
then Utensils, Mill and
Supplies.
38 Dock St.
Phone M. 977.

HOTELS.

DOWNIE HOUSE,
11th and King squares,
for Imperial Theatre.
Rate \$2.00 per Day.
JON & KING, Proprietors.VICTORIA HOTEL,
later Now Than Ever.
NG ST., St. John, N. B.
JOHN HOTEL CO., LTD.
Proprietors.
A. PHILLIPS, Manager.

INSURANCE.

M. QUEEN,
Manager, Canada Life
Assurance Co.
Guarantee and Accident
good tariff fire companies.
Wm. St. Phone M-3074.

JEWELLERS.

& CO., King Sq.
of Jewelry and Watches
Repair Work. Phone M 2695-11

LAUNDRIES.

WET WASH,
dried for and delivered same
toest up-to-date plant
in the city.VICTORIA LAUNDRY,
1st Street. Phone M-390.

MERCHANDISE.

S. EAGLES & CO.,
moved their office to the Can-
bank or Commerce building.

NILLA CORDAGE

ized and Black Steel Wire
kum, Pitch, Tar, Oils, Paints,
Bottle Blocks, and Motor Busesney Ranges and Stoves
and Tinware.

S. SPLANE & CO.

19 Water St.

RVOUS DISEASES.

RT WILBY, Medical Electric
list and Masseuse. Treats all
diseases, weakness and wa-
rathenia, locomotor ataxia,
scietica, rheumatism, etc.
removes all kinds remov-
King Square.

OFICIANS.

GOLDFEATHER,
625 Main St.uplicate Broken Lenses
without Prescription.
price are free promptly.

TS AND VARNISHES.

will soon be here. Get ready
brighten up the home.

We Carry Full Lines.

ROWAN, 331 Main St.

Phone M. 398.

PLUMBERS.

M. E. EMERSON,
Plumberd General Hardware,
nion Street, West St. John.

Phone W. 175.

OVES AND RANGES.

BING AND TINSMITHING.

PHILIP GRANNAN,
8 Main St. Phone M. 365.

OLESALE LIQUORS.

JAM L. WILLIAMS SUCCESSORS
A. Finn, Wholesale and Retail
and Spirit Merchants, 119 and
since William St. Established
Write for family price list

OLESALE FRUITS,

A. L. GOODWIN,
36-38 Germain St.,
St. John, N. B.

FRENCH AND BRITISH AGAIN MAKE DRIVE

The French made further progress last night in the great battle along the Aisne and in the Champagne. This is notably true of the region northeast of Soissons, where the lines of envelopment are gradually being drawn nearer to the important railway centre of Laon, the strategic objective in this division of the front.

Important Advance.

The French have gained ground in the vicinity of Laffaux, the advance being characterized in the official statement as "considerable." The Germans reacted strongly on this front but were unable to make any impression on the new French lines.

General Nivelle's pressure here is calculated to force the Germans speedily out of the salient to which they have clung, projecting toward the Aisne in the direction of Conde.

The advance towards Laon also was continued on Valenciennes Plateau, almost directly south of that city, where the French are pushing northwest of the Rhinets-Laon Road. On the plains north of Rheims, where the Germans are clinging stubbornly to their strong-entrenched positions, several of their trenches near Courcy were car-

ried in grenade attacks. Headway also was made east of Lorraine in this sector.

In the Champagne, notably near Moronvilliers, the Germans launched their expected counterattacks, which the French troops, their artillery brought up, were amply prepared to meet. The artillery and machine gun cut loose on the advancing columns, reinforced by the fresh contingents recently thrown in from other fronts and from the reserves. The result was that the Germans, although their attacks had been prepared by heavy bombardments, were badly cut up and failed to attain their object.

British Also Gain.

Signs of renewed activity also appeared yesterday on the British front in the Arras battlefield, where some gains in the Lens region and east of Fampoux were reported, extending last night to the district northwest of St. Quentin. London today reports British progress in the neighborhood of Villers Giselain, midway between St. Quentin and Cambrai.

ADVANCE SALE OF TICKETS FOR PINAPORE PRODUCTION.

The advance sale of tickets for the coming presentation of H. M. S. Pinafore opened yesterday with a rush.

There has been a big advance sale but there are still good seats left for both nights. Under the new seating arrangement at the Opera House every seat on the lower floor is a good one with clear view of all parts of the stage. The balcony seats are also very desirable for enjoying a musical production. Holders of exchange tickets have until Tuesday to exchange their tickets—after that the plan will be open for everybody. Get yours now.

VAUDEVILLE CHANGE AT THE OPERA HOUSE TODAY.

The usual weekly change of high class vaudeville at the Opera House today includes the Three Jons in a comedy singing, talking and pianoboue novelty; Mr. and Mrs. Ernest Cordis in a comedy dramatic sketch. "The

Master Move"; Fairbanks and Major in a singing and talking skit; Bragger Bros., comedy acrobats and bar experts; Rutile Voltaire, dainty comedienne, in songs and bag pipe selections, and the 11th chapter of the Crimson Stain Mystery.

Two shows this afternoon, at 2 and 7:30—usual two performances tonight at 7:30 and 9. Seats may be reserved in advance for first show tonight but must be called for before 7:30 p. m.

Chicago, April 20.—Less Darcy, the Australian pugilist, whom the American authorities have barred from engaging in fights on the ground that he was a slacker, sent word from Memphis that he would enlist under the American colors if permission was given him by the military authorities to engage in several fights booked for next June and July.

Relieve Your Liver

When your liver is out of order, your head, stomach, bile and bowels suffer with it. That is why a bilious attack is often serious. Ward it off with a few doses of

BEECHAM'S PILLS

which gently arouse a sluggish liver, and renew the activities so necessary to good health. They never produce any disagreeable after-effects. Their prompt use is beneficial to the system, and will

Prevent Bilious Attacks

Worth a Guinea a Box

Prepared only by Thomas Beecham, St. Helena, Lancashire, England. Sold everywhere in Canada and U. S. America. In boxes, 25 cents.

Why Don't You Have Your Spring Clothes

Made to Your Measure—They Cost No More The E. & S. Way

ALL things being equal, you would rather dress up this spring in a New Suit or Overcoat created and designed specially for you—tailored, in its every detail, to your taste and body lines.

The Cost need not bother you this Spring—the same money you would otherwise spend for a stock-size "Ready-Made" will enable you, this season, to have your Spring garments designed and drafted exactly to your preference—you can have each garment cut precisely to your own fancy—as to style—shape and general effect. And \$15 is all you need to pay.

Suit or Overcoat

\$15

English and Scotch Woollen Co.

NO MORE NO LESS

Made To Your Measure

OUR enormous output enables us to put custom tailor service on a price-level with ready-made clothing—you cannot blame your pocket-book this season, if you deny yourself the better fit, style and satisfaction of made-to-measure clothes. You can have your 1917 Spring Suit or Overcoat made to your order just as well as not. If you say you want it made that way, and the cost will be only \$15—it's up to you. May we expect you to-day?

Yalavau
President

English & Scotch Woollen Co.

18 GREAT TAILOR SHOPS IN CANADA

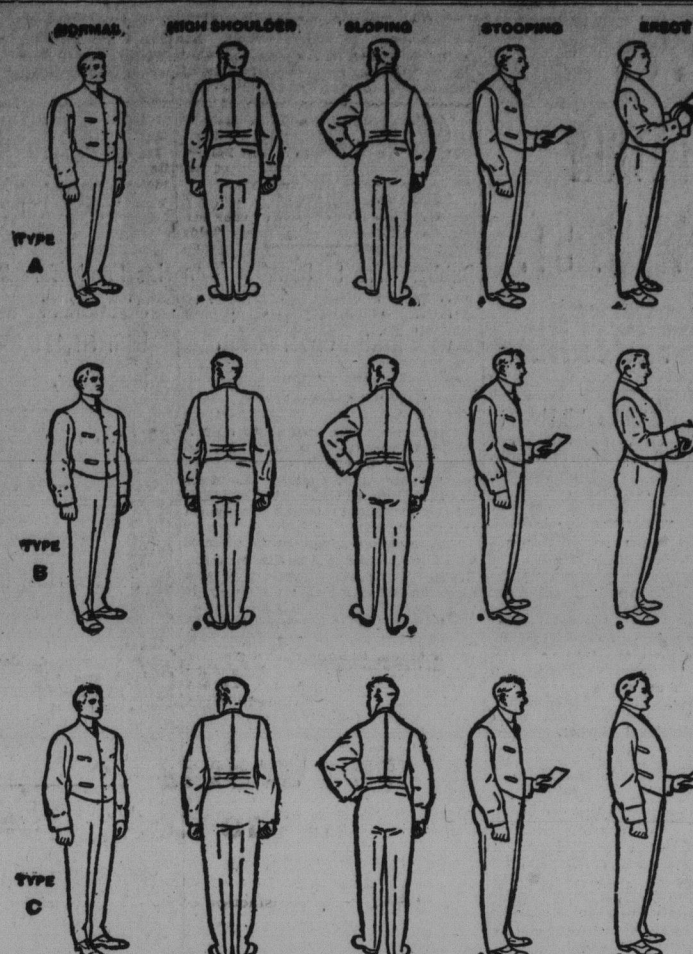
SIX CONVENIENTLY LOCATED MONTREAL STORES

261 St. Catherine West, Near Bloor 281 St. Catherine E., Cor. Maisonneuve 415 St. Catherine E., Near St. Hubert
1740 Notre Dame W., Nt. St. Henri Depot 1835 St. Catherine E., Near Cuvillier 504 Mount Royal E., Near Papineau

Lachine, Quebec Sherbrooke, Three Rivers Amherst, N.S. St. John, N.S. Moncton, N.B. Charlottetown, P.E.I.
Fredericton, N.B.

Out-of-Town Men: Write for Free Samples, Fashion Plates, Self-Measure Form and Tape Line Address 415 St. Catherine Street East, Montreal.

32 Charlotte Street, St. John, N. B.



Every Man Finds His Measure in a Semi-ready Suit

Science and a careful compilation of physiological facts has demonstrated the Semi-ready Physique Type System—which has made possible the tailoring of most expensive cloth to the try-on stage without risk of a single misfit.

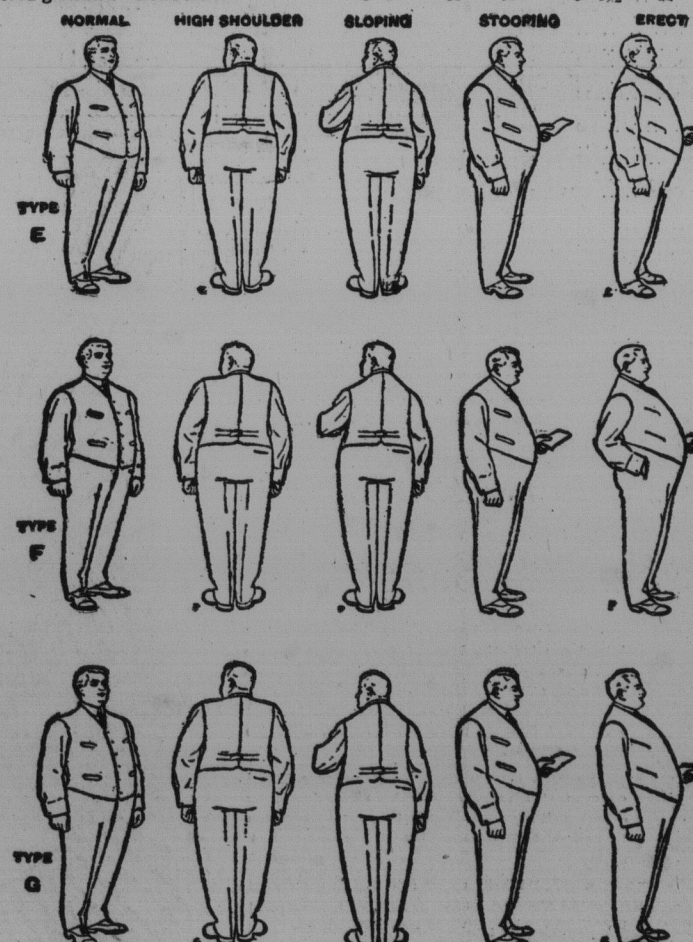
Breast and waist measures change. Height is the standard—the basis of the seven divisions and the five sub-divisions in the Physique Types—on which Semi-ready garments are designed.

A suit not intended for your physique type can seldom be made to fit even by the expert tailor. Any man can know his own type by taking his height and weight and studying the size ticket on the Semi-ready garment.

Semi-ready clothes are designed to fit with the least amount of alteration. All the parts are made with outlets.



The label and the price is in the pocket of every genuine Semi-ready tailored garment. Look for it!



SEMI-READY STORE

Corner King and Germain Streets