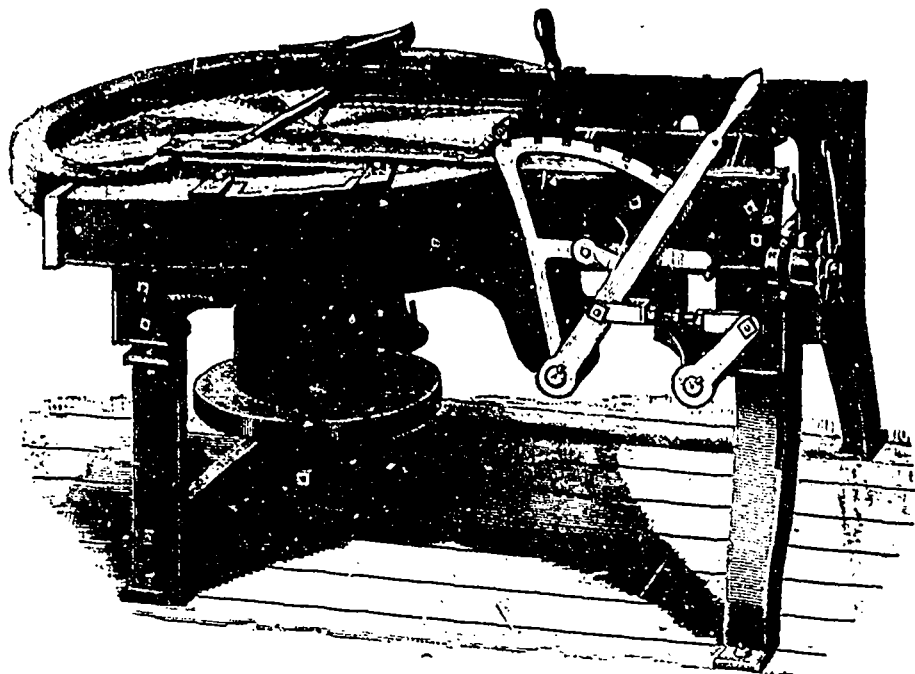


Dauntless Shingle, Heading and Box-board Machine . .



The strongest, easiest running and most economical to operate.

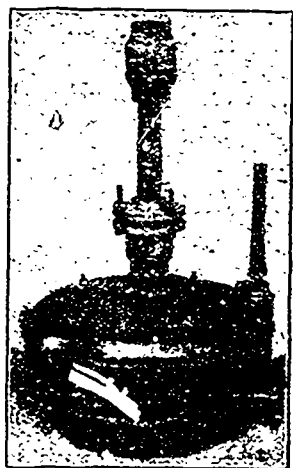
I am now fitting these machines with 40 in., 42 in., or 44 in. saws as may be desired. Standard size machines take in blocks up to 20 in. long, 18 in. wide. When specified in order I make a special type of carriage to take blocks up to 26 in. long by 20 in. wide and fit the carriage with special dogs, enabling the operator to saw four thin shingles from piece of board 1 in. thick.

No trouble with this machine to make two pieces of box board 7/16 in. thick from 1 in. cull lumber.

I make complete outfits and can quote low prices. Catalogues.

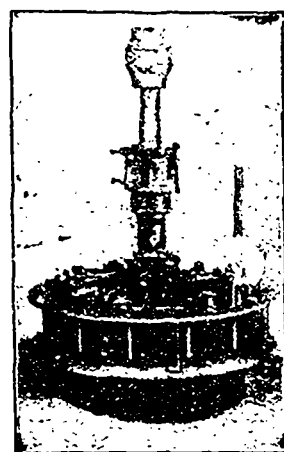
F. J. DRAKE, - Belleville, Ont.

Do You Need a Turbine?



Now is the best possible time for replacing your old, worn-out wheel with a new Turbine that will save Worry, save Time, and make Money for you. If you want a well built wheel, a wheel that will give you steady reliable power every day, a wheel that will save water, a wheel that will last you a lifetime, and that is sold at a reasonable price, then write us for catalogue and prices on the

Standard Leffel and Vulcan Turbines.



They are better developers to-day than ever before, and are growing in popularity, as our order books show.

We have now for distribution our new **SAW** and **SHINGLE MILL MACHINERY CATALOGUES**, with engravings and descriptions of our machines with their latest improvements. We will be glad to send you one on receipt of your address. You cannot buy a better Portable Mill than the "Lane Improved".

MADISON WILLIAMS, PORT PERRY, ONT.

H. E. PLANT, Agent,
Cor. Common & Nazareth Sts., MONTREAL.

SUCCESSOR TO
PAXTON, TATE & CO.

Winnipeg Machinery & Supply Co.
Western Selling Agents, Winnipeg