

FIRE ONLY! FIRE ONLY!
INSURE WITH THE
Phoenix Insurance Co.,
OF HARTFORD.

CASH CAPITAL, \$2,000,000

TIME TRIED. FIRE TESTED.

LOW RATES
LARGE SECURITY
LIBERAL SETTLEMENTS

Agents Throughout the Dominion.

GERALD E. HART,

GENERAL MANAGER FOR THE
DOMINION

HEAD OFFICE, - MONTREAL.

Walker's **PURE CANDY**
Sent to any address. Enclose from \$1 for sample Box to Headquarters, 254 St James St. Montreal.

DINNEFORD'S
The Universal Remedy for Acidity of the Stomach, Headache, Heartburn, Indigestion, Sour Eructations, Bilious Affections.
The Physician's Cure for Gout, Rheumatic Gout and Gravel; the safest and most gentle Medicine for Infants, Children, Delicate Females, and the Sickness of Pregnancy.

DINNEFORD'S FLUID MAGNESIA
MAGNESIA
Sold Throughout the World.
N.B.--ASK FOR DINNEFORD'S MAGNESIA.

VIAL'S WINE

TONIC ANALEPTIC STRENGTHENING

The most powerful Tonic that must use
Convalescent, Old people, Women, Weakly Children and all delicate persons.

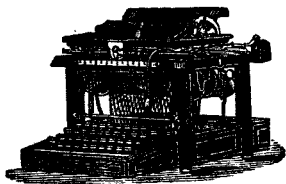


WITH **QUINQUINA BARK JUICE OF MEAT PHOSPHATE OF LIME**

Composed of the substances absolutely indispensable to the formation and development of muscular flesh, nervous and osseous systems.

VIAL'S WINE is the compound of the most active medicines against Anemia, Chlorosis, Consumption, Dyspepsy, Gastritis, Grand Climacteric, Nervous Exhaustion, Debility resulting from old age, long convalescences and every state of languor and extenuation characterized by the loss of appetite and strength.
J. VIAL'S Pharmacy, quondam preparator in the School of Medicine and Pharmacy VICTOR-HUGO STREET, 14, LYON AND ALL PHARMACIES

THE REMINGTON
Standard Typewriter. ☀



☀
1892 Model.
☀

A Finished Remington Sold Every 5 Minutes.

Call and see the Latest Improvements.

CANADIAN DEALERS:
Spackman & Co., Geo. Bengough,
164 St. James Street, 12 Adelaide Street,
MONTREAL. TORONTO.

THE
Sabiston Bindery

Is one of the most complete in America.
The binding of

FINE ART WORKS

is a special feature. The greatest attention is given to the work, and only the most experienced hands employed.

Sabiston Litho. & Publishing Co.,
MONTREAL.

Intercolonial Railway.
1892 Summer Arrangement. 1892

Commencing 27th June, 1892, through express passenger trains run daily (Sundays excepted), as follows:

Leave Montreal by Grand Trunk Railway from Bonaventure Station.	23 15	7 55	
Leave Montreal by Canadian Pacific Ry from Windsor St Station.			20 40
Leave Montreal by Canadian Pacific Railway from Dalhousie Sq.	22 30	8 10	
Leave Lewis.	8 30	14 20	
Arrive Riviere du Loup.	11 45	18 45	
Arrive Trois Pistoles.	13 05	19 55	
Arrive Rimouski.	14 52	21 37	
Arrive St. Flavie.	15 30	22 15	
Arrive Campbellton.	19 15		
Arrive Dalhousie.	20 05		
Arrive Bathurst.	21 20		
Arrive Newcastle.	22 40		
Arrive Moncton.	1 05	15 45	
Arrive St. John.	3 55	12 50	
Arrive Halifax.	8 00	22 10	

The Buffet sleeping car attached to express train leaving Montreal at 23.15 o'clock (Saturday excepted) runs through to Halifax without change.

The trains to Halifax and St. John run through to their destination on Sundays.

All the cars on express train leaving Montreal at 7.55 o'clock run through to St. Flavie without change.

The trains of the Intercolonial Railway between Montreal and Halifax are lighted by electricity and heated by steam from the locomotive.

All trains are run by Eastern Standard Time.

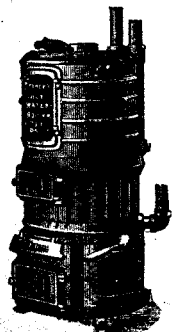
Through tickets may be obtained via rail and steamer to all points on the Lower St. Lawrence and in the Maritime Provinces.

For tickets and all information in regard to passenger fares, rates of freight, train arrangements, &c., apply to

G. W. ROBINSON,
Eastern Freight and Passenger Agent,
136 1/2 ST. JAMES STREET,
Montreal.

D. POTTINGER,
Chief Superintendent.

RAILWAY OFFICE,
Moncton, N.B.
25th June, 1892.



THE
SPENCE HOT-WATER HEATER.

HAS THE LEAST NUMBER OF JOINTS.
IS NOT OVERRATED.
IS STILL WITHOUT AN EQUAL.

SEND FOR PRICE LISTS AND TESTIMONIALS.

WARDEN KING & SON,
110 Adelaide St. West, # 637 Craig Street,
TORONTO. MONTREAL.