

the game. The subscription, 10s 6d per session, was another stumbling block to many willing learners. However, early in 1874 a few persevering individuals formed a club at the Church Institute, which has succeeded beyond expectation. A similar club was soon after formed at the Young People's Christian and Literary Institute, and this was followed by a third club at the Catholic Institute. (The combined institutes possess about 4000 members.) Since then there has been no lack of friendly matches, tournaments, &c., both winter and summer, and a player may ensure practice any night, Sundays excepted, throughout the year. Many youths have been taught Chess through the medium of the Institute clubs. There are now over 100 regular players in the town, and the utmost good feeling and healthy rivalry exist between them. In addition to local clubs, there are three other clubs easily accessible to Hull players—viz., the flourishing Grimsby and District Club, numbering 50 members, and the Barton and Withernsea Clubs.—"The World."

We see it announced in the Quebec Chronicle that the Sixth Annual Congress and Tourney of the Dominion Chess Association will be held in that city early in September. We should like to make a few remarks on this, but want of space compels us to leave them for next week.

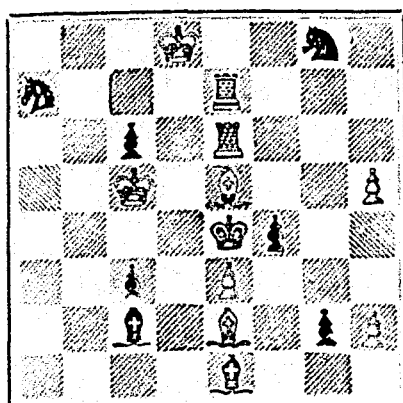
We are glad to see that the spirited Chess song, "The Royal Game," composed by Mr. J. Henderson, of the Montreal Chess Club, has found its way into the newspapers on the other side of the Atlantic.

At the request of several of our Correspondents we insert in our Column to-day one of the excellent problems of Herr Kohitz. We cannot, however, withhold the solution beyond the usual time. In the course of a fortnight we feel sure its difficulties will be overcome by a good number of our chess friends.

## PROBLEM No. 119.

By HERR KOHITZ.

BLACK



WHITE

White to play and mate in three moves.

CHESS IN SCOTLAND.  
GAME 172nd.

Played between Messrs. Blackburne and Bird in the first round of the Glasgow Handicap of 1875.

(Petroff Defence.)

- |                         |                     |
|-------------------------|---------------------|
| WHITE.—(Mr. Blackburne) | BLACK.—(Mr. Bird.)  |
| 1. P to K4              | P to K4             |
| 2. K Kt to B3           | K Kt to B3          |
| 3. Q Kt to B3 (a)       | Q Kt to B3 (b)      |
| 4. B to K5              | B to B4             |
| 5. Kt takes P           | B takes P (ch)      |
| 6. K takes B            | Kt takes Kt         |
| 7. P to Q4              | Q Kt to K5 (ch)     |
| 8. K to K5 (a)          | P to B3 (d)         |
| 9. B to K2              | P to Q3             |
| 10. P to K R3           | Kt to B3            |
| 11. K to R2             | B to K3             |
| 12. R to Bsq            | Kt from R3 to Kt sq |
| 13. Q to Ksq            | P to K R4           |
| 14. P to Q5             | B to Q2             |
| 15. B to K B4           | Q to K2             |
| 16. R to Qsq            | P to K Kt4 (e)      |
| 17. B takes Kt P        | Kt to K5 (ch)       |
| 18. B takes Kt          | Q takes B           |
| 19. B takes P (ch)      | K takes B           |
| 20. P takes P (ch)      | K takes P           |
| 21. R to B5             | Q to K2             |
| 22. Q to Q2             | Resigns (f)         |

## NOTES BY W. N. POTTER.

(a) An unfrequent but perfectly safe continuation against the Petroff Defence.

(b) Better, we think, is B to K5, when the game might have gone on as follows:—

- |                |               |
|----------------|---------------|
| 4. Kt takes P  | 3. B to K5    |
| 5. Q P takes B | 4. B takes Kt |
| 6. Kt to K B3  | 5. P to Q3    |
| 7. B to Q3     | 6. Kt takes P |
| 8. Castles     | 7. Kt to K B3 |

(c) White has a position of unquestionable superiority.

(d) He has nothing better.

(e) Mere desperation, of course. We suppose P to Q R4, though bad, is not worse. Anyway, the game is practically over.

(f) Mr. Bird, like many other first class players, more especially those of the English school, has never gone in for acquiring much scientific knowledge. The present game is an instance of natural skill very soon coming to grief for want of theoretical requirements. Such instances sometimes (but not very often) occur, and in a general way, we are inclined to think that overloading the memory with variations does not lead to an enhancement of Chess power.

## GAME 173rd.

A brilliant skirmish played in the Dundee Club room on the 10th of March last.

From the Glasgow News of the Week.  
(Fraser's Attack in the Scotch Gambit.)

- |                           |                  |
|---------------------------|------------------|
| WHITE.—(Mr. C. R. Baxter) | BLACK.—(Mr. —)   |
| 1. P to K4                | P to K4          |
| 2. K Kt to B3             | Q Kt to B3       |
| 3. P to Q4                | P takes P        |
| 4. Kt takes P             | Q to R5          |
| 5. Kt to K B3 (a)         | Q takes K P (ch) |
| 6. B to K2                | Kt to K5         |
| 7. Kt to Q R3             | B to Q B4        |
| 8. Castles                | Kt to K2         |
| 9. Kt to K Kt5 (b)        | Q to Q4          |
| 10. B to Q3 (c)           | B takes B        |
| 11. P takes Kt            | B takes Kt       |
| 12. P takes B             | P to K R3        |
| 13. Kt to K4              | P to Q Kt3       |
| 14. B to Kt2              | Castles          |
| 15. Q to Kt4 (d)          | Kt to Kt3        |
| 16. P to K B4             | P to Q3          |
| 17. P to K B5             | K to Rsq         |
| 18. P to K B6             | P takes P        |
| 19. B takes P (ch)        | K to R2          |
| 20. B to Kt2              | P to K B4        |
| 21. Kt to Kt5 (ch) (e)    | K to Kt sq       |
| 22. Q to Kt5              | Kt to K4         |
| 23. Q takes K R P         | R to K B2        |
| 24. Kt takes R            | Q takes Kt       |
| 25. R to K B3             | Kt takes R (ch)  |
| 26. P takes Kt            | Black resigns    |

## NOTES.

(a) Mr. Fraser has published in the Chess Players' Chronicle (January and February 1877) an analysis of this, his attack. As Mr. Fraser is considered one of the ablest analysts of the present day, his "investigations" should be of great interest to Chess players.

(b) Weak. P to Q B3, followed by P to Q Kt4, would give White the better game.

(c) B to Q2 is much stronger. The Exchanges leave Black with the superior game.

(d) From this point Mr. Baxter conducts the attack with great vigor and precision.

(e) Bravo! All this is admirable.

Our readers, when they play over this game from move 15, will exclaim, "This is, indeed, Chess!" Black, when he resigns, leaves a problem for the juveniles.

## SOLUTIONS.

Solution of Problem No. 117.

- |              |             |
|--------------|-------------|
| WHITE.       | BLACK.      |
| 1. R to Q B2 | 1. K to K5  |
| 2. B to K6   | 2. Any move |
| 3. B mates   |             |

Solution of Problem for Young Players, No. 115.

This problem is incorrect in our last Column. The Black Kt must be removed, and a white P placed on White's K B2

- |                           |            |
|---------------------------|------------|
| WHITE.                    | BLACK.     |
| 1. P to K B3 (ch by disc) | 1. K to K4 |
| 2. Q mates.               |            |

## PROBLEMS FOR YOUNG PLAYERS NO. 116.

- |           |                         |
|-----------|-------------------------|
| WHITE.    | BLACK.                  |
| K at K R  | K at K R                |
| Q at K R4 | Pawns at K R7 and K R7. |

White to move and mate in two moves.

## BANK OF MONTREAL.

NOTICE IS HEREBY GIVEN THAT A Dividend of Six Per Cent.

upon the Paid-up Capital Stock of this Institution has been declared for the current half-year, and that the same will be payable at its Banking House in this city, on and after

FRIDAY, the FIRST of JUNE next.

The Transfer Books will be closed from the 16th to the 31st May next, both days inclusive.

The Annual General Meeting of the Shareholders will be held at the Bank on

MONDAY, the FOURTH of JUNE next.

The chair to be taken at One o'clock.

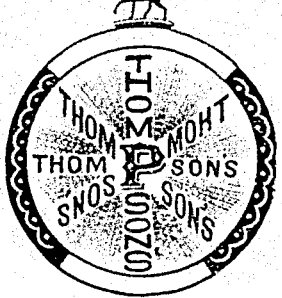
P. B. ANGUS.

General Manager.

Montreal, 29th April, 1877.

## HATS!

Spring Styles!



15-9-213

After an absence of twelve years we have recommenced Business. All new Stock. Hats to suit all ages and Pockets. Best Goods. Best value. Every Hat marked in plain figures. Terms cash. One price. No bad debts. A call solicited when in the City. JOB C. THOMPSON & CO., 416, Notre Dame St., corner St. Peter. The old and reliable Hat Corner.

WANTED, AGENTS for a staple article, sells at 30 out of 100 houses. Profits 500 per cent. Agents make \$100 per month easy. Particulars Free. Address,

MONTREAL NOVELTY CO., MONTREAL, P. Q.

## THE ADAMS TOBACCO COMPANY.

The ADAMS TOBACCO COMPANY will apply to the Legislature of Quebec for authority to borrow money upon the security of its property, and to confirm the loan already effected.

By order of the Board.

G. G. MACPHERSON.

Montreal, 25th April, 1877.

Secretary-Treasurer.

THE COOK'S FRIEND  
BAKING POWDER

Has become a HOUSEHOLD WORD in the land, and is a HOUSEHOLD NECESSITY

in every family where Economy and Health are studied. It is used for raising all kinds of Bread, Rolls, Cakes, Buns, Cakes, Griddle Cakes, &c., &c., and a small quantity used in Pie Crust, Puddings, or other Pastry, will save the usual shortening, and make the food more digestible.

## THE COOK'S FRIEND

SAVES TIME. IT SAVES TEMPER. IT SAVES MONEY.

For sale by storekeepers throughout the Dominion and wholesale by the manufacturer.

W. D. McLAREN, UNION MILLS, 13-17-52-110, 55 College Street.

WANTED MEN to travel and sell to Dealers our new unbreakable glass chimneys and lamp goods. NO FEEDLING. Salary liberal, business permanent. Hotel and travelling expenses paid. MONITOR LAMP CO., 264 Main St., CINCINNATI, OHIO.

## TO LET

A FIRST-CLASS BRICK DWELLING, No. 1464 Abbottsford Terrace (opposite Emmanuel Church), St. Catherine Street, in good order, well drained, and rat-proof. Rent moderate.

Apply to G. B. BURLAND,

Burland-Desbarats Lith. Co., Bleury St.

In consequence of spurious imitations of  
**LEA AND PERRINS' SAUCE,**  
which are calculated to deceive the Public, Lea and Perrins have adopted A NEW LABEL, bearing their Signature, thus,

which is placed on every bottle of WORCESTERSHIRE SAUCE, and without which none is genuine.

Ask for LEA & PERRINS' Sauce, and see Name on Wrapper, Label, Bottle and Stopper. Wholesale and for Export by the Proprietors, Worcester: Crosse and Blackwell, London, &c., &c.; and by Grocers and Oilmen throughout the World.

To be obtained of

Messrs. J. M. DOUGLASS &amp; CO., MONTREAL; Messrs. URQUHART &amp; CO., MONTREAL.

14-14 52-165



For sale by MCGIBBON & BAIRD, DAVID CRAWFORD, St. James Street, DUFRESNE & MONGENAIS, Notre Dame Street, and by Grocers generally throughout the Dominion.

## EVERYTHING

IS THE

## BEDDING LINE

AT

Whiteside's Bedding House,

1377 ST. CATHERINE STREET.

FACTORY—66 COLLEGE STREET.

MONTREAL.

15-14-5-21

## NOW READY.

## CATHOLICITY AND METHODISM:

OR

## The Relation of John Wesley

TO

## MODERN THOUGHT,

BY THE

REV. JAMES ROY, M. A.,

Formerly Principal of the Colours Collegiate Institute and Examiner to the University of Toronto, Examiner to Victoria University.

This work will be one of very great interest to all Christian denominations, as it deals with problems that are everywhere agitating thoughtful minds. Though it treats these problems in their bearing on a single denomination, it is conceived in no sectarian spirit, but aims rather at the removal of obstacles to a large and liberal form of Christianity, by distinguishing those principles which are essential to all Christian life from the varied dogmatic forms which, at different times, these principles have assumed. It discusses the relation of the Bible to the human mind, the real and the conventional in orthodoxy, the future of Protestantism, and the relation of Methodism to Christianity and scientific thought.

The book may be ordered through any of the booksellers.

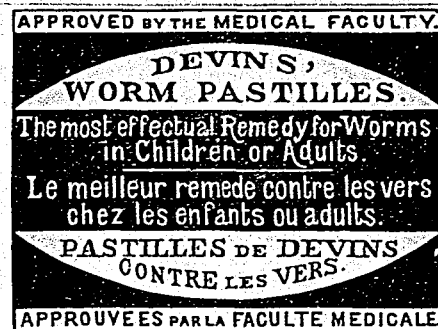
Orders from the trade will be supplied by the publishers. Discount 33 per cent.

BURLAND-DESBARATS LITH. CO.,

Montreal.

PRICE 50 CENTS.

Please send your orders without delay.



A Box will be sent to any address in Canada (post paid) on receipt of 25 cents. DEVINS & BOLTON, Druggists, Montreal.

## CHEAPEST AND BEST.



JOHN DOUGALL &amp; SON,

218 and 220, St. James Street, Montreal.

Electrotyping and Job Printing, Chromatic and Plain cheaply and neatly done.

## New Work of Vital Interest.

Post Free 12 Cents or 6d. str.

FROM

J. WILLIAMS, P. M.

22, MARISCHAL STREET, ABERDEEN, SCOTLAND, NORTH BRITAIN.

## A LONG AND HEALTHY LIFE.

CONTENTS:

- 1.—Medical Advice to the Invalid.
- 2.—Approved Prescriptions for Various Ailments.
- 3.—Phosphorus as a Remedy for Melancholia, loss of Nerve Power, Depression, and Feeble Digestion.
- 4.—Salt Baths, and their Efficacy in Nervous Ailments.
- 5.—The Coca Leaf a Restorer of Health and Strength.

14-25-52-197

50 WHITE BRISTOL VISITING CARDS, with your name finely printed, sent for 25 cents. 1000 AGENTS WANTED. Samples 3c stamp. No postals. Address A.W. Kinney, Yarmouth, N.S. 15-12-13-223.

CASH Paid for Cast-off Clothing. Address H. VINEBERG, 653 Craig St., a few doors east of Bleury.

15-12-13-222

## SHOPS TO LET.

Two fine, commodious Shops to let, No. 9 and No. 11, BLEURY ST.

Both heated by steam—one of them well fitted up with shelves, drawers, &c., and very suitable for a Tailor or Milliner's Establishment.

Apply to the

BURLAND-DESBARATS LITH. CO.

5 and 7 Bleury Street.

## OFFICES TO LET.

ONE LARGE FLAT over Mr. Latham's Drug Store, corner of Craig and Bleury Streets; also TWO FLATS in the adjoining building on Craig Street, well adapted for Offices or any Light Manufacturing Business, with or without Steam.

Apply to the

BURLAND-DESBARATS LITH. CO.

5 and 7 Bleury Street.