

SHOW CARD WRITING

BY CRAFTSMAN.

(Continued from September Number.)

If an error be made in spelling and the card is white, take a steel ink eraser and carefully scrape off the lettering, removing a little at a time and keeping above the surface of the card. When all the color is removed, rub smooth with a very fine piece of sandpaper,

If a card has a glazed surface, waterproof, like black or maroon, it is only necessary to wet the lettering and wipe it off with a damp rag. This may occupy some time if the paint is dry, but the surface of the card will be ready to receive the correction. If an alteration is to be

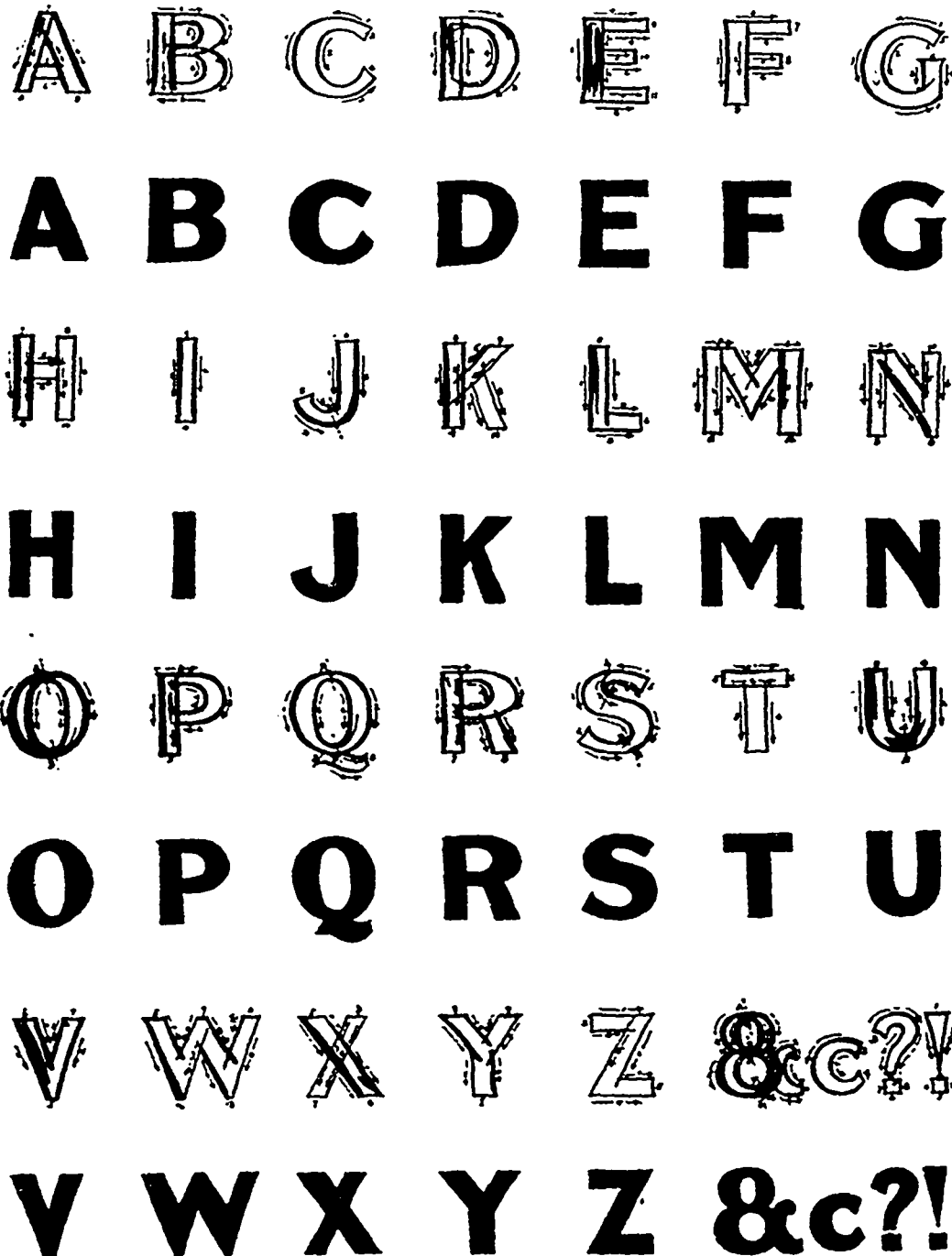


ILLUSTRATION No. 1.

then burnish the spot with your thumb nail and write the word correctly.

If the error is made on a tinted card, such as green, heliotrope, etc., the surface that has been erased must first be painted over with water-color to match it as closely as possible, then re-letter.

made on a black card with a dull surface, the lettering should be carefully scraped off and the card painted black when scraped, and re-lettered when thoroughly dry.

It must be remembered that corrections on cards are more easily noticed than when made on paper, and should therefore be avoided as much as possible.