

HANDLING TIMBER BY ELECTRICITY.

A NOVELTY in electric applications is the timber stacking crane. A London firm of timber importers found that stacking by manual labor was too slow and inefficient to meet the demands of their business. As steam was pronounced impracticable on account of the greatly increased rate charged for insurance, an electric motor was installed. The usual run of timber stacked is deal, battens and board ends, varying from one foot up to six feet in length, and of deals and

battens from six to sixteen feet long. A means was also required of suitably raising and delivering loads of short lengths, so as to reduce handling to a minimum, after delivery of each load upon the stack. Wire rope slings were used at first, and they answered well for deals and planks, but with boards the pack sagged and became so distorted that it was awkward to handle. The difficulty was overcome by a set of slings having a stiff steel rod along the bottom, and so adjustable that they would lift both thick and thin timber. The electric motor does the

work with such ease that a six-foot cube of wood, weighing three tons, can be loaded by it in four lifts of 1,500 pounds each up to the height of sixty feet, or directly into vans or wagons. The crane is available also for loading vans from any part of the stack. An unique feature of this installation is the fact that the firm intends to ascertain the net profits made by the electric crane over hand labor, and to distribute 50 per cent. of these among the men who are employed upon the work. The number of laborers engaged is about 200.

MICHIGAN

Are you thinking of moving to better your condition?

If so, come to Michigan, where you can get comfortable living, good markets, good neighborhood, reasonable transportation for your products. A PROSPEROUS STATE!

The Flint & Pere Marquette R. R. Co.

have good lands for sale, prices ranging from SEVEN TO FIFTEEN DOLLARS per acre, according to location and timber; easy terms.

You make no mistake locating in this territory.

ADDRESS:

A. Pa. rche, Traffic Manager
Saginaw, Mich.

ARE YOU LOOKING
FOR A CHANGE IN LOCATION?

If you are not satisfied with your present site, or if you are not doing quite as well as you would like to, why not consider the advantages of a location on the Illinois Central R. R. or the Yazoo & Mississippi Valley R. R.? These roads run through South Dakota, Minnesota, Iowa, Wisconsin, Illinois, Indiana, Kentucky, Tennessee, Mississippi and Louisiana, and possess

FINE SITES FOR NEW MILLS
BEST OF FREIGHT FACILITIES

CLOSE PROXIMITY TO

COAL FIELDS AND DISTRIBUTING CENTERS

AND

INTELLIGENT HELP OF ALL KINDS
MANY KINDS OF RAW MATERIAL

For full information write to the undersigned for a copy of the pamphlet entitled

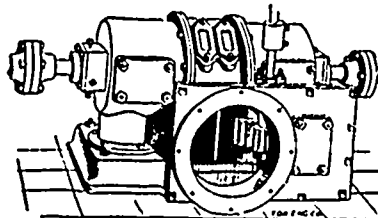
100 Cities **WANTING INDUSTRIES**

This will give you the population, city and county debt, death rate, assessed valuation of property, tax rate, annual shipments, raw materials, industries desired, etc.

To sound industries, which will bear investigation, substantial inducements will be given by many of the places on the lines of the Illinois Central R. R., which is the only road to derive one management running through from the North-Western States to the Gulf of Mexico. GEO. C. POWER, Industrial Commissioner I.C.R.R. Co., 506 Central Station, Chicago.

"Little Giant" Turbine.....

Vertical and Horizontal • Built in 44 Sizes



Complete in its own case.

No expensive flume required.

Highest percentage of power guaranteed at full and partial gate opening.

Machine Dressed Gearing, Shafting, Pulleys, Hangers, Etc.

WRITE FOR CATALOGUES AND GEAR LISTS

253 Little Giants sold
to the Canadian Government.

J. C. WILSON & CO.

GLENORA, ONT.

Mention the CANADA LUMBERMAN when corresponding with Advertisers.

OAK TANNED BELTING

TORONTO
20 FRONT ST EAST
TELEPHONE 475

THE J.C. Mc LAREN BELTING CO MONTREAL

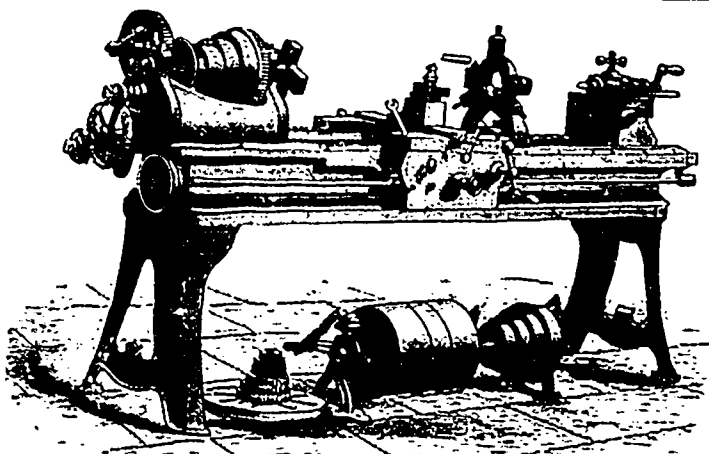
The A. R. WILLIAMS MACHINERY CO., Ltd.

95 and 97 Front St. West

TORONTO (OPPOSITE QUEEN'S HOTEL)

Are now fully established in their new building, and are prepared to show the largest stock of Machinery in the Dominion. Prices are ruling low for cash customers and enquiries are solicited.

We have at present a special **MINING PLANT**, consisting of—



STONE BREAKER, SINKING PUMP, ENGINE AND BOILER ATTACHED, HOISTING ENGINE—SEPARATE BOILER, AN ASSAY PLANT BUILT BY FRASER & CHALMERS, TWO CRAWFORD REDUCTION MILLS, SHAFTING, PULLEYS, BELTING, PIPING, ETC.

This will be sold low for an immediate order.

Also Saw-Mills, Shingle Mills, Engines, Boilers, Water-Wheels, Wood and Iron Working Machinery, Hoisting Engines, Contractors' Plant, Mill and Engineers' Supplies, Etc.