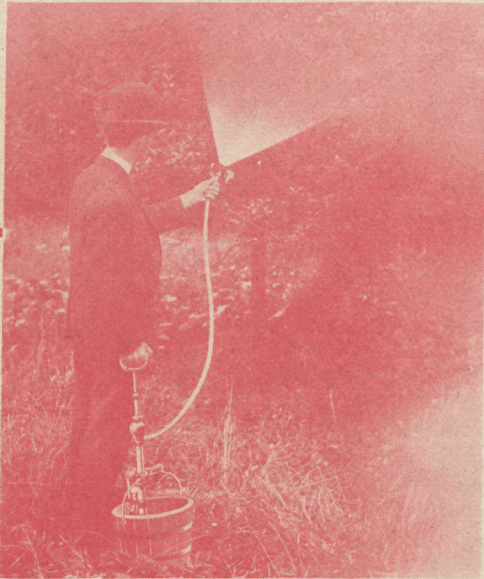


Deming Spraying Pointers



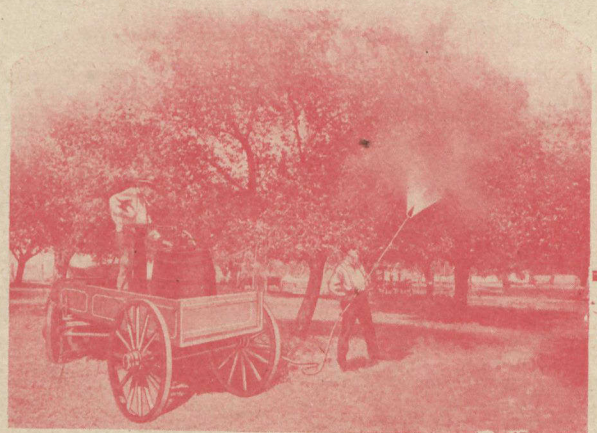
DID you ever know the grief of having a spray pump break down right in the middle of the season when you were busiest? With one such experience you would hardly care for another; if the fault lay in a poor, unreliable pump that you had purchased because it seemed like an easy "saving," you probably doubted seriously, afterward, whether or not it paid you.

Was that really economy?

DEMING SPRAYERS are built on the theory that cutting first cost at the sacrifice of quality is a poor saving—and the practice of everyday use confirms this idea. So far as concerns appearance, an iron pump is as good as a brass one; but "looks" end when the pump leaves the store, and beauty does not make a very long stand against hard usage and corrosive chemicals.

The parts which make a pump good or bad are inside—you cannot see them, but they are there just the same. In DEMING SPRAYERS these parts—valves, valve seats, plunger, cylinder, etc., are brass—spraying materials cannot corrode them; hence the life of the pump is increased.

DEMING SPRAYERS are made for you. Eighteen styles, hand and power; nozzles and attachments galore—suited exactly to your need. Let us help you select your outfit. Nineteen eight Catalogue and "Expert Testimony" will please you.



The Deming Company, Salem, Ohio

J. A. SIMMERS, TORONTO

BLACKIE BROS., HALIFAX

Mention The Canadian Horticulturist when writing