

THE  
**North American Life**

**Solid as the Continent.**

A remunerative agency contract can be secured with this Company under which an immediate return is obtained for work well done and a renewal income for the future. Competent men desiring a lucrative business connection should address,

**T. G. McCONKEY,**  
Superintendent of Agencies

HOME OFFICE, TORONTO, ONT.

THE  
**Ward Commercial Agency**

**Mercantile Reports, Collections.**

Personal Attention, Prompt Returns,  
146 St. James Street, MONTREAL.  
Attention Given to Special Reporting.

**TYRES I TYRES II**

1904 list of Tyres and Accessories now ready on application. **Special Offer of Beaded Edged Covers.** for replacements.

1st quality 5/-, 2nd quality 4/6 each.  
3rd quality 3/9 each.



**Wired-on Covers,** licensed by Dunlop Tyre Co. 7/- each. *Special Quotations for Quantities.*

**JOHN B. PARKES & CO.,**  
Bradford St., BIRMINGHAM, Eng.

**Individual Evening Instruction**

ON  
MONDAY, WEDNESDAY AND FRIDAY EVENINGS  
AT

*St. Montreal Business College*

Renouf Building, Cor. St. Catherine  
and University Streets.

Book-keeping, Arithmetic, Penmanship  
Shorthand, Type-writing, Correspondence  
English, French, Civil Service, etc. Students  
select their subjects and are taught separately  
by nine expert teachers. Write, call  
or telephone Up 151 for Prospectus and  
new price list. Address:

**J. D. DAVIS,**  
Renouf Building, Cor. St. Catherine  
and University Sts., MONTREAL.

**FLYNN BRO'S & CO.**

MANUFACTURERS OF



**WROUGHT IRON and  
COPPER GOODS...**

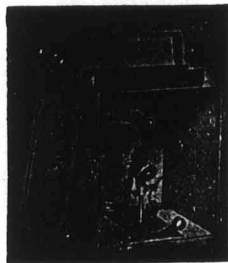
**Art Metal Workers,**

PAUL PRY WORKS,

NEW SUMMER STREET,  
Birmingham, - Eng.

**OFFORD &  
WILSON,**  
Manufacturing  
**Electrical Engineers**

98 Woodcock St. BIRMINGHAM, Eng.



**Theatre**

**Lighting**

**Accessories**

Complete Light Box set, with Lamp,  
Crutch, Condenser, and Mediums.

**J. W. NICHOLSON & SONS,**

MANUFACTURERS OF

**DOG COLLARS, WATCH  
GUARDS & PURSES.**

Station Street. WALSALL. England.

Special Prices to Canadians under the New Tariff.

**WALTER MIDDLETON** ENGLAND

DIE SINKER, TOOL MAKER,  
STAMPER & PIERCER

STEEL, IRON & BRASS PUNCHES,  
LETTER PUNCHES,  
BRASS TOOLS FOR GILDING  
ON LEATHER PLATES  
CYCLE BRANDS  
METALLIC CHECKS & LABELS,  
DIE SINKERS & LETTERS,  
CLUB BADGES,  
JEWELLERS PUNCHES,  
WINE & DESK SEALS,  
DOOR PLATED SEALS

104, VYSE ST., BIRMINGHAM

**The Fed**

HEAD OFFICE

Capital and Assets  
Assurance written  
Paid Policyholders

H. RUSSELL PO

**Ge  
Bes**

The Manufac

Head

**WAL**

PEARL BUTTON  
MANUFACTURER



BIRMING

MUDGUARDS,

RIM  
and GE

The Wasd

158 Hockley