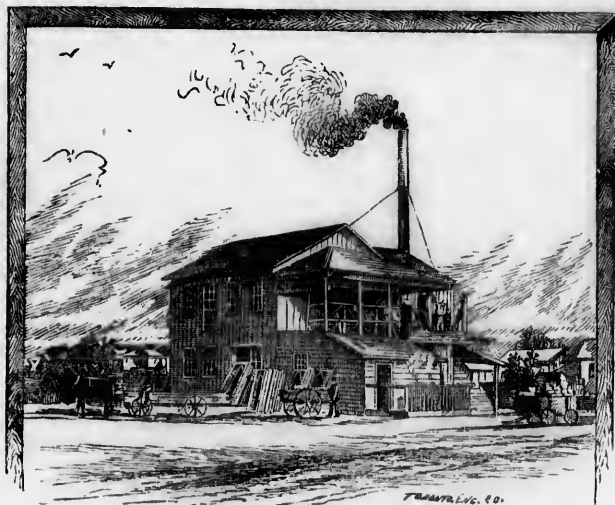


present it comprises really two store rooms where goods are exhibited for sale, and two other rooms which are used to keep extra stock in. Mr. Proudfoot had for a partner the first year and a half Mr. John Penning, since which time he has conducted the entire business himself, and for the last ten years in his present location. The grocery proper employs the space of a room 16x24, and the feed and flour store is 24x12 in extent. All the standard brands of teas, fragrant coffees, spices and sugars are to be found in this store; there are also crockery and dry goods upon his shelves. Mr. Proudfoot is a native of Canada. He was in London, Ont. 10 years and for the last 40 years he has lived in or near Goderich. However, Mr. Proudfoot has, unlike some men who change their avocation in mature life, been successful in his mercantile ventures. His gentlemanly bearing and courteous ways bring to fruition the ventures which his business judgment and common sense manner of looking at things prompt him to make. He is respected by all those who best know him. He also manufactures ginger beer on a large scale and supplies the surrounding towns.

Francis Smeeth, Manufacturer of Builders' Supplies, cor. Cameron and Nelson streets.—Possibly no auxiliary industry to any given branch of trade was ever started that was of such vital importance to it, or had so vital an influence upon it, as has the modern planing mill on the building trade. Yet the planing mill is an institution of

used in the construction of buildings, or the most elaborate wood-work ornamentation desired—is a thing of recent growth and marks an era in the civilization of the nineteenth century, that, in its way, has had as marked an effect in the progress of the people as has steam locomotion or the electric telegraph. Prominent amongst those who are engaged in builders' supplies of superior quality is Mr. Francis Smeeth, whose factory and office is located at the corner of Cameron and Nelson streets. This gentleman commenced operations in his line in 1873 and has since built up a large and permanent trade, which extends widely through this section. The factory covers some three-quarters of an acre, and is equipped with every appliance and modern improvement for the efficient prosecution of this business, and which since its establishment has proved a potent factor in the development of the building interests of this locality. This establishment turns out planed lumber, doors, sash, blinds and all the multitude of articles manufactured in a planing mill. Its products stand high in the estimation of the trade, due to the excellence of the workmanship and the promptitude with which orders are executed. Mr. Smeeth is also an extensive dealer in lumber, turning over some 250,000 feet annually. Mr. Smeeth is a native of England, but has spent most of his life in this country, coming out here some forty-eight years ago; he is a thoroughly practical man, and in commercial and social circles is esteemed and respected, both as a business man and an upright private citizen.



comparatively recent introduction, having been in existence but about a quarter of a century. True, there were what were then known as sash, blind and door factories, but the elaborate planing mill of to-day—the manufacturing institution that turns out in a moment, the flooring, siding, etc.,

Goderich Flour Mills, Ogilvie & Hutchison Harbor.—In a country surpassed by none in the production of wheat the flouring industry of Canada is alike unique in its character. Our facilities are greater, and our manufactured products are of that general excellence of quality, which