

QUESTION: What do you think of the changes which have taken place in the Social Club this year?

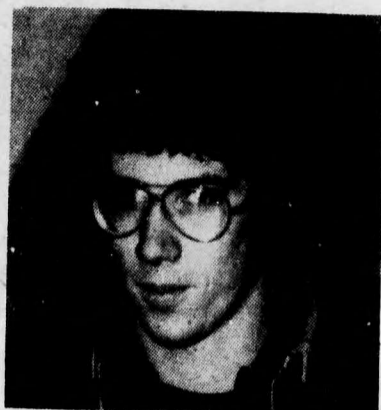
INTERVIEWS: Kim Matthews  
PHOTOS: Anne Kilfoil



Rip Simmerling SE V  
As long as the beer's cold.



Cathy, Sue & Ann Nursing III  
Ask Mary Spencer!!



John Hasson SE V  
Changes are nice but I'm usually too drunk to see them.



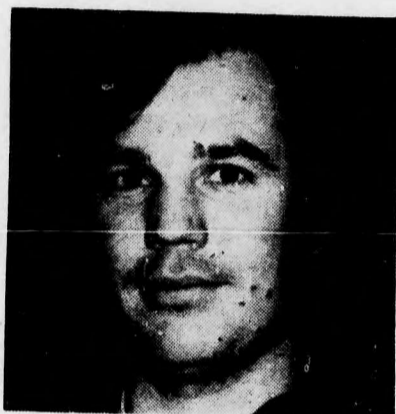
Margo Emery BSc IV  
Very good, great.



Anne Spurway BA IV  
I think it's a lot nicer, the atmosphere is better.



Elizabeth Forestell BA III  
It stinks! I liked it better when it was grubby.



David Harding PEd. IV  
Lots of improvements, better atmosphere.



Janice Legere BEd. I  
A lot more people, better all the way around.



Margie, Leanne, Sherrie 1st River Tibbits  
The scenery is much better.



Norm Arbeau SC V  
It is an improvement, it needs more chairs but it looks better. It's too cold!!

## BEAVER FOODS PRESENTS

# THE GOOD LIFE



MONDAY — Lady Dunn and Tibbits

TUESDAY - McConnell Hall

WEDNESDAY - L.B.R.

THURSDAY - McLeod House

FRIDAY - S.U.B.



- Discuss your nutrient intake with our dietician.
- Fill out an analysis sheet and get a chance to win a dinner at the Attic Cafe.
- Monday Jan. 19th. to Friday Jan. 24th.

W  
fun  
it  
im  
do  
am  
S  
the  
que  
giv  
fiel  
The  
dep  
pol  
tau  
N  
stud  
bey  
Pro  
fiel  
inv  
stat  
and  
in s  
he s  
inte  
the  
No  
shou  
is  
lang  
The  
won  
mist  
scie  
tion  
beh  
tion  
sub  
econ  
tors  
All i  
"a v  
fiel  
impr  
lucky  
Th  
man  
icatio  
strict  
invol  
and  
modi  
conve  
cal r  
persp  
of ch  
and p  
use  
as la  
these  
value  
ions  
One  
paral  
how s  
with  
studie  
psych  
tioned  
of spe  
pitche  
and o  
dent s  
intake  
moan  
laugh  
and  
forms  
tion a  
social  
menta  
says,  
from  
The  
and m  
the fie  
tion. T  
is con  
of the  
and po