

Round the Evening Lamp.

Puzzles, Problems, Rebuses, &c.

We are in receipt of many letters from our readers complimenting us on our introduction of this department. We are pleased to know that our efforts to provide our readers with an up-to-date puzzle page is being appreciated. Our aim in the future will be to make this department the equal of any in our magazine.

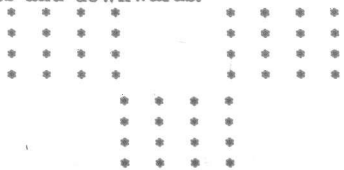
The answers to puzzles in October number appear on this page.

No. 1.—ELLIPSES.

In each sentence fill the first blank with a missing word, and the second blank with the same word transposed.

1. The — table is a — purchase.
2. The captain tried to — his company from the —.
3. The — was accused of —.
4. Though —, he — the conflict.

manner that they will read the same across and downwards.



Left square: wan, space, not as much, a point of the compass.

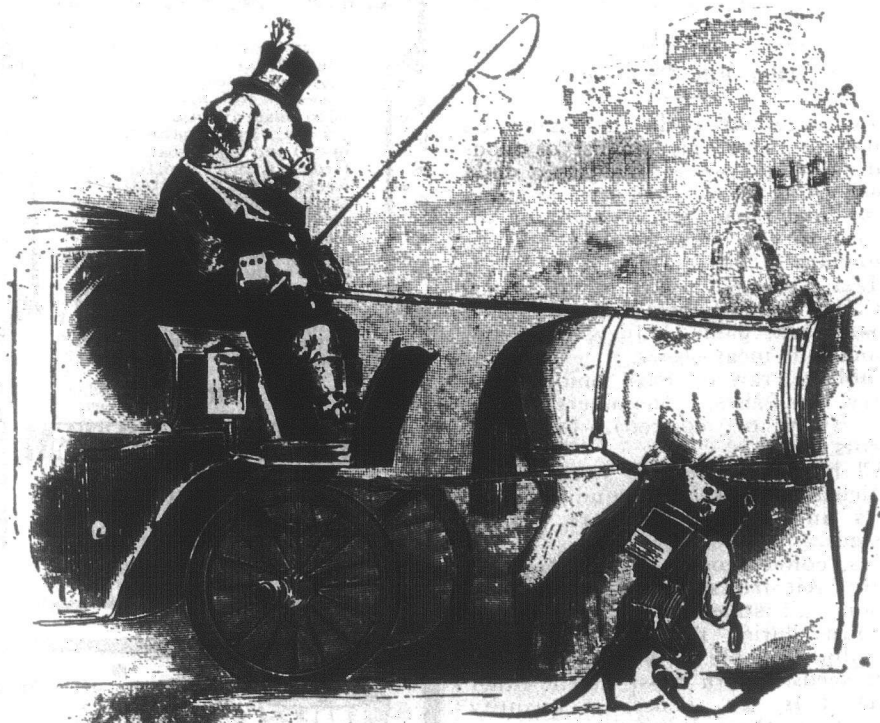
Right square: a trial, a lake of the United States, a part of a window, to narrate.

Central square: a water bird, on the top of, a boy's name, a time of day.

No. 7.—RIDDLE.

Long time ago, I lived and grew, And flourished in the sun and dew;

No. 2.—PICTORIAL PUZZLE.



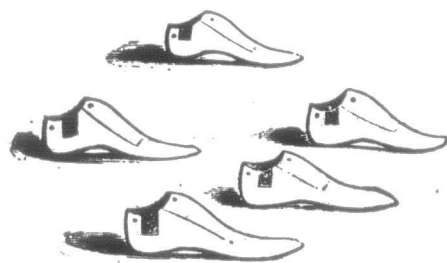
Find in the above picture:—1. A nickname for Boston. 2. A member of society. 3. A military command. 4. A story. 5. An arrow. 6. A colloquial name for an English servant. 7. A fine yellow wood. 8. A period. 9. Rains (reins). 10. A verb meaning "to weary." 11. A verb meaning "said." 12. Sixty-three gallons. 13. Something under every eye. 14. Blows with a hatchet.

No. 3.—OLD TIME HANDY LADDER.

- | | | | |
|----|---|---|-------------------------|
| 2 | 1 | 4 | 2 to 4, an exclamation. |
| 5 | 6 to 8, a girl's name. | | |
| 6 | 10 to 12, not rarely. | | |
| 7 | 14 to 16, the total. | | |
| 8 | 18 to 20, to see. | | |
| 9 | 22 to 24, custom. | | |
| 10 | 27 to 29, snare. | | |
| 11 | Main post, 1 to 23, expression of gratitude | | |
| 12 | Right prong, 23 to 31, situation. | | |
| 13 | Left prong, 23 to 30, sound in mind. | | |
| 14 | 25 to 26 | | |
| 15 | 27 to 28 | | |
| 16 | 29 | | |
| 17 | 31 | | |

No. 4.—PICTORIAL TRANSPOSITION.

Transpose the letters of the two words expressing the number and name of the objects in the picture into a single word which will answer to the definition given below the picture.



Feasts.

No. 5.—PROBLEM.

A farmer milks 88 quarts of milk from 5 cows. From the first he milks 3 quarts less than he does from the second; from the third he milks 5 quarts more than he does from the first; from the fourth he milks 7 quarts less than he does from the third; from the fifth he milks 2 quarts more than he does from the first. How many quarts did each cow give?

No. 6.—BLENDED WORD SQUARES.
A Word Square consists of a certain number of words of the same length placed one beneath another in such

Great reptiles crawled around my feet, And sought relief from summer's heat. Then tired of life, I made a grave Beneath the cold and briny wave. The ages passed, the sea withdrew, And new-made lands came into view. Long years I hid from human sight; Till in these times I found the light. When winter's blasts o'er all things roam, I help to make a pleasant home.

No. 8.—PREFIX PUZZLE.

- Prefix the same syllable to:
1. A contemptible dog, and make to agree.
 2. A kind of beetle, and make one of the largest of birds.
 3. Strong, and make to ratify.
 4. A fish, and make to comfort.
 5. A region, and make an agreement.
 6. Worn out, and make penitent.
 7. An edge, and make to incline together.
 8. A shelter, and make satisfaction.
 9. A searching trial, and make a dispute.

Answers to Puzzles in October Number.

- No. 1. Geographical Question Puzzle—1. Garden City. 2. Waukon.
No. 2. Illustrated Rebus.—The Witches Spell. Spell it who can.
S | P | E | L | L | I | T | W | H | O
C | A | N

No. 3. Omitted Verse.—"Vessels large may venture more, but little boats should keep near shore."

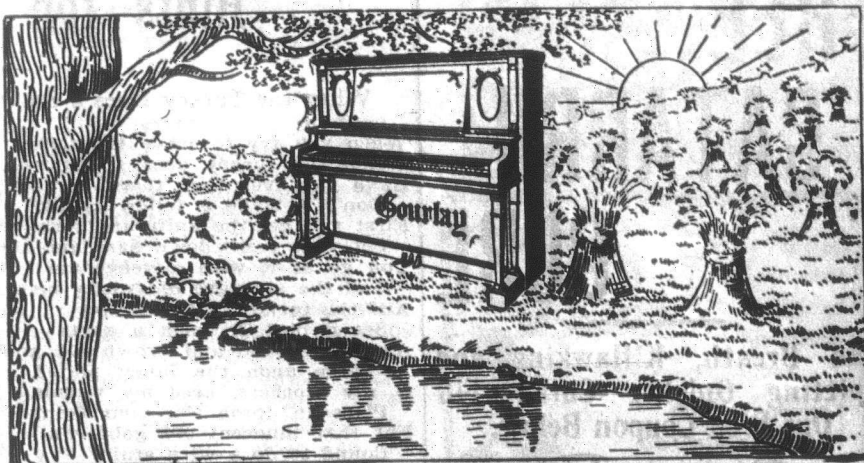
No. 4. Problem.—2,560 posts; 2,560 acres. This farm is two miles square.

No. 5. Pictorial Puzzle.—Plum, lime, date, prickly-pear.

No. 6. Old Style Conundrum.—Because hers is the highest state of being (being).

No. 7. Beheaded Rhymes.—1. Whale, hale, ale. 2. Shark hark, ark. 3. Scold, cold, old.

No. 8. Ellipses.—1. Speculation, peculation. 2. Galley, alley. 3. Grope, rope. 4. Strap, trap. 5. Sink, ink. 6. Table, able.



AMONG OTHER FACTS ABOUT CANADA.

REMEMBER THIS — ONE OF THE MOST INTERESTING, NOTEWORTHY AND IMPORTANT OF ALL

Gourlay Pianos

are the finest specimens of the Piano maker's craft in Canada, and the most DEPENDABLE instruments made anywhere in the world. No matter to what extremes of heat or cold they may be subjected, they stay in tune admirably and never lose their full, ever sonorous singing tone.

Another fact — You can buy the GOURLAY PIANO by mail just as satisfactorily as in person. Tell us that you want a Gourlay, and we'll select and ship according to your instructions a beautiful instrument that will please you beyond expectations. Besides we arrange

THE EASIEST PAYMENT PLANS IN THE WORLD.

WE SHIP THE GOURLAY PIANO ON APPROVAL ANYWHERE IN CANADA.

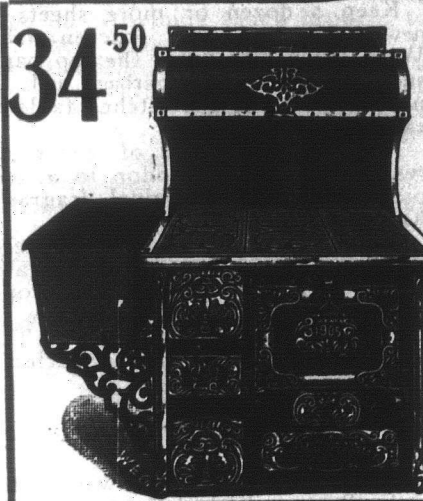
Head Office:

Gourlay, Winter Leeming

182 YONGE ST., TORONTO

Mr. Alfred A. Codd, Winnipeg Manager,

invites all interested in Pianos or Organs, from a purchase or musical standpoint to inspect the Gourlay Piano at the Winnipeg Warehouses, 279 Donald Street, WINNIPEG.

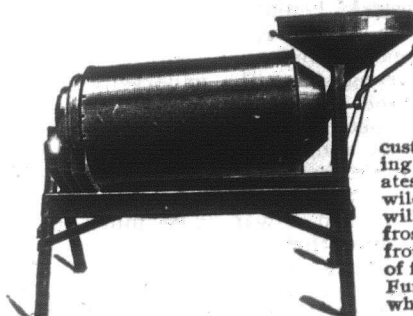


IS THE PRICE TOO LOW

For this handsome high-grade Steel Range, when the ordinary, small-sized range sells at from \$50 to \$60? This steel range is made specially for us (and bears our name), by one of the largest American Steel Range makers, that is why we are able to sell it for \$34.50. This range weighs 500 pounds, and will outwear two ordinary ranges weighing only 300 pounds each. Our \$34.50 Range has six 9 inch lids, top cooking surface 30 x 40 inches, oven 15 in. high, 20 in. wide, 21 in. deep, height of base 31 in. It will burn coal or wood equally well. The capacity of reservoir is 15 gals. It has a beautiful high-shelf warming closet. This is a range that we can highly recommend as a baker and heater, and would be an ornament to any kitchen. We guarantee that it will give perfect satisfaction, or we will refund money together with freight charges both ways. Before you buy a range from any dealer write us for Catalog and further particulars. Catalog free.

The MACDONALD MAIL ORDER LTD., Dept. M 1. WINNIPEG, CANADA.

NEW PROCESS JUMBO GRAIN CLEANER.



Capacity, 75 bushels of Wheat per hour guaranteed.

Sold on 10 days' trial; if not the fastest and most perfect grain cleaner on the market, can be returned at our expense. One machine at wholesale to first farmer ordering in each neighborhood to introduce them. Hundreds of satisfied customers in Western Canada. The only machine cleaning and bluestoning the grain at one operation. Separates wild or tame oats from wheat or barley, as well as wild buckwheat and all foul seed, and the only mill that will successfully separate barley from wheat. Separates frosted, sprouted or shrunken wheat, raising the quality from one to three grades, making a difference in price of from 5 to 15 cents per bushel. Cleanse flour perfectly. Furnished with bagger if desired. Write at once for wholesale prices.

BREMAN & CO., 127-129-131 Higgins Avenue, Winnipeg, Man.