

FIGURE No. 212 L.—
LADIES' VISITING
TOILETTE.

(For Illustration see
this Page.)

FIGURE No. 212 L.

—This illustrates a Ladies' four-gored skirt and doublecape. The skirt pattern, which is No. 7332 and costs 1s. 3d. or 30 cents, is in ten sizes for ladies from twenty to thirty-eight inches, waist measure, and may be seen in two views on page 60 of this magazine. The cape pattern, which is No. 7346 and costs 1s. or 25 cents, is in ten sizes for ladies from twenty-eight to forty-six inches, bust measure, and is differently represented on page 30. The four-gored skirt, which is here pictured made of cheviot, is one of the most attractive of the new modes, flaring in pronounced flutes at the back and sides and being made with only very slight fullness at the front and over the hips. The back is disposed in four *godet* or umbrella folds, which flare in the correct manner and are maintained in their graceful pose by an interlining of hair-cloth, and a strap tacked near the top underneath. To the bottom of the skirt is applied a unique decoration consisting of a broad band of white cloth overlaid with black soutache braid fancifully arranged.

The double cape is an exceedingly dressy garment, suitable for both young and elderly women, and is here pictured developed in biscuit covert cloth. It consists of two capes of circular shaping and unequal depth, the lower cape being shaped by a center seam and shoulder darts, and the upper cape being in two sections, which may be joined at the center of the back or left unseamed, as preferred. Both capes fall in full, rolling folds below the shoulders, and the front edges of the upper

cape are reversed to form revers that stand out broadly upon the shoulders. The lower corners of both capes may be square or

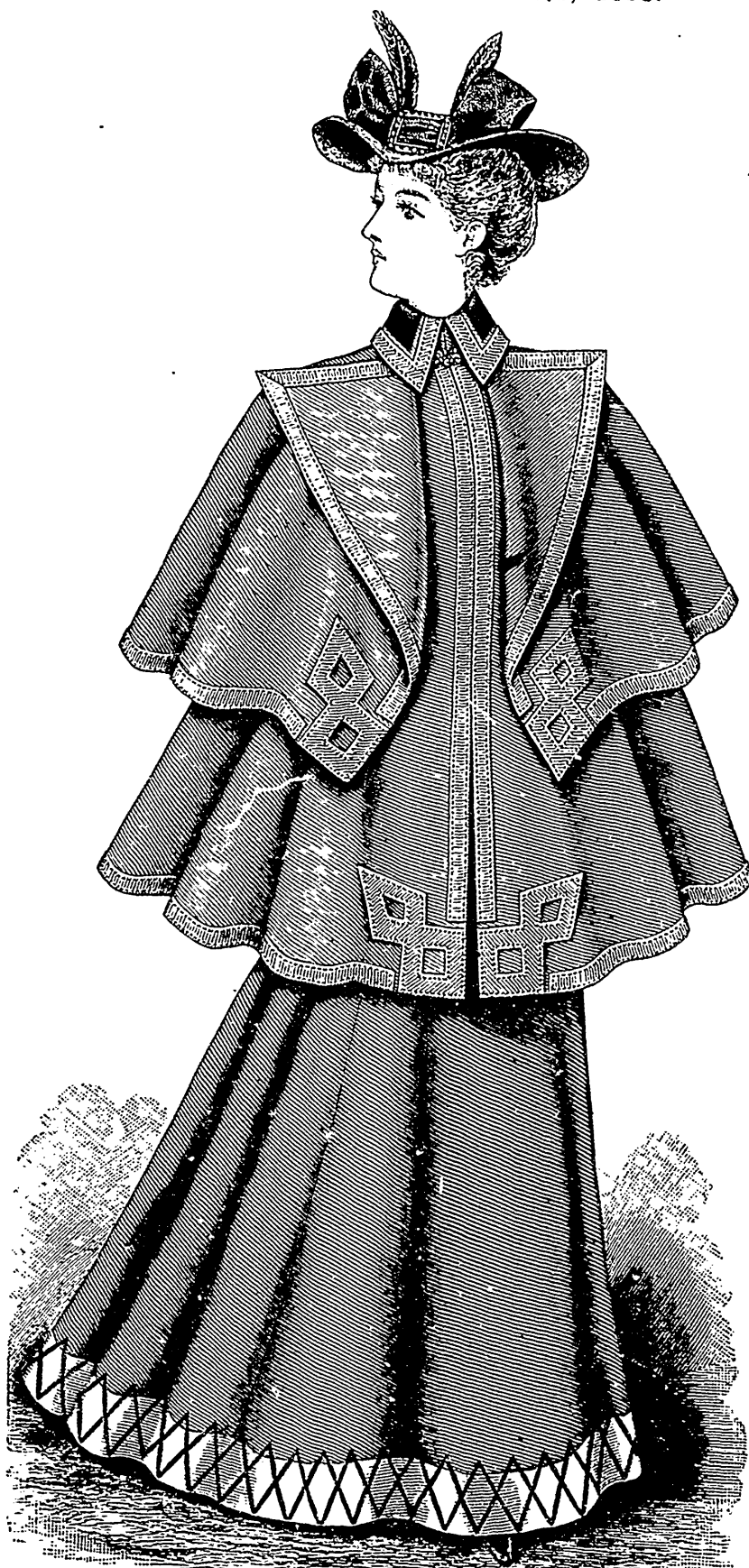


FIGURE No. 212 L.—LADIES' VISITING TOILETTE.—This consists of Ladies' Double Cape No. 7346 (copyright), price 1s. or 25 cents; and Four-Gored Skirt No. 7332 (copyright), price 1s. 3d. or 30 cents.
(For Description see this Page.)

round, as preferred, both styles being provided for by the pattern. At the neck is a deep, rolling collar mounted upon a high standing band that is closed at the throat. The rolling collar is inlaid with velvet and decorated at the edge with a band of covert cloth stitched at each edge; and between its flaring ends is revealed a fancy metal clasp which assists in the closing of the cape. The front corners of the cape are decorated with applied ornaments cut from the material and stitched along their edges, and all the free edges of the garment are followed by a band of cloth finished in a similar manner with machine-stitching.

For the promenade or for driving, a toilette of this kind will be decidedly *chic*. The skirt is adaptable to all stylish varieties of plain and fancy woollens, such as cheviot, whipcord, sacking and tailor cloth; and for the cape plain or fancy coating, faced cloth, covert cloth, heavy twilled serge, etc., may be chosen.

The large felt hat is simply adorned with velvet, quills and a jet buckle.

FIGURE No. 213 L.—
LADIES' CALLING
TOILETTE.

(For Illustration see
Page 34.)

FIGURE No. 213 L.

—This consists of a Ladies' basque-waist and circular skirt. The basque-waist pattern, which is No. 7364 and costs 1s. or 25 cents, is in thirteen sizes for ladies from twenty-eight to forty-six inches, bust measure, and is again pictured on page 51 of this publication. The skirt pattern, which is No. 7325 and costs 1s. 3d. or 30 cents, is in nine sizes for ladies from twenty to thirty-six inches, waist measure, and is shown differently developed on page 59.

The toilette is suitable for visiting, driving and other dressy wear, and is here depicted made up in an artistic combination of violet