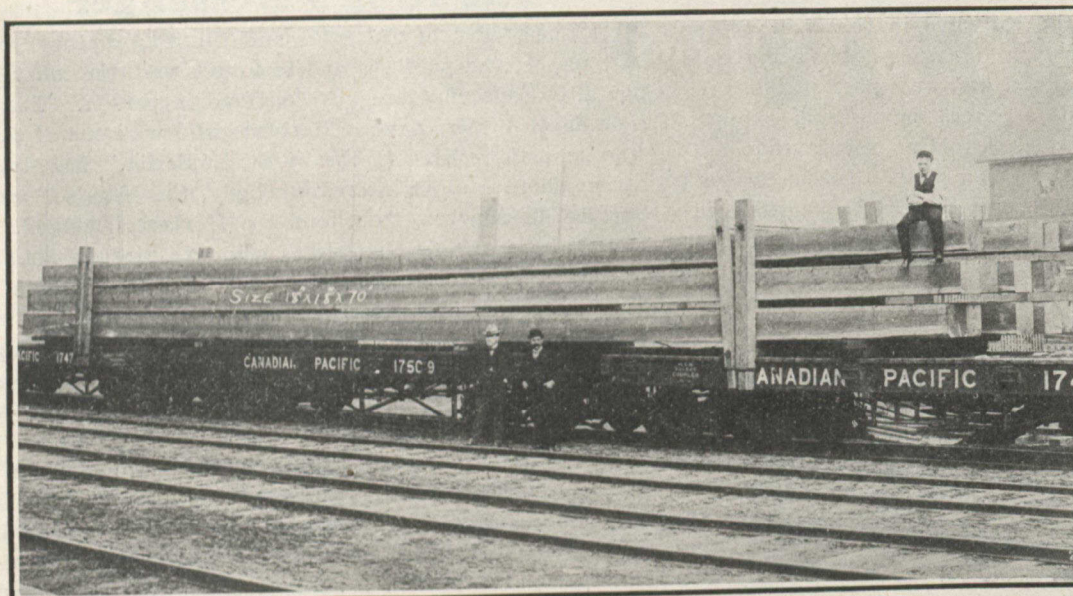
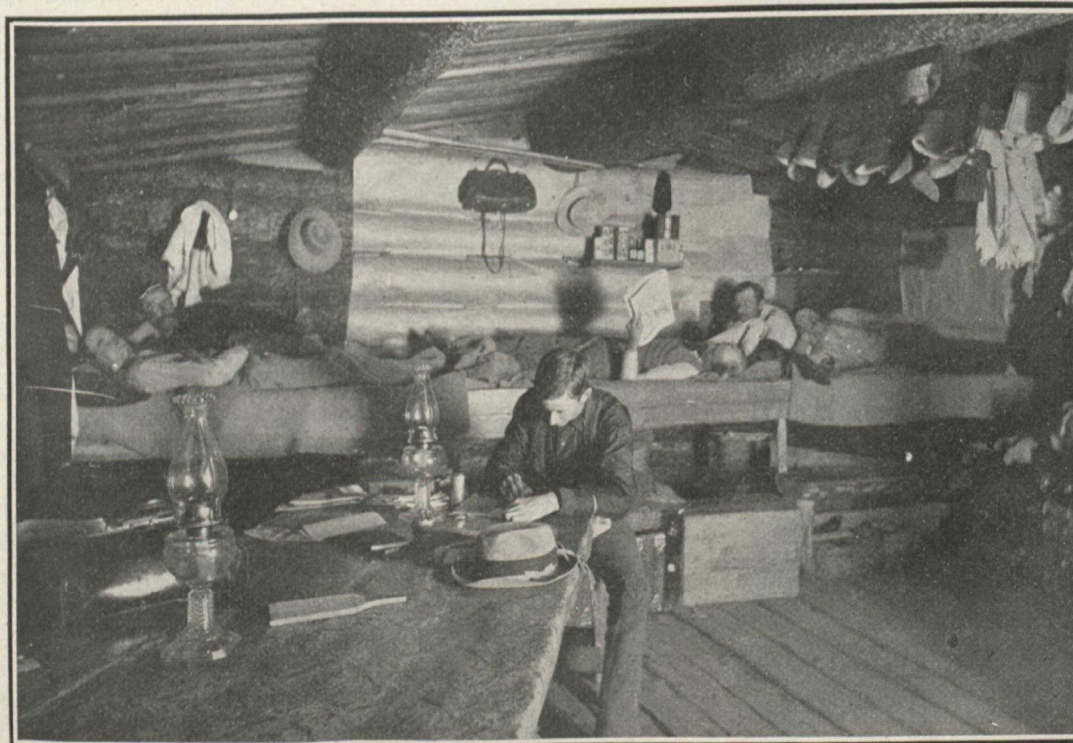




Making a skid road, over which the logs are drawn out of the bush.



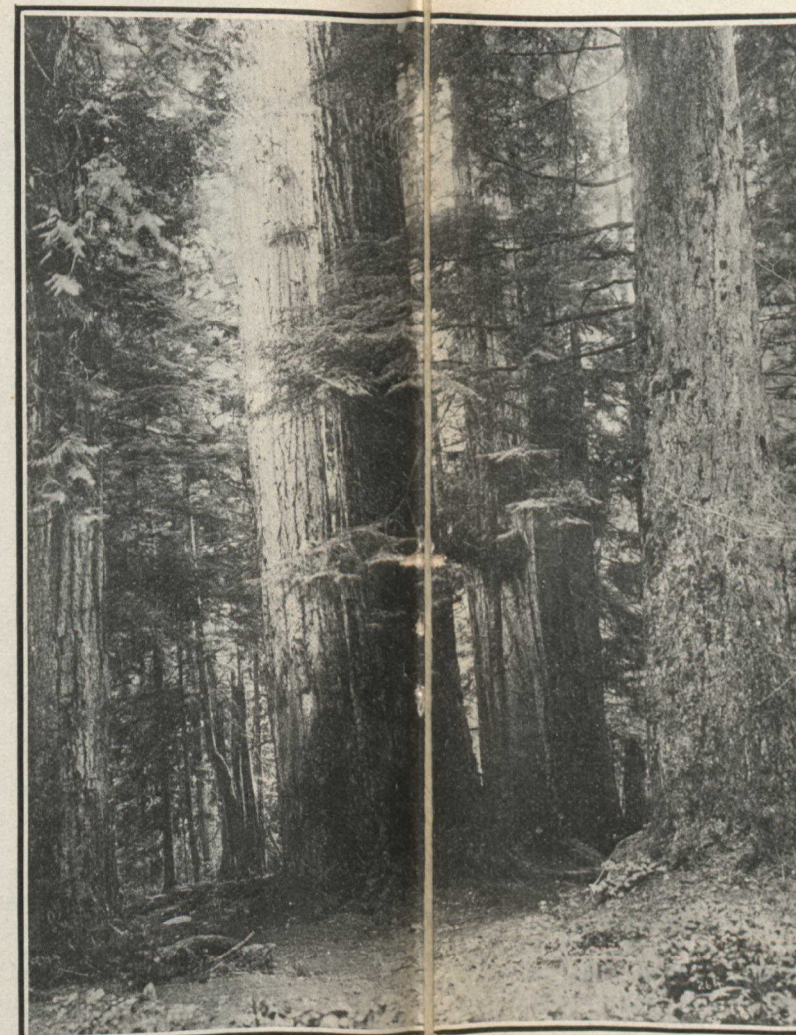
Trans-shipping square timber at Vancouver.



Interior of a Lumber Shanty. The Office.



Measuring the Butt. This picture gives a good idea of the size of the larger of the British Columbia fir trees.



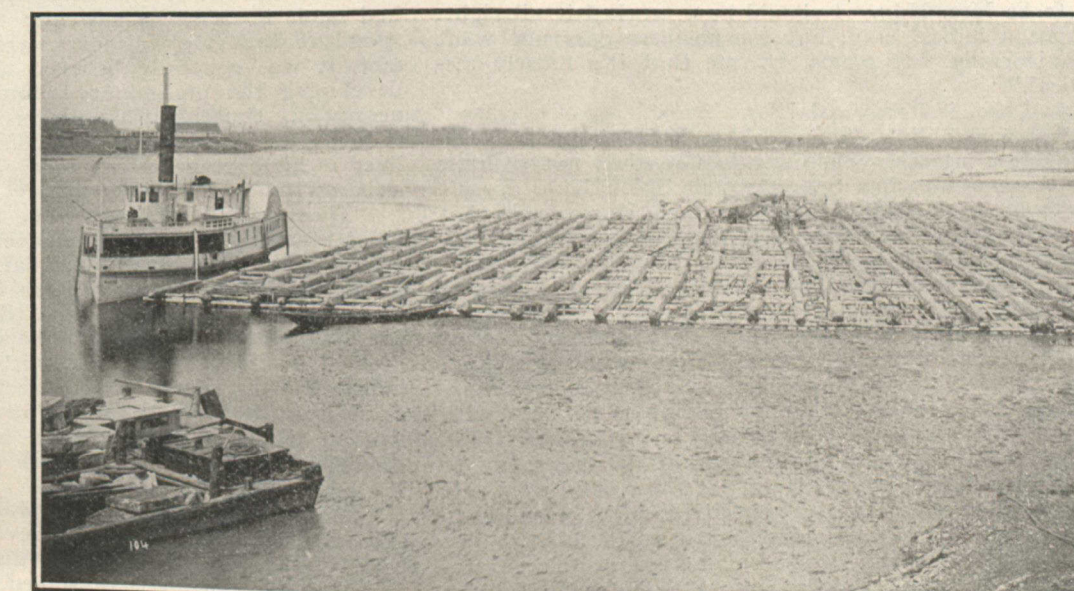
A Forest Scene in British Columbia. This picture also gives a fair idea of the size to which the trees of that Province attain.



Hauling logs over a road to the water. This used to be done by horses, but donkey engines are now used. The lower heavy cable will be from one to two miles long. The lighter cable is to draw back the heavy cable when the logs have reached the engine.



The Cook-house and the Crew of a Raft. This unusual photograph gives an idea of the life of a river-driver, and a more adequate idea of the construction of the raft which is pictured below.



A \$50,000 raft of square timber on the Ottawa River.

LUMBERING IN CANADA—STILL ONE OF THE GREAT INDUSTRIES.