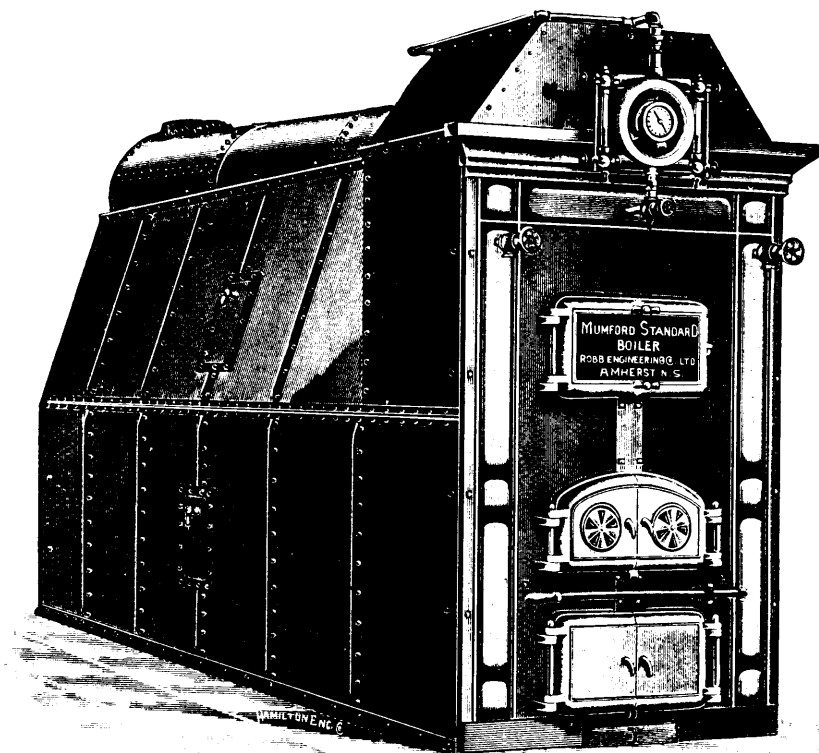


The Mumford Standard Boiler



Tests made with the same coal and under the same conditions show this boiler is more economical than a well-known water tube boiler.

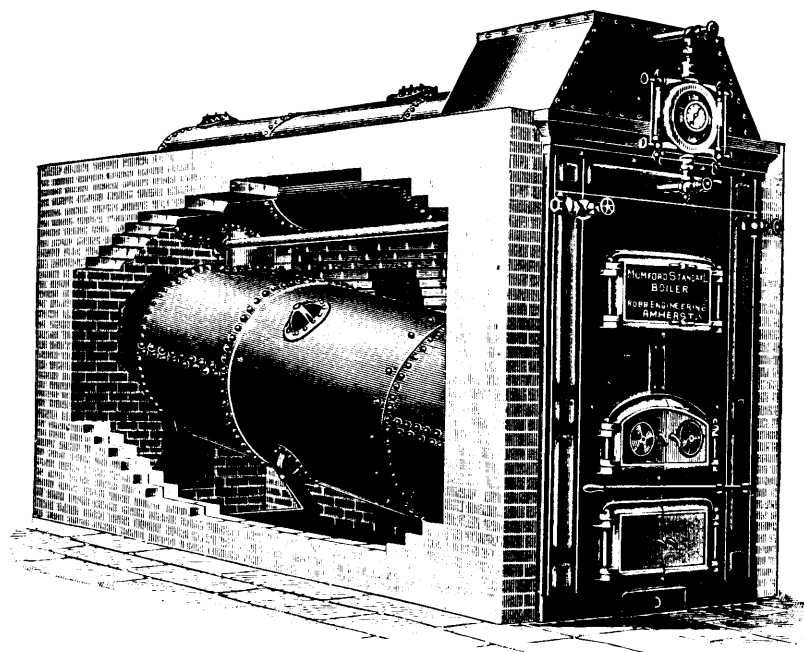
It is internally fired, which prevents any heat being wasted, and has perfect water circulation.

Two settling chambers are provided for catching deposits of scale and all parts of the boiler are accessible for cleaning.

The cased boiler is very convenient for mining districts where brick cannot be easily obtained or where the boiler is likely to be moved.

SOME USERS.

Alberta Ry. & Coal Co., Lethbridge (5)
 Lethbridge W. W. & Elec. Co., Lethbridge (2)
 McGill University, Montreal.
 Dominion Iron & Steel Co., Sydney, C.B. (11)
 Electric Station, Neepawa, Man. (2)
 Maritime Explosives Co., Dartmouth, N.S.
 Ymir Gold Mines, Nelson, B.C. (3)
 Arlington Mine, Erie, B.C.
 Electric Station, Campbellton, N.B.
 J. P. Mott & Co., Dartmouth, N.S.
 Gowans, Kent Co., Toronto.
 Canadian Rubber Co., Montreal.
 Electric Station, Fort William, Ont.
 Sydney Gas & E. L. Co., Sydney, C.B.



ROBB ENGINEERING CO., LIMITED.

AMHERST, N.S.