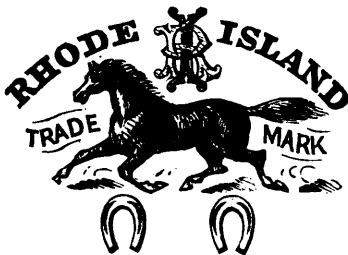


**THE DECASTRO  
SYRUP COMPANY,**  
88 KING STREET,  
MONTREAL,

Offer to the trade the following brand

Capillaire.	Sugar Loaf.
Pale Amber.	Amber.
Unexcelled Honey.	Honey
Diamond Drops.	Gilt Edge
Silver Drops.	Maple.
Extra Golden.	Golden.
Standard.	IXL Syrup in small punch'ns



We are manufacturing above celebrated make of

**HORSE SHOES,**

made from selected Wrought scrap Iron, which for general excellence, both as regards quality and uniformity, are unsurpassed.

The Rhode Island horse shoes are preferred over all others. They are used entirely by the principal Farriers and Horse Railway Companies throughout the United States.

Orders solicited, which will be promptly executed.

We also manufacture every description of Nails, Tacks, Brads, &c. Railway and Pressed Spikes.

**PILLOW, HERSEY & CO., Montreal.**



**PARTICULAR ATTENTION**

is directed to the Great Convenience of the Self-fastening

**ACME CLUB SKATE,**

(FORBES' PATENT.)

It has a world-wide reputation for quality and finish as well. Unequaled by any recent Patents. Skaters prefer the Acme to all other Styles. Adopted extensively both in Europe and America. For Sale throughout the Dominion by all respectable dealers.

MANUFACTURED BY

**STARR MANUFACTURING COMPANY,**

Address—72 BEDFORD ROW, HALIFAX, N.S.

Patent Rights Fully Secured.

Aug. 12, 1875.

**H. R. IVES & CO.,**

Manufacturers of Builders' and House Furnishing,  
HARDWARE,

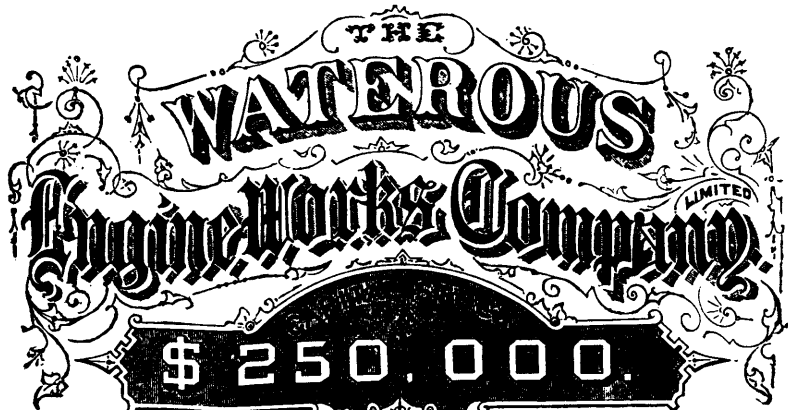
STOVES, IRON BED-STEADS, &C.



Particular attention paid to Wrought Iron Railing for Church purposes, Gates, Altar Railings, Crestings for Roofs, &c. Designs furnished on application. Work set up in any part of the Dominion. Sole manufacturers of Composite Iron Railings. Send for cuts and prices.

Castings to order.

113 to 125 Queen Street. Montreal.



**J. Cockshutt,**  
PRESIDENT.

**C.H. Waterous,**  
MECHANICAL MANAGER.

**John Fiskien,**  
VICE PRESIDENT.

**George H. Wilkes,**  
SECRETARY & TREASURER.

**SPECIALTIES**

**PORTABLE SAW MILLS.**

That will cut 2,000 feet of Lumber in a single hour.

**GRIST MILLS.**

That will grind a 100 barrels of Flour, while using only one cord of wood.

**ECONOMICAL ENGINES.**

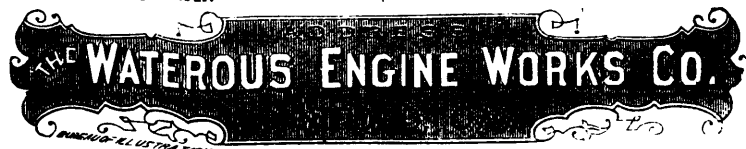
That will consume only two pounds of coal per horse power per hour.

**GEARED SAW MILLS 30 H. P., Upwards**

**CIRCULAR SAW IRONS.**

Handy, Accurate and Durable.

**ROTARY PUMPS AND WATER WORKS.**



**TORONTO SAFE WORKS**

Established 1855.

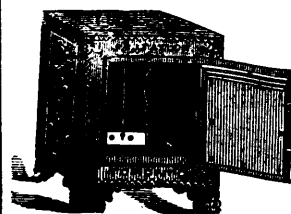
**J. & J. TAYLOR,** (Registered.)

We have had **TWENTY YEARS** experience in the manufacture of FIRE and BURGLAR PROOF SAFES, and upwards of 15,000 of our Safes and Vaults are now in use throughout the Dominion. Correspondents will please be careful to address

**J. & J. TAYLOR, Front St. East, Toronto.**

THOS. SAUNDERS.

ROBT. BAIN.



**ST. CATHARINES SAW WORKS.**

**R. H. SMITH,**

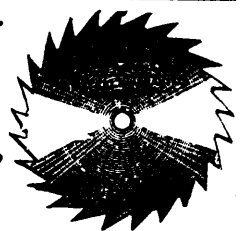
(Successor to J. Flint.)

**Manufacturer of all kinds of Saws,**

PATENT PLASTERING TROWELS, STRAW KNIVES, &c.,

ST. CATHARINES, ONT.

Sole Manufacturers of the J. FLINT Patent Improved Champion, also, the Lightning Cross Cut Saws. Hand Saws in every variety, from the cheapest to the very best.



**STURTEVANT  
Patent Pressure Blower,**

For Cupola Furnaces, Forges, Steamships, Iron Mills, Ventilation, Etc., and Exhaust Fans of all kinds for carrying off Shavings, Dust, Smoke, Gas, and other noxious fumes.

**B. F. STURTEVANT,**

Patentee and Sole Manufacturer,

72 SUDBURY STREET, BOSTON.

Send for Illustrated Catalogue?

Agent—RICE LEWIS & SON, Toronto.

