

# The Haras National Company

UNDER THE AGREEMENT WITH THE PROVINCE OF QUEBEC TO PROVIDE AGRICULTURAL SOCIETIES WITH STALLIONS.

**NORMAN, PERCHERON, BRETON AND CLYDESDALE STALLIONS**  
 PROFITABLE TERMS.—SALE OR RENT.

45 Prizes and Diplomas for 1891 and 1892 in the Provinces of Quebec, Ontario and Manitoba.

Stables at Outremont, near Montreal. Offices: 30 St. James St., Montréal.

Season of 1892: Number of services:

- Napierville: 70.—Gaspé: 107.—Missisquoi: 79.—Vaudreuil: 37.—
- Chicoutimi: 37.—Three-Rivers: 55.—Bellechasse: 59.—
- Montreal: 104.—Ottawa: 106.—Nappan: 96—
- Brandon: 39.—Indian Head: 63—
- Agassiz: 27.

Percentage of colts born in 1892 from the Haras National Stallions 70.74 %  
 Percentage of colts, 1892, Haras of Franco . . . . . 54 %  
 Percentage of colts, 1892, Haras of Germany . . . . . 53.30

**AUZIAS-TURENNE,**  
 Man. Director.



## PROPERTY FOR SALE OR TO EXCHANGE

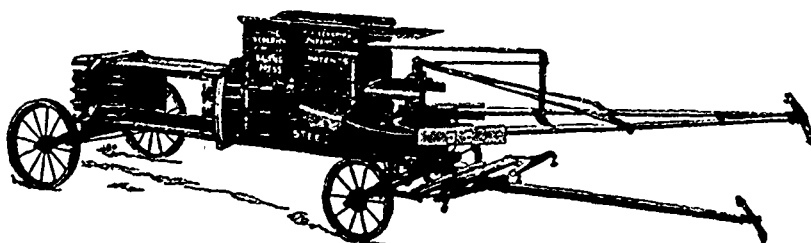
Situated in one of the finest and most salubrious localities in the island of Montreal, on the south-west part of the mountain, in the municipality of Notre-Dame-de-Toute-Grâce: containing 24,500 feet in superficies. To be given in exchange for a property lying on some well situated shore and in the neighbourhood of a railroad. For further information please address to

ALFRED DUBORD,  
 No. 1708 Notre Dame Street.

## The Huntingdon Agricultural Implement Works

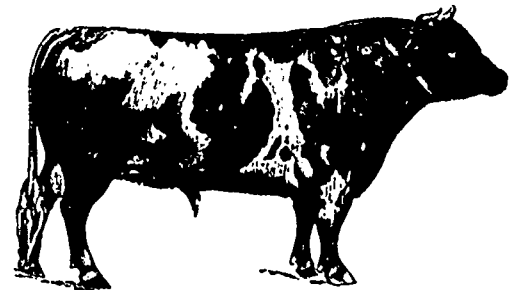
Having bought out Messrs. P. K. DEDERICK & CO'S. Branch Factory in Montreal with Plant and Stock and move to our works here. We are now prepared to Manufacture and Sell under Special Royalty

**P. K. DEDERICK'S PATENT HAY PRESSES,**  
 Made in every style in Wood Frame and Steel Cases. Also Repairs from their original Patterns.



Having also bought out the Dominion Wire Manufacturing Co's Bale Tie Plant with the transfer of that portion of their business, we are now prepared to supply all Styles of Bale Ties made from the Best Steel Wire.

**BOYD & CO.,**  
 Proprietors, Huntingdon, Que



## BEAUBIEN FARM, OUTREMONT, MONTREAL. 25 PRIZES Montreal Exhibition 1891 92

To Societies of Agriculture and Farmers desirous to improve their stock, we offer pure bred registered

**AYRSHIRE CATTLE, Bulls, Cows, Calves, all choice Stock**  
 PURE BRED REGISTERED

**BERKSHIRE AND IMPROVED CHESTER WHITE**

The Chester White is known to be invulnerable to pigs' cholera.

**Pure Bred PLYMOUTH ROCK—Improved breed COOKS, HENS, CHICKENS, EGGS.**

HOT-BED PLANTS OF ALL KINDS SHIPPED TO ORDER BY EXPRESS C. O. D.

APPLY TO **JOSEPH BEAUBIEN, 30 St. James, Montreal.**

## FOR SALE

## A SPLENDID FARM AT MONTEBELLO

COUNTY OF OTTAWA, P.Q.

At half a mile from the C. P. R. Station, distant two and a half hours from Montreal, and one and a half hour from Ottawa. This Farm consists of 200 acres of an excellent soil and contains a Barn-Stable, a Pig-Sty, Silos, a Dairy. All these buildings are in First Class condition and can compete with the best in the Province.

BESIDES.—10 Heads of Cattle (Ayrshires, Canadians and crossed). ALL GOOD MILCH-COWS. Chester White Pigs. A Stallion St. Laurent's Bred Farm Horse. Binding and Mowing Machines, &c., &c. Cream Separator. **MILK TRADE WITH MONTREAL PROSPEROUS.** Apply to

H. BOURASSA, Montebello, P.Q.

## Montreal Exposition Company

# GRAND PROVINCIAL EXHIBITION

**Agricultural and Industrial Fair**

**4th to 9th SEPTEMBER, 1893**

**MORE EXTENSIVE! MORE ATTRACTIVE!!**

## GRAND OPENING, MONDAY, 4th SEPT.

**LABOR DAY! CIVIC HOLIDAY!**

All Departments complete.

Military and other Bands.

**GREAT SHOW OF LIVE STOCK!** Horses, Cattle, Sheep, Swine, Poultry.—Machinery in motion—Agricultural, Mechanical, Industrial, Natural and Dairy Products. **GORGEOUS HORTICULTURAL SHOW!** Plants, Fruits, Flowers.

**County of Hochelaga Show in Connection!**

The IMPERIAL JAPANESE TROUPE in their unrivalled performances.—Grand Pyrotechnic Display, the BURNING OF MOSCOW!—Magnificent Fireworks.—Grand Electrical Illustrations.

H.M.S. "MOHAWK" will be in the Harbour open for inspection.

Reduced Passenger and Freight Rates.—Working Dairy Silo.—Highest Premiums.—Cheap Excursions.—Unrivalled Attractions.—New Electric Street Railway.—Cheap Fares.—Direct to Grounds.

**Open Day and Night.**

**ADMISSION - 25c.**

**S. C. STEVENSON,**

76 St. Gabriel Street, MONTREAL.

Manager and Secretary.