

NHAM LAND
ULVERIZERS

Famous where-
ever land pack-
ing is done ::

Best material; best
Dunham Company,
Western Canada



last year at double
Direct selling cost

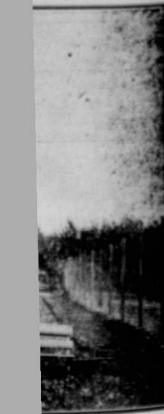
is a record maker
aker. IT'S FREE.
partment C

Winnipeg

lings
gles
ys

covered with
get our
ls.

ERS
REGINA



Willows between
John Caldwell for
an Willows, three
next spring cheap
orders direct to
factory may be
a Post Card and

NURSERIES
DEN, Man.

THEIR ADAPTABILITY TO THE WEST INSURE BIG RETURNS



EVERY DESIRABLE QUALITY

McKENZIE'S BIG CROP FIELD ROOT SEEDS

Considering the extra heavy production, their pre-eminent qualities for Sugar and the great feeding value for stock, Field Roots are unquestionably one of the MOST PROFITABLE CROPS GROWN in the WEST TODAY.

Improved Mammoth Half-Long (Short) White Carrot

Grows to a very large size and remarkable uniformity. The roots are clean, well-shaped and solid. It is an exceptionally good keeper; has great succulence and nutritiousness that makes stock relish them immensely.

Oz. 10c. 1/4 lb. 20c. 1/2 lb. 35c. 1 lb. 60c.

McKenzie's Giant Sugar Beet or Half Sugar Mangel

Its adaptability to the West makes this variety one of the most satisfactory to be had. The upper portion is of a soft bright pink, shading lighter towards the bottom, which is white. The flesh is white, firm, crisp and very sweet. It is grown entirely for stock feeding.

1/4 lb. 10c. 1/2 lb. 20c. 1 lb. 30c. 4 lbs. \$1

McKenzie's North-Western Purple Top Swede

Very large in size, yet almost free from side roots. Skin yellow, with purple top. Flesh is a nice yellowish color, fine in texture, firm, solid and mild in flavor. Like most varieties, it is not only valuable for stock feeding, but is excellent for table use.

1/4 lb. 15c. 1/2 lb. 20c. 1 lb. 35c. 4 lbs. \$1.20

McKenzie's Manitoba Giant Yellow Mangel

It is the heaviest cropper and largest of all. It grows from one to two-thirds above the surface, reaching huge proportions in size. The skin is a rich golden yellow; flesh white, firm and sweet in flavor.

1/4 lb. 12c. 1/2 lb. 20c. 1 lb. 30c. 4 lbs. \$1.10

A. E. McKENZIE Co.

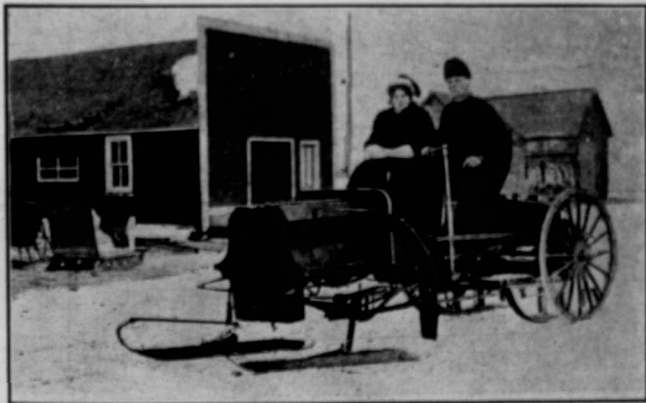
BRANDON, Man. LIMITED CALGARY, Alta.

CATALOG A Post Card will bring our Large HANDSOME SEED CATALOG

WESTERN CANADA'S GREATEST SEED HOUSE

Are You Buying an Auto?

There are a great many readers of THE GUIDE, who, like our friend in the accompanying picture and like F. W. Green, secretary of the Saskatchewan Grain Growers' Association, have made a success of their business as farmers and enjoy the luxuries of riding in automobiles. A great many more of our readers are considering the purchasing of an automobile. Many would like to investigate the proposition of buying a car. THE GUIDE is anxious to help all its readers in securing a good automobile. If any man in this country has a right to the pleasure of an automobile it certainly is the farmer who produces the wealth. We would like all our readers who



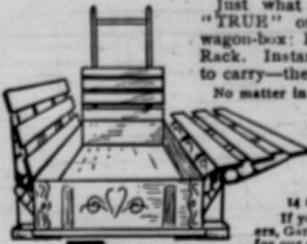
E. G. SMITH, Life Member of Weyburn, Sask., Association. His own invention.

plan to purchase an automobile or who would like to investigate the proposition, to let us know. Send in a letter stating what size car you would like to have and how much money you would care to pay for it. When we have received word from a number of our readers we will take it up with the automobile dealers. These dealers are anxious, of course, to sell their cars, and knowing that the farmers want them, they will be able to supply full information in THE GUIDE. By writing to us at once you will not only be helping yourself, but you will be helping the Grain Growers' GUIDE, the organized farmers and the automobile dealers.

We would like every farmer who owns an automobile, to send us a photo of it at once, with himself at the wheel or beside his car.

THE GRAIN GROWERS' GUIDE

"TRUE" COMBINATION WAGON BOX AND RACK



Just what every farmer needs. With the "TRUE" on his wagon he has a first-class wagon-box; Hay, Stock, Corn, Wood or Poultry Rack. Instantly adjusted for any load you want to carry—the only tools you need are your hands.

No matter in what position you put the wings, it is impossible for them to get out of that position, but it would take you but an instant to change them.

We guarantee this article to be made of nothing but the best of material—Yellow Pine, Hardwood and Malleable Iron—and to carry two tons in any position. Made in 14 and 16-ft. lengths and 38, 40 and 42-inch widths.

If you need anything in the line of Planters, Seeders, Garden Drills and Cultivators, Sprayers, etc., write for our catalog. We have dealers in your town.

THE EUREKA PLANTER CO., Limited - Woodstock, Ont.



A BOON TO FARMERS
—a fence that won't break, and a post that won't rot.
Standard Woven Wire Fence
is heavy steel wire, well galvanized, and locked with the "Tie That Binds"—our exclusive invention, which being an oval loop allows a long bend in the running wires.

STANDARD STEEL FENCE POST is No. 17 gauge steel, bent at right angle, and punched so that the fence is held secure without staples.
Lots of fence data in our book that you ought to know. Write for free copy and sample lock.

The Standard Wire Fence Co. of Woodstock Limited, Woodstock, Ont. and Brandon, Man. 15

Choice Manitoba Lands

	Per Acre	Per Acre	
N.W. 33 & E. 1/4 N.E. 32, 10.4 West	\$12.50	S.E. 23, 10.6 East	15.00
S.W. & W. 1/4 S.E. 4, 11.2 West	13.00	S.E. & W. 1/4 N.E. 10, 15.4 East	10.00
N. 1/4 N.E. 19, 10.3 West	12.00	S.W. 23, 15.3 West	15.00
N. 1/4 S.W. 18, 10.3 West	12.00	S.E. 23, 17.1 East	5.00
S.E. 23 & N. 1/4 N.E. 21, 9.6 East	6.00	S.E. 14, 15.1 West	6.00
S.E. 21, 9.6 West	6.00	E. 1/4 S.W. 30, 14.1 West	6.00
N.E. 9 & S. 1/4 S.E. 16, 8.5 West	12.00	S.W. 30, 14.4 West	6.00
S.E. & S. 1/4 N.E. 10, 9.2 West	18.00	S. 1/4 30, 13.4 West	7.00
N.W. 6, 8.1 East	25.00	S. 1/4 31, 13.4 West	6.00
N.E. 8 & S. 1/4 N.W. 4, 8.1 East	25.00	E. 1/4 & S. 1/4 S.E. 22, 17.4 West	5.00
S.W. & S. 1/4 N.W. 14, 5.2 East	13.00	S.E. 6, 15.13 West	10.00
S.E. 16 & N. 1/4 N.E. 9, 4.2 East	12.50	All 15, 7.1 East	22.00
S.E. 33, 3.2 East	12.50	S.E. 35 & S. 1/4 S.W. 36, 9.7 West	4.00
S.E. 12 & N. 1/4 N.E. 1, 3.4 East	12.50	N.W. & W. 1/4 N.E. 50, 10.7 West	4.00
S.E. & S. 1/4 N.E. 6, 8.5 East	10.00	Prac. 36, 10.8 West	4.00
N.E. & N. 1/4 S.E. 22, 9.5 East	10.00	N.W. 24 & N. 1/4 N.E. 23, 9.8 West	4.00
N.E. 12 & S. 1/4 S.E. 15, 11.6 East	15.00		

To Close out an estate we offer the above choice lands at very low prices. Apply:—

AIKINS & PEPLER
WINNIPEG