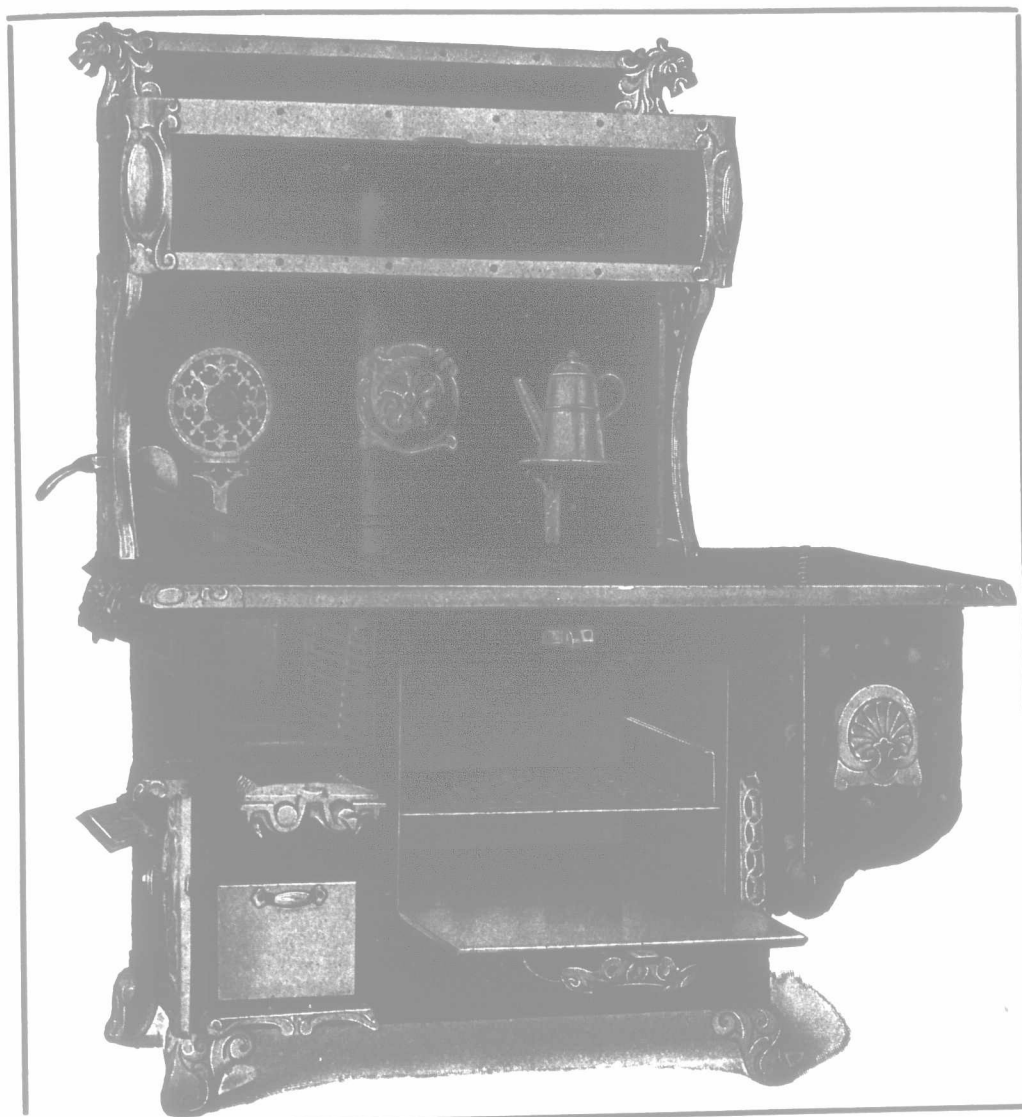


THE UNIVERSAL FAVORITE



Is a High-class Family Steel Range, honorably built of the best material, and put together as tight as a steam boiler, and is guaranteed to cook and bake perfectly.

NOTE

The spacious firebox for wood.
The large firebox opening, $7\frac{1}{2} \times 8\frac{1}{2}$ inches.
The roomy square oven.
The top-hinged key plate.
Also note how easily the coal grates can be removed.

The linings can be changed from coal to wood, or vice versa, without the disturbing of a bolt.

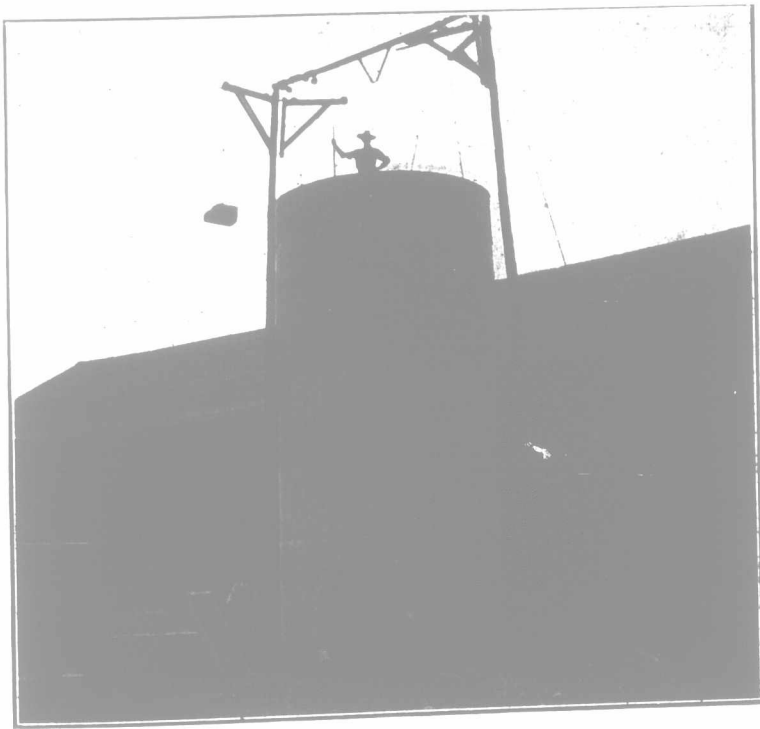
This Range is made of heavy British Cold-rolled, Non-corrosive Polished Steel. It never needs black-leading, only an occasional light rub with a cloth will keep it clean and bright.

Lots of room on the top and in the oven to do the busy morning's work.

There are thousands of these Ranges in the homes of the best farmers in the country giving absolute satisfaction.

FOR SALE BY ALL LEADING DEALERS.

Findlay Bros. Co., Ltd.,
CARLETON PLACE, ONTARIO.



CONCRETE SILO under course of erection with the

London Adjustable Patent Silo Curbs

We have Two Hundred and Fifty sets of Silo Curbs in operation. Over Three Thousand Concrete Silos have already been erected. A Concrete Silo will pay for itself in two years. **The London Adjustable Silo Curbs** will pay for themselves in the erection of two silos.

We are also the only manufacturers of

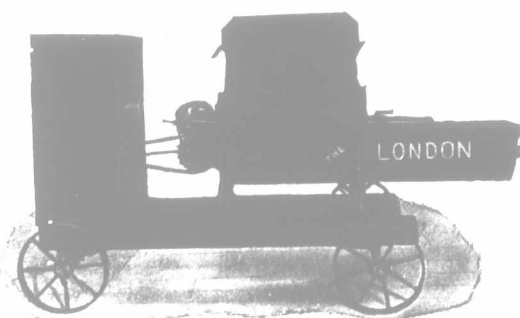
The Concrete Silo Block Machine

which makes the **sealed air-tight Concrete Block Silo** commanding so much attention.

Our Catalogue tells all about both types of silos.

London Automatic Batch Mixer No. 1

Capacity, 50 yards per day.
Price, complete, as shown, with power, \$295.00.



More of these Mixers have been sold in Canada the past year than all other mixers combined. If you mix concrete you should read our Catalogue. This Machine will **save the price of itself in thirty days.** Can you afford to be without it?

We also have other types of Mixers and a full line of Concrete Machinery and Cement-working Tools. We also manufacture the **LONDON CONCRETE MACHINERY CO. GASOLINE ENGINE.** One of the most suitable engines on the market for farm work, or for any class of work where the engine is exposed to much dust or dirt.

THE LONDON POWER DRAIN TILE MACHINE, for making Cement Drain Tile, is the latest invention. Ask us about it.

LONDON CONCRETE MACHINERY CO., Ltd, 19 Marmora St., London, Can.

The Largest Manufacturers of Concrete Machinery in Canada.

MANITOBA BRANCH:
W. H. Rosevear, Agent, 52 1/2 Princess St., Winnipeg, Man.

AGENTS FOR BRITISH COLUMBIA:
A. G. Brown & Co., 1048 Westminister Ave., Vancouver, B. C.