

Elementary principals re-shuffled

Eighteen elementary school principals have been appointed by Peel County Board of Education.

The announcement was made last week.

Donald A. Chivers, a mathematics graduate of McMaster University, Hamilton, and Buffalo State University, has been appointed principal of Ellengale Public School, Mississauga.

George Shannon, a psychology graduate of McMaster and former acting principal at Lakeview Park, becomes principal of Lakeview Park school at Port Credit.

David A. Ramsey, vice-principal of Havenwood, is new principal of Thornlodge, Mississauga.

Russell F. Moore, vice-president at Westwood, has been named principal of Owenwood Public School, Port Credit.

Barry A. Fendley, vice-principal, Glendale, Brampton, moves to the principal's spot at Orchard Heights, Port Credit.

Noel A. Churchman, vice-principal, Tomken Road, is named principal at Malton.

Daniel D. Lysack, principal of Sherway Drive, Mississauga, becomes principal at Agnes Taylor, Brampton.

Audrey W. Baird, principal of Ellengale, moves to a similar spot at Corliss, Malton.

Paul Cowan, principal at Owenwood, Port Credit, has been named principal of Springfield, Mississauga.

T. Lloyd Pike, principal, Orchard Heights, becomes principal at Westacres, Mississauga.

George F. Wright, Westacres principal, will be principal at the new Cherryhill Public School, Mississauga.

James L. Hicks, principal, Malton, moves to Birchbank, Bramalea.

Gerald E. Dale, principal at Balmoral, moves to Clark Boulevard, Bramalea.

Donald B. Ritchie, vice-

principal, Elmcrest, moves to Sherway Drive, Mississauga.

C. John Ravenhill, former principal at Lakeview Park is named principal of Homelands Senior Public School, Clarkson.

Alexander W. McLaughlin, principal, Anges Taylor, Brampton, becomes principal at Folkstone, Brampton.

Ross W. Thompson, principal, Clark Boulevard, moves to Balmoral.

Bos asks for open workshops

Trustee Rudy Bos of the Peel County Board of Education recommended last week that the board take definite steps to help students find something to do this summer.

Mr. Bos read a recommendation to the board at last week's meeting in which he stated, "Many students are going to be idle this summer. With nothing to do, the students are left to find employment on their own, or do whatever they want. Many want jobs and can't find them.

"I think the board should take steps to curb this idleness by opening the

school workshops to students who wish to work in them during the summer. They could be supervised by adults from the community who are interested in helping the young people."

It is not yet known if the board will consider the proposal.

Low school must come 1.5 ft. up to standard

The Peel County Board of Education has decided to withhold an extra expenditure of \$8,868 charged by the contractor for Dolphin Senior Public School to raise the school to its proper level.

The problem came about due to a surveyor's error in establishing contour levels

The error was 1.6 feet in elevation which caused the foundation to be laid 1 1/2 feet below its proper level.

The cost of raising the school was confirmed by the architect at \$8,868.

It is not known exactly who is likely to pay the extra cost.

Four injuries this week

PORT CREDIT — The Port Credit detachment of the OPP investigated 26 accidents during the week of May 18 to May 24.

Of these, 22 were property damage accidents costing \$9840, and four were personal injury accidents, with four injuries recorded.

Fifteen accident charges were laid.

EFFECTIVE SPEED READING WILL BE OFFERED AT

SHERIDAN COLLEGE SCHOOL OF DESIGN
1460 SOUTH SHERIDAN WAY
PORT CREDIT

AND
SHERIDAN COLLEGE, BRAMPTON CAMPUS
98 CHURCH STREET EAST

DAYTIME COURSES

Beginning July 7-July 18

July 21 — August 1
August 4 — August 15
August 18 — August 29
TIME: 2:00 — 4:00 p.m.

EVENING COURSES

Beginning July 8-August 1
August 4-August 28
Time: 7:00 p.m. - 10:00 p.m.

FEE: \$20.00

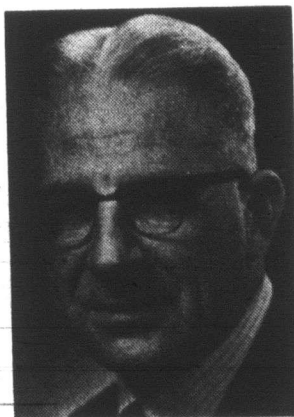
REGISTRATION PLEASE CONTACT
Director of Extension
Sheridan College
98 Church Street East
BRAMPTON, Ontario

Brampton
459-7533

Toronto 364-7491
Ext. 57 or 58

Harry Pridgeon wants to meet you! In his brand-new branch at Dundas & Highway 10

(formerly Cooksville Branch)



Harry Pridgeon

You'll like our new office at Dundas & Highway 10 . . . attractive, modern decor and the latest in furniture and fittings . . . but you'll like even better our new approach to banking. Manager, Harry Pridgeon, and all of his staff believe in to-day's kind of banking for today's kind of people. This means more than a brand-new building or complete services. It means we like to look after you. Do drop in for a visit . . . you'll find we're approachable.

You are invited to an OPEN HOUSE

light refreshments will be served and Manager Harry Pridgeon and members of his staff will be on hand to welcome you.

6-9 p.m., Thursday, June 5th.



ROYAL BANK

RENAULT 8



THE "SURPRISE" CAR WITH ALL THE OPTIONS AS STANDARD EQUIPMENT, PLUS ECONOMY!

AS LOW AS . . . **\$1868.00**

(Automatic slightly extra)

RIFLE RANGE MOTORS

1019 LAKESHORE ROAD EAST

Just West of Dixie Rd. at Ogden Ave. Port Credit

TOP LIST TOP \$ TODAY! \$ MOVE TOMORROW! TOP DOLLARS—FAST ACTION
10 Salesmen to serve you
Call
BRAMALEA REALTY LTD.
Bramalea Rd. & Clark Blvd.
677-7110