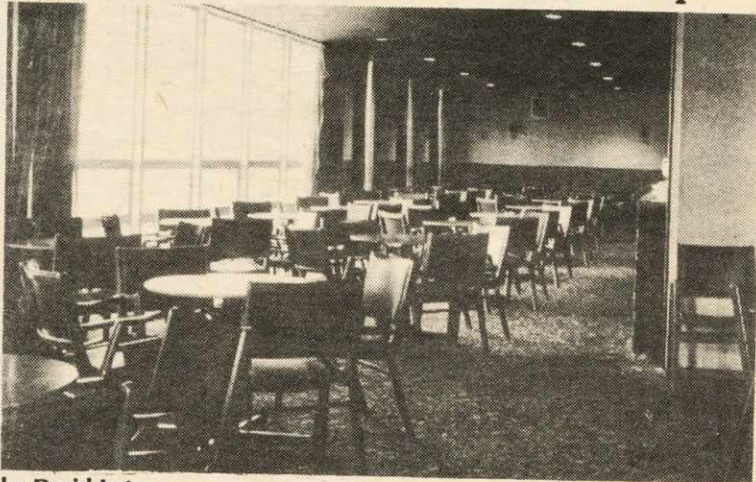


Grawood to take on competitive look



by David Lutz

Revenues are down at Bar Services but plans are being laid for a more competitive Grawood.

DSU Treasurer Shawn Houlihan said real profits for Bar Services will fall up to \$8,000 short of the \$28,000 projected for this fiscal year. But given Bar Services budgetary expenditures of \$600,000, such a drop is not extraordinary.

"Where we make money," said Bar Services Manager Tim Purtis, "is on the special functions and other services we provide through Bar Services. Super-sub, outside groups and the like bring us 75 per cent of our prof-

its. The other 25 per cent comes from the Grawood. The low overhead and high sales which these one-time events provide are designed more for profits, as opposed to the day-to-day operations of the Grawood."

Bar Services, and the Grawood in particular, are organized as student services so there is no expectation of high profits. "We mark-up prices 60 per cent, which is the minimum needed to cover our own expenses. If we wanted to make the 200 to 300 per cent mark-up some of the downtown bars make we would obviously be able to make much

larger profits," said Bar Services Assistant Manager Drew Taylor.

"The problem is that the Grawood and Bar Services are not selling as much as was hoped. With the volume of sales down the net profit has to be down," said Houlihan.

Taylor said, "Students are drawn more to the downtown scene than to the campus.

"Five years ago the choice of places for students to drink downtown was much more limited than it is today. The Grawood was much more popular back then. It would often be full from Thursday to Saturday and have pretty good crowds the other three nights," he said.

Whatever the reason for revenues dropping, management has been considering various ways to make the Grawood more competitive. Bands have been booked at the Grawood this term as an experiment to "see what kinds of crowds we can draw throughout the week."

"The revenues from Thursday nights and Friday afternoons more than make up for anything we might lose on a group Monday through Thursday," said Taylor. "And we're giving the students an alternate place to see

Bar Services on the rocks

something they might pay a lot more for downtown."

Another possible consideration is new furniture for the Grawood. "It needs replacing soon anyway," said Purtis. Some of the tables and chairs may be replaced by higher tables and stools. This is expected to give

more floor space as well as being more appealing.

"The initial outlay for any change like this would come from council but since any profits Bar Services makes go to council anyway, it would make sense to go with the best improvement," said Houlihan.

Council proposes \$30,000 Tupper lounge!

by Steve MacDonald

In response to concerns that Lower Campus students are being neglected, Dalhousie Student Union Council adopted a motion on Sunday which, if accepted by the Health Professions Students, would see the establishment of a \$30,000 lounge in the Sir Charles Tupper Building.

Although the Student Union Building facilities are designed to serve all Dal students the distances between the Tupper Building and the SUB have made it inconvenient for Lower Campus students to use it.

Objections have been raised that the Council's financing of the lounge might be perceived as

giving special consideration to Medical students. But in making his case before Council, DSU President Tim Hill said, "We don't do enough for Lower Campus students." He added that the lounge was not exclusive to Health Professions Students but was designated as a common area for all Dal students.

Dalhousie Student Union Treasurer Shaun Houlihan stressed that the lounge would be financed by a non-SUB capital expense fund and would therefore not interfere with the SUB's operating budget. Health Professions students will also be charged an extra dollar annually to meet the depreciation costs of the lounge.

fear and loathing; Elections '84

by the elections committee

They are out there. The candidates. You may not know it, but you soon will, the Dalhousie Student Union elections are coming. Soon candidates will be knocking at your door or pushing pieces of paper into your hand to tell you why you should vote for them.

We will be attempting to provide you with a blow by blow account of the campaign, and to give you our impressions of the candidates. Our analysis may not be "fair", it may not be "objective", but we hope it will be entertaining and informed.

Too often the electorate is at the mercy of the candidates' information, misinformation, or total lack of information. We hope to change this by bringing you the most detailed coverage of the candidates and issues ever offered in the pages of the Gazette.

Issues. Why bother to vote? Because you get the kind of student government you vote for. Student government affects you on a number of levels, whether you realize it or not. Are you concerned about the tuition fees at Dal, Student Aid, summer job prospects for students, student services, entertainment, orientation, or the quality of academic programs? Student council can influence all of these things and more. Or it can leave them the same.

Another issue, school spirit, is a part of every campaign. The problem is distinguishing between different versions of school spirit. Is it possible to make Dalhousie a community, and how can this be done?



In this campaign you will be asked to decide between serious candidates and joke candidates, or serious candidates pretending to be joke candidates, and joke candidates masquerading as serious ones. Your vote will determine which style of student leadership you get.

The Candidates. At the time of writing the nominations for President and Vice-president are still open. But candidates have already emerged from the broken promises, temporary alliances, treachery, and character assassinations which usually precede any election.

We understand that Geoff Martin (a Gazette reporter) and Jim Warner (a counsellor on

Senate) have teamed up. Rusty James (of Rusty and Dave) and Alex Gigeroff (an English student of ambiguous repute) are close to announcing their candidacy also. This was made possible by the dropping of Neil Ferguson (a popular man about Law School and residence), who was to have run with Rusty. It is also rumoured that Alex Gigeroff was originally intending to run with another candidate.

In addition to these teams we suspect Ernie Romans (Psychology) and John Blasko (Math) may also be running, as well as a team of Steve MacDonald (president of Zeta Psi) and Grant Machum (Commerce).

However, there are many others who shouldn't be counted

out just yet. One big question is whether Tim Hill (President) will run again. Other possible contenders from the current executive are Caroline Zayid (Community Affairs) and Jill Allen (Vice-president Academic). In addition to these we may yet see late nominations coming in for either John Rhude (graduate rep), Frank Dunn (graduate rep), Phil Barnstead (Science rep), Gary Zed (Howe Hall president), or Donald McInnes (Senator). And no doubt there are other people, who we haven't even heard of, still toying with the idea of running for election.

Kingmakers and backroom boys. In any election there are influential people. People who can and do advise others how to vote.

People who will be listened to. These include current councillors and presidents and vice-presidents of societies. Many of the teams will attempt to recruit these people into their campaign team, either for support or information. Obviously, it is useful to have a member of the current DSU executive on your side; they are an invaluable source of rumour, information, and advice since they have usually fought campaigns before.

Apart from Tim Hill, Susan MacIntyre, Atul Sharma, Shawn Houlihan, Caroline Zayid, Karl Nightingale, Jill Allen and Christine Woods the people to watch for would be Gary Zed (president of Howe Hall), Lynn Kennedy (president of Shirreff Hall), Reza Rizvi (for his connections with the Science Society, Student Council, and International Students), Keith Tufts (manager of CKDU) and Liz Bedell (president of the Dalhousie Association of Graduate Students). These people, together with the presidents and vice-presidents of societies, the student councillors and other local "heroes" will be seriously considering who they will support. We intend to observe how these people react as the campaign unfolds.

Survey. In the next edition of the Gazette we will be publishing statistics from an informal poll of various people who may or may not be kingmakers or backroom boys. We are withholding this information until the nominations close so as not to "artificially" influence potential candidates' decisions about running for election.