



FIGURE NO. 1.—LADIES' TURBAN.



FIGURE NO. 2.—YOUNG LADIES' FELT HAT.



FIGURE NO. 3.—LADIES' HAT.

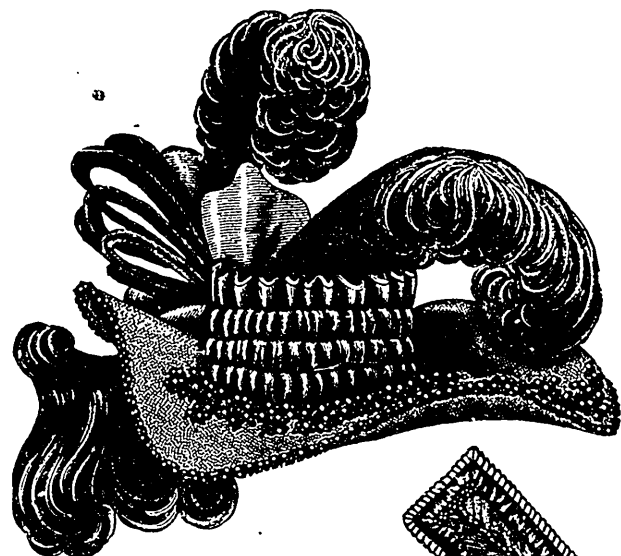


FIGURE NO. 4.—LADIES' LARGE HAT.



FIGURE NO. 5.—LADIES' RECEPTION HAT.



FIGURE NO. 6.—LADIES' WALKING HAT.



FIGURE NO. 7.—YOUNG LADIES' TOQUE.

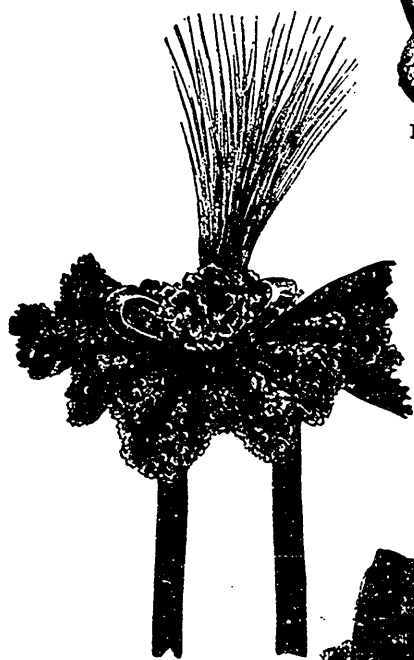


FIGURE NO. 8.—LADIES' EVENING HAT.

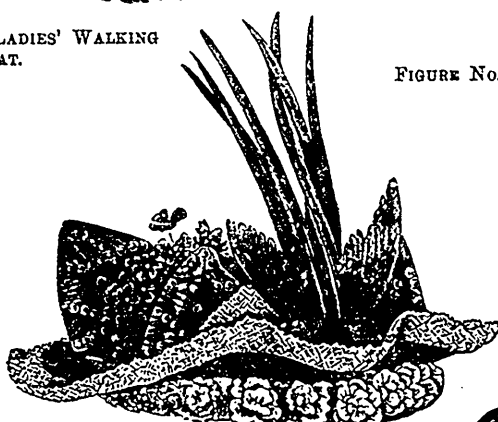


FIGURE NO. 10.—Back View.

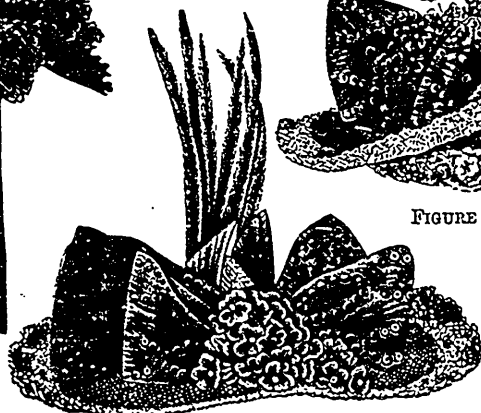


FIGURE NO. 9.—Front View.



FIGURE NO. 11.—LADIES' SMALL HAT.

FIGURES NOS. 9 AND 10.—LADIES' LARGE HAT.
FASHIONABLE HATS.—(For Descriptions see Pages 464 and 465.)