

Santa Claus Holds Receptions as usual 9 to 11 a. m. and 2 to 4 p. m.

EATON'S DAILY STORE NEWS

Store Opens at 8.30 a.m. and Closes at 5 p.m.

Three Big Clearances of Men's Suits Monday

\$6.35

\$11.75

\$14.75

Comprising Smart Winter Weight Suits for Business Men and Young Men and Strong, Serviceable Tweed Suits for Workingmen

HERE ARE three extraordinary suit offerings—all different, each appealing to a different class of men, yet all offering unusual savings, in most cases dollars, that should attract a large crowd of men to the store early Monday.

The first assortment consists of strong, neatly tailored tweed suits for workmen. Ideal to wear underneath overalls or to slip on to wear to and from work. They are three-piece suits in single-breasted, three-button sack style, with medium lapels and flap pockets. In checks or stripes in brown, of medium or dark shades. Sizes 36 to 44. Extraordinarily low priced. Monday **\$6.35.**

The second lot are young men's suits selected from stock and reduced dollars for clearance. They comprise the smart youthful, neat styles that young men prefer, and are tailored excellently of handsome good wearing materials. Two and three-button sack models included, some with patch, others with flap pocket, medium width, notched lapels and smart fitting bodies. Vests button high and some have collar. Trousers are straight and have cuff bottoms. Made of serviceable tweeds in brown, grey, black and white, and golden mixtures, checks and narrow stripes, etc. All lined with fine twill. Sizes 32 to 38. Dollars reduced Monday **11.75**

The third offering consists of men's suits of excellent quality tweed. Their low price is due to a fortunate cash purchase of a manufacturer's overmakes. They are winterweight suits in rich dark grey cheviot finishes, in self shades, grey mixtures, small checks, brown with red thread stripes in worsted finish, greys in pick-and-pick patterns, and browns in small checks. Beautifully tailored in conservative 3-button sack style, and with a dressy and refined appearance that you'd expect to find in higher priced suits. Sizes 36 to 44. Clearing Monday **14.75**

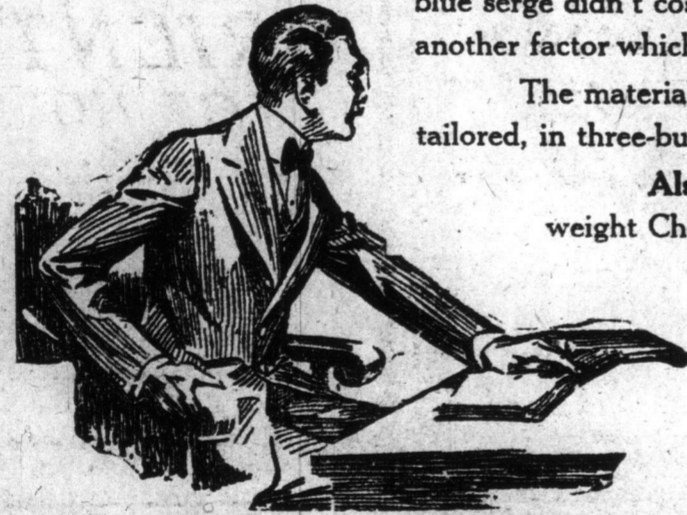
Of Interest, Too, Are These Low Prices of Navy Blue Suits

THESE NAVY BLUE WORSTED SERGE SUITS are remarkably good values, the materials being purchased many months ago, when blue serge didn't cost as much as it does today. They have been designed and tailored in our own workrooms, too, another factor which keeps the price low.

The material is a warm winter-weight dressy blue that will give surprisingly good service. Conservatively tailored, in three-button sack style, with medium width lapels. Sizes 36 to 44. Price **10.00**

Also extremely good values are Men's Navy Blue Serge Suits at **\$17.00.** These are made of winter-weight Cheviot-finished navy blue serge, and are smartly tailored. For young men the coats have 2 buttons, soft rolling lapels and rather form-fitting waists. Trousers are straight and have cuff bottoms. For men of more mature years, this same line is available in 3-button sack style, with peaked lapels and naturally formed shoulders. All are expertly tailored and finished in every detail. Sizes 33 to 38, Men's 36 to 44. Price **17.00**

Men's Navy Blue Suits, of soft finished English twill serge. These are 3-button sack style, with a fashionable appearance. All lined with twill mohair. Price **22.50**



Boys' Brown Nap Overcoats in Early Special Clearance, Monday at \$2.95

100 coats of such good quality and at such a price should not last much longer than one hour after store opening. They are of a soft brown nap, finished something like chin-chilla and are double-breasted style, fasten snugly up to the chin, and have close fitting self collars. They also have belt all round at waist, and warm flannelette linings. Sizes to fit 3 to 8 years. Early special Monday **2.95**



Winter Overcoats for Large Boys.

Heavy, Rough Finished Tweed Slip-on Coats, all in mottled patterns of grey or brown. Double-breasted style, with convertible lapels, full swagger back, and split sleeves, slash pockets, heavy twill linings. Sizes 26 to 28. Price **\$ 9.00**
Sizes 29 to 34. Price **\$10.00**

Boys' Ulsters in grey or brown diagonal or herringbone weaves, in good weight materials; double-breasted style, with convertible collar and two-piece belt at back. Lined throughout. Sizes 32 to 49. Price **\$7.50**

—Main floor, James St.

A Christmas Display of Men's Bathrobes

A BIG long blanket bath robe would make a splendid gift for any man. It's a useful garment to slip on for chilly mornings; to wear coming to and fro from bathroom or to keep comfortable while sitting in the bedroom, reading.

Fashioned of warm blanket cloth materials in a great variety of pleasing patterns and colors, the display on the main floor includes them from \$5 to \$15. A few suggestions:

One, made of strong, heavy blanket cloth, has stripes of floral designs in brown and navy, brown and red, grey and white, or blue and green. Have turn-down collar, with tie string, two pockets and girdle. Sizes 34 to 44. Each **5.00**
In fancy stripes and conventional designs, is another line, with large roll collar, two pockets, buttoned front and girdle at waist. In colors of green and fawn, fawn and grey, green and rose, grey and red, etc. Sizes 34 to 46. Price **6.50**

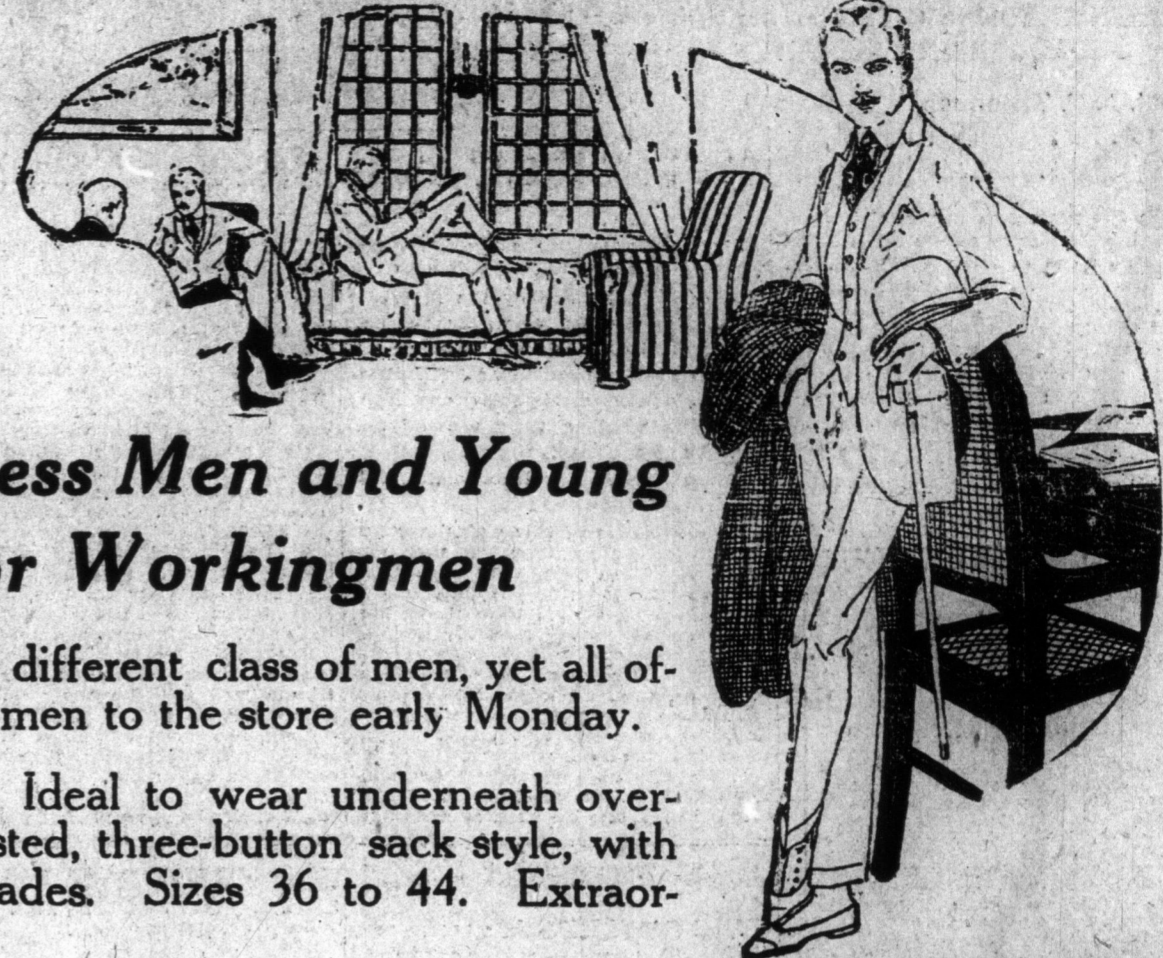
Made of fine figured worsted cloths are some very beautiful Bathrobes, in plain navy with tan collar, cuffs and pocket. Have big roll collar, two patch pockets, corded edges and heavy girdle at waist. Sizes 36 to 42. Price **15.00**

Other Gift Suggestions for Men

Men's Knitted Mufflers, in honeycomb or accordeon weaves, with fringed ends. Light or dark grey, or white; also black and white, green and black, or brown and blue; in fancy gift box. Each **.59**
Made of fancy silks are Men's Mufflers, in fancy figured, floral and Paisley designs, with bordered ends. Colors, green and black, gold and black, gold and navy, brown and gold, or sky and gold. In fancy gift box. Price **2.50**
Men's Silk Neckties, with figured, brocaded, stripe patterns. Large shapes, with wide ends, and thin, strong neckbands. Grey, brown, red, helio, green, mauve or navy. Each **.50**



—Main Floor, Centre.



Here and There in the Store

A horse standing, whether in stable or in the street, should be blanketed. Not only is it humane, but a warm horse gets more nourishment out of his food, and it's therefore economical on his oats and hay. It also keeps his coat sleek and easier to groom.

A Heavy Wool Blanket in the Harness Department in Basement is very durable and warm. It is a neat check pattern, dark brown with yellow and red stripes; strap and buckle at breast. Size 72 x 72. Price, each **5.75**

Beaver board is a wood fibre wall board that can be used instead of lath and plaster. It is wood in fibrous form, pressed into panels about 3-16 inch thick. It has a pebbled surface, which permits soft color effects and allows a variety of original and artistic methods of decoration. In new rooms beaver board is nailed to the studs and headers of walls and ceiling, the interstices between the panels being covered with decorative strips of wood. Beaver board can be used in homes, stores, offices, public buildings, factories, and it can be quickly and economically made into boots for Christmas bazaars, etc., and its possibilities are great when used as a window background or trim. Obtainable in sheets 32 and 48 inches wide and 6, 7, 8, 9, and 10 feet long. —Fourth Floor.

In the Christmas Bazaar on the Fifth Floor is a display of Japanese "Mystery Boxes" that are really fascinating and puzzling. Some of them are banks, others are receptacles for trinkets or small treasures of any kind. But all are most interestingly modeled in the form of books, pianos, light-houses, pagodas, etc., with a "secret" opening like the hidden drawers they used to have in old-fashioned writing desks. Instead of locking or unlocking them in the ordinary, commonplace manner, you must push a certain panel, press a special spring or shove back an unsuspected-looking cross-bar and off comes the lid or back flies the door. They are beautifully made of Japanese woods, and are clever as can be. Prices run from 25 cents upward.

To produce the Hawaiian effect on an ordinary guitar, you simply slip in, at top of string board, a special steel nut, which gives the instrument a soft, ringing sweetness when steel bar is moved up and down the keyboard, and when strings are picked with special steel finger-picks. The steel nut is priced at **.25**
The steel is 3/4 inches long and is highly tempered and polished. Price **1.00**
The Steel Thumb and Finger Picks are priced at, each **.13**
—In Musical Dept., Fifth Floor.

When you enter the Yonge Street doors you can get to Second and Third Floors much faster by using the Escalators, just inside the doors.

Monday's Dinner

Dinner served in Grill Rooms from 11 a.m. to 2 p.m.
Eaton's menu: Consisting of Lamb Chop, Farmer Sausage and Roasted Bacon.
Boiled or Mashed Potatoes
Buttered New Spinach
Raspberry Jelly with Whipped Cream, or
Apricot Tart with Ice Cream
Club Rolls and Butter
Pot of Tea or Coffee
50c.

MONDAY'S BREAKFAST

From 8.30 to 11
Oatmeal or Porridge with Cream
Poached or Fried Egg
Toast or Hot Biscuit
Marmalade or Jam
Pot of Tea or Coffee
Price 25c.
—Fifth Floor.

Hats

the most com- winter wear, or without

Winter Weights

their stock is will not be placed with

Coats



RUGS GIFTS.

Boukara, Sarook or replacing present you

Silk and Camel's Hair PRICES, from \$10.00

rooms before deciding

ing and Victoria, TORONTO.

SOLDER GRADES

TORONTO

bridge

to build a civic car line reconstructing a bridge over the

ALL, man Ward 2

HEAR E. FOSDICK

AMOUS SPEAKER. CENTRAL Y.M.C.A. NDAY, DEC. 3

WASHED NG RAGS

HEESE CLOTH. PULLAN St. Ad. 760

FATHER-IN-LAW

on telegram states that of Greece arrived there Berlin.

T. EATON CO.