

an example of Miss Ormerod's work we give two illustrations, selected almost at random :

P. 1—Asparagus Beetle, *Crioceris asparagi* Linn. (fig. 14).

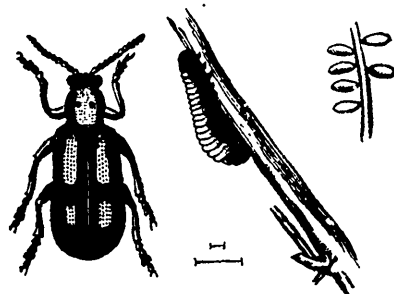


Fig. 14.

Asparagus Beetle, larva and egg ; all magnified. Natural length of egg and beetle shown by lines.

P. 123—Onion Fly, *Anthomyia ceparum* Bouché (fig. 15).

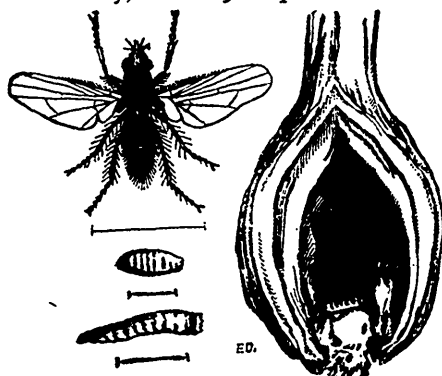


Fig. 15

Onion Fly, pupa and larva, all magnified. Onion-bulb showing pupa remaining in stored onion.

We cannot but congratulate Miss Ormerod upon the skillful manner in which she has accomplished her task, and we trust that her work will be fully appreciated by the farmers and gardeners of Great Britain, for whose special benefit it has been produced. The whole book is written in clear, simple language, free from all scientific terms and technicalities so far as they can be omitted, while the modes of prevention are such as have been