

A. Blomfield Smith, of London, England, supervising engineer of the Klondike Mines Railway, came down from the Yukon early in October.

J. Cuthbert Welch, superintendent of the Alaska Copper Company's smelter at Coppermount, Prince of Wales Island, Southeast Alaska, according to the *Ketchikan Mining Journal*, intended visiting Seattle, Washington, during October.

R. G. McConnell, of the Geological Survey Department of Canada, passed through Whitehorse on October 18 on his way from Dawson to Ottawa, having completed his field work in the Yukon for the 1906 season.

Chas. E. Sweiberg, of Chicago, Illinois, U. S. A., secretary of the Laborers' Co-operative Mining Company, has been visiting the company's properties, situated in the Golden section of Northeast Kootenay.

A. B. W. Hodges, of Grand Forks, Boundary district, local manager of the Granby Consolidated Mining, Smelting and Power Company, Ltd., has gone to New York and other Eastern places on a business visit.

Thomas R. Drummond of Greenwood, general manager of the Dominion Copper Company, Ltd., came to Victoria at the end of October to recuperate after having been ill with typhoid fever.

F. W. Guernsey of Trail, one of the engineers of the Consolidated Mining and Smelting Company of Canada, has been examining mineral claims on Hall Creek, in the Duncan River section of the Ainsworth mining division.

Mr. M. S. Davys of Nelson, who has for several years been successfully operating silver-lead mines in the neighbourhood of Slocan Lake, contemplates shortly leaving British Columbia for England.

R. H. Stewart, manager of the several mines of the Consolidated Mining and Smelting Company of Canada, Ltd., has returned to Rossland from a month's holiday trip to Eastern Canada.

Maurice M. Johnson, of Salt Lake City, Utah, in his capacity of consulting engineer to the Dominion Copper Company, recently visited the Maple Leaf in Franklin camp, north fork of Kettle River, which property the company is prospecting under a working bond with option of purchase.

J. J. Fleutot, one of the directors of the Silver Star Mining Company, owning and operating the Cork mine and concentrating mill on the south fork of Kaslo Creek, lately paid a visit of inspection to the company's property, which is managed by A. Fournier.

W. F. Almy, of Boston, Massachusetts, U. S. A., president of the Argenta Mines Company, operating the Argenta mine on Hamill Creek, Ainsworth mining division, left the district on October 22 on his return to Boston after having spent several weeks at the mine, of which A. C. Garde is manager.

H. N. Galer, vice president and general manager of the International Coal and Coke Company, operating coal mines and coke ovens at Coleman, Southeast Alberta, was in Spokane early in October. Afterwards he left Coleman on a business visit to Winnipeg, Manitoba.

Mr. Byron N. White has returned to Spokane, Washington, from the Whitehorse district, Yukon, where he has been opening up some copper properties. He appears well satisfied with the prospects of his Yukon enterprise and will return in the spring to again supervise development.

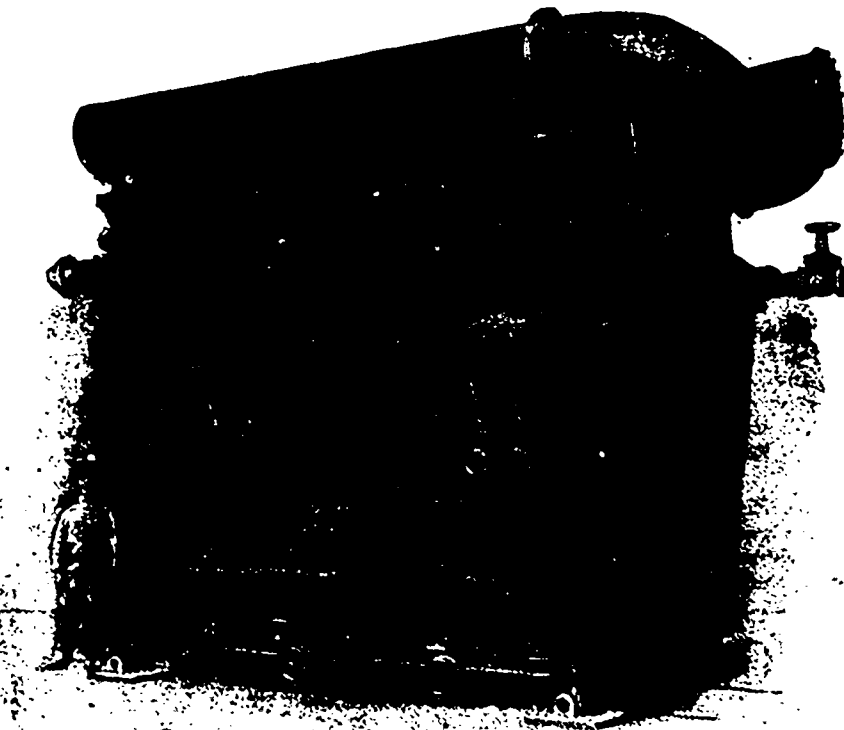
Conrad Wolfe, now of Chewelah, Washington, U. S. A., where he is manager of a copper mining property, lately revis-

Complete Mining And Metallurgical Plants

Engines and Boilers
Air Compressors
Stamp Mills
Safety Fuse
Wilfley Concentrators
Rock Crushers
Huntington Mills
Copper Furnaces
Winding Engines
Ore Cars
Locomotives
Rock Drills
Cyanide Plants
Chlorination Plants
Gold Dredges

W. H. C. MUSSEN & CO.
MONTREAL

SOLE CANADIAN AGENTS FOR
FRASER & CHALMERS, LTD.
ENGLAND.



COPPER FURNACE—Steel Water Jackets; Size 36 in. x 120 in. Steel Jacketed Matte and Slag Spouts.