

## CENTRAL EXPERIMENTAL FARM NOTES.—X.

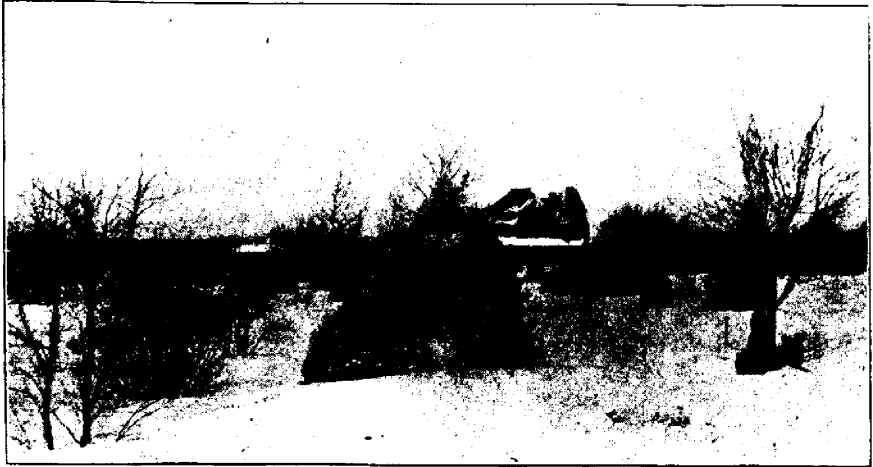


FIG. 1934. VIEW AT CENTRAL EXPERIMENTAL FARM.

**I**N many ways this has been one of the most remarkable seasons which has been experienced since the Central Experimental Farm was established. There have been few summers when showers were so frequent and long continued rain so rare. The result is that practically nothing has been injured by rain this year, and everything was benefited by the showers to such an extent that fruit, ornamental trees, shrubs, flowers and lawns never looked better than they did this season. At this date, October 12th, little injury has been done to vegetation by frost. Even such tender things as tomatoes are still growing, as what frosts there were have been very light. Many of the trees, shrubs, and plants are as green and fresh looking as they were in midsummer, and no one would suspect, if they did not know, that this was the middle of October.

The strawberry season was much longer this year than usual, the first picking being made on the 20th of June, and the last on

the 20th of July. Raspberries also were a good crop, and the season for that fruit was prolonged.

American plums did particularly well this season, and a large number of trees were heavily loaded. There is a growing demand and paying prices for these plums on the Ottawa market, and local men are planting more trees every year. Although there have been a large number of varieties sent out by nurserymen, only a few of the very best should be planted. Cheney, Wolf, Hawkeye, New Ulm, and Stoddard, are five of the best varieties yet tested, and they cover the season from the last week of August until near the end of September. Aitkin is a little earlier than Cheney, but not so good in quality.

The crop of apples was good, much better than was anticipated, for it was observed in the spring that the fruit was not setting well. Although the fruit did not set as well as usual, the extra size made up for the smaller number. The trees were