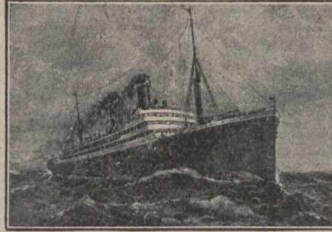


THE "ROYAL LINE"

To Europe in
Less than Four Days



LAND TO LAND

The St. Lawrence Route to Europe by the ROYAL LINE shortens the ocean voyage to less than four days, and affords the traveller two days of delightful, sheltered sailing down the great St. Lawrence with its never ending panorama of beautiful scenery and historically famous points. The splendid triple turbine steamers

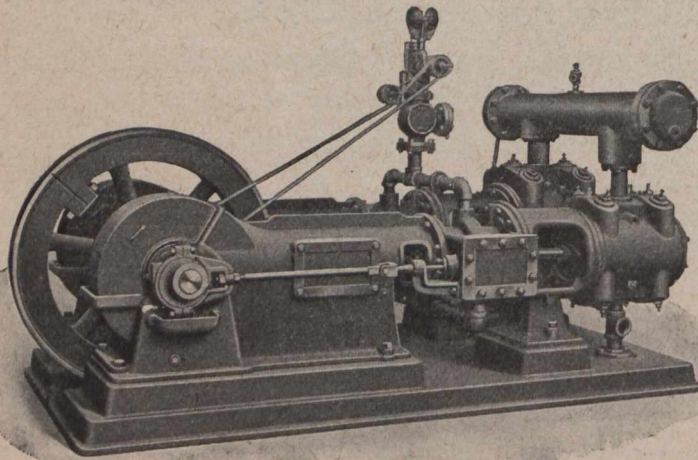
ROYAL GEORGE and ROYAL EDWARD

hold all speed records and afford the most luxurious accommodation in the Canadian-European service. The English Port, Bristol, is only two hour's run to London by the special boat trains which meet the Royal Line Steamers on arrival.

For further information see nearest Steamship Agent, or the Canadian Northern Steamships Limited.

CUY TOMBS,	General Agent,	Canadian Northern	Steamships,	Montreal, Que.
P. MOONEY,	"	"	"	Halifax, N.S.
H. G. BOURLIER,	"	"	"	Toronto, Ont.
A. H. DAVIS,	"	"	"	Winnipeg, Man.

Laidlaw-Dunn-Gordon and Clayton AIR COMPRESSORS



DUPLEX TWO STAGE ENCLOSED FORKFRAME

*Extract from Letter Dated
Nov. 29, 1911.*

"I have one of the Laidlaw-Dunn-Gordon Air Compressors, manufactured by the Clayton Works, which is giving the best of satisfaction. I consider it one of the finest makes of air compressors on the market."

Signed

*Name of Mining Company and Engineer
furnished on application.*

WRITE FOR CATALOGUE J.C. 204

MUSSENS LIMITED

Canadian
Sales Agents

MONTREAL

TORONTO

COBALT

WINNIPEG

VANCOUVER

CALGARY