

Payments for Contract Extras.

It is the clear purpose in the preparation of any well-considered contract specifications so to cover the proposed work as to include all parts of it, and thus avoid the disputes or contested claims which characterize the completion of nine contracts out of ten, or perhaps ninety-nine out of every hundred. The specifications are intended to be so complete as well as so discriminating as to show what must be done, not only in connection

with the main features of the work involved, but also as to any preparatory operations, so that the contractor shall be in no doubt as to what he is to be paid for the direct work of the contract and for any preliminary or preparatory construction, if there be any. In spite of the most scrupulous consideration by the engineer of every provision of the specifications, it will be invariably found, if the work is of sufficient magnitude to include a variety of operations, that when it is

completed there is enough doubt either as to the character of some of the work done, or in the language of the provisions covering its performance, and in the items of payment relating to it, to open the way for extra claims on the part of the contractor and for contesting their payment on the part of engineer, both, it may be assumed, acting in good faith.

The purpose of the engineer is, or ought to be, to provide for his client a reasonable and economical construe-

McGREGOR & McINTYRE

LIMITED

67 to 91 Pearl Street, Toronto, Ont.

Structural Iron Works

Beams, Channels, Tees, Angles, Chequered Plates, etc., in stock. Fire Escapes, Sidewalk Doors, Iron Stairs, etc., etc.

Sole Agents for

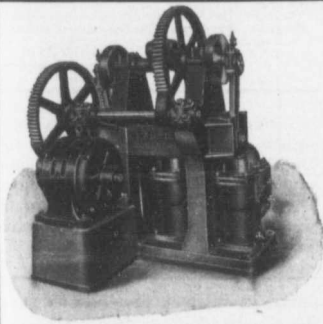
Duplex Hangers and Goetz Post Caps, Wall Boxes, Etc.

PHONES: 7248
7249

ESTIMATES FURNISHED

SEWER PIPESSal. Glazed and
Vitrified.TRUE TO SIZE
IMPERVIOUS TO WATER
WILL NEVER DISINTEGRATESizes manufactured and
always in stock:
4-inch to 24-inch.CHIMNEY TOPS FLUE LININGS WALL COPING. *Ask for Price
List & Discount*
Telephone (Toronto Connection): Park 1809. Post Office: SWANSEA.**THE DOMINION SEWER PIPE CO., LIMITED**
(THE INDEPENDENT COMPANY)

WORKS AND OFFICE: SWANSEA (NEAR TORONTO)

**"LAURIE"
Power
Pumps**FOR
General Water Supply
Municipal Water Works
Mine Pumping, etc.
*Write for Catalogue***LAURIE ENGINE
AND
MACHINE CO.
Limited
MONTREAL**PARMELEE & NICHOLSON,
Toronto Agents.
GUILFORD & SON,
Halifax Agents.**"ESCO" PRODUCTS**

PENETRATE — DO NOT FILM

"Esco" water-proofs and damp-proofs cement, concrete, plaster, brick and stone surfaces, interior and exterior. One coat makes concrete impervious to moisture. Cement blocks coated with "Esco" will be made absolutely waterproof. "Esco" applied to the interior of brick walls prevents dampness penetrating the building. For waterproofing foundations, tunnels, cellars, etc., it has no equal. Also "Esco" Steel Coating, the greatest preservative for iron, wood or steel.

Local Agents Wanted. For circulars and other particulars, apply to

EADIE-DOUGLAS CO., Montreal

**CONTRACTORS FOR
STEEL HIGHWAY
BRIDGES,
CONCRETE ABUT-
MENTS,
REINFORCED CON-
CRETE FLOORS,
ETC.**

ONTARIO BRIDGE COMPANY

34 VICTORIA STREET, TORONTO, ONT.

**Well Drilling
Contractors**

Equipped with the most modern machinery for drilling Water, Oil, Gas or Salt Wells, to 50 or 5,000 feet in depth, any diameter from 4 to 12 inches.

Tests made for foundations, such as—Building Bridges, Trestle Work, Canals, etc.

WALLACE BELL
275 Laval Ave., MONTREAL, CAN.References from the largest Manufacturing
Companies, and Financial Institutions
in Canada.