

we will add
at Sault Ste.
Canadian Pacific
as far as
Canada Atlan-
broke Rail-
le, by Can-
nth will find

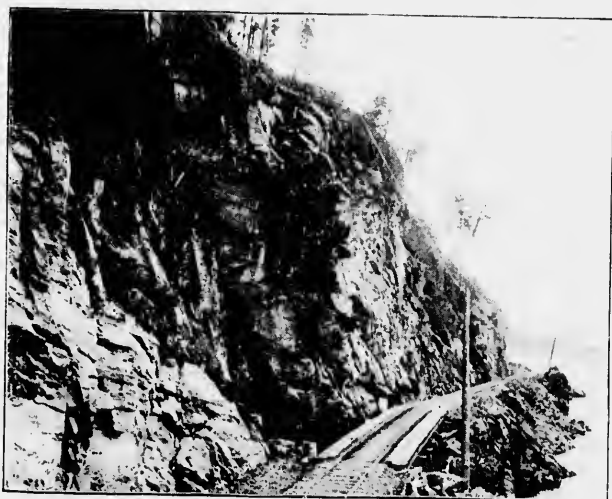
miles—now
Laurentian
utiful pas-



ges; then
nd-toss'd
s taken.
us, rock,
hold the
be Laur-
te) form
ow bold
nk until
cars for

Mattawa,

At the confluence of the Ottawa River from the north, and the Mattawa River from the west, is a distributing centre of the lumber trade, very picturesquely situated, and of great interest from a geological point of view. An historical fact equally interesting, is, it was here, in 1615, the noted Champlain left the Ottawa River, (on his search for the short passage to China) on finding its course was from the north, and followed Mattawa River Valley and Nipissing Lake to Georgian Bay. From here the proposed Ottawa and Georgian Bay Ship Canal will leave the Ottawa, then following the valley of the Mattawa River, and



DEVIL'S GARDEN, SEVEN LEAGUE LAKE.

a valley or depression in the land—once the presumed outlet of Nipissing Lake—will enter that lake. In Mattawa the Hudson Bay Company and other merchants have general stores, where hunting parties can be provisioned, canoes, guides, and all requisites pertaining to a properly equipped expedition, procured without trouble. Mr. Colin Rankin, late Factor of the Hudson's Bay Co. for this district, resides in Mattawa—a gentleman well-known throughout the Ottawa Valley; who is a fund of information and story, and knows the country well, by canoe and otherwise, from Lake Superior to Labrador.

After breakfast, procured at any of the hotels—of which there are several—the train is boarded for Temiskaming. And