

The Tennis Courts and Bowling Green of the Lawrence Park Estate

## A BEAUTIFUL PLACE TO LIVE IN

Beautiful spots in which to live are becoming scarce. They are being bought up, and built upon rapidly. Lawrence Park is really the only suburban beauty spot near Toronto where there is natural landscape, highly developed and where costly improvements have added an artistic charm. There is

plenty of room left for those who may select home sites within the next few months.

### BUY BEFORE PRICES ADVANCE

It is inevitable that prices will advance by next spring, in the meantime, select the best lot you can, before choicest ones are taken.

# LAWRENCE PARK

(NORTH TORONTO)

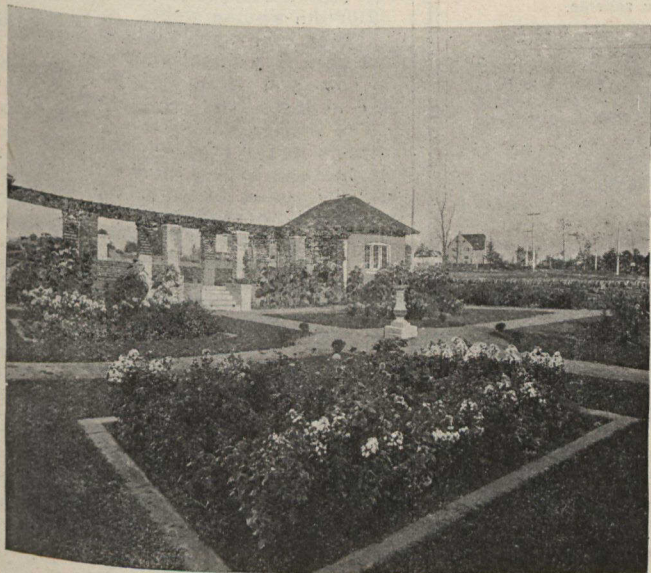
### AS AN INVESTMENT

Lawrence Park has made such substantial improvements and has been made the home of so many prominent people, who have erected such lovely homes that the high character of the Park guarantees a permanence of value. A purchase of lots here will be profitable because there is a continually increasing demand, and lots in Lawrence Park as in other places under similar circumstances will increase wonderfully in value in a short time.

### FOR A HOME

The situation of Lawrence Park is ideal. It is high, good natural drainage, rolling landscape, a ravine beautifully wooded, and quite a strip of woods borders the south side of the property. Hundreds of trees and shrubs have been set out, grading, sodding and seeding have been done, fine roads and walks built, sewers, water, gas and electric light are already put in. All the comforts of the city, only 15 minutes ride up Yonge Street on Metropolitan Cars to Lawrence Park.

## LOTS ARE \$20 PER FOOT UPWARDS



Formal Garden of Jno. Firstbrook Esq.

Send for our  
Beautiful  
New Book  
FREE.

It contains illustrations  
of views taken at  
Lawrence Park.



One of the many charming walks on Lawrence Park Estate

# Dovercourt Land, Building & Savings Co., Ltd.

24 Adelaide St. East, Toronto

PHONE M. 7281