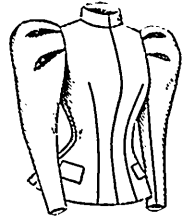


the lining is closed at the center of the front. The standing collar closes at the left side and a plaited frill rises from it at the back and sides. The blouse may be worn with or without a peplum that is joined to a belt and may be in square or round tabs. The gathered two-seam sleeves are mounted on coat-shaped linings and stand off stylishly at the top.

The mode is excellently adapted to heavy materials, such as Bengaline, heavy satin, velvet, corduroy and silk-and-wool mixtures. Jet or silk passementerie or lace bands will unite with platings of silk, satin or chiffon in the decoration.

We have pattern No. 9366 in seven sizes for ladies from thirty to forty-two inches, bust measure. To make the garment for a lady of medium size, needs three yards and seven-eighths of goods twenty-two inches wide. Price of pattern, 1s. or 25 cents.

back joins the front at the right side in shoulder and under-arm seams, and the closing is made along the left shoulder and under-arm edges. Two rows of gathers made at belt depth apart are tacked to the lining to make the waist droop all round over a wrinkled ribbon belt or any other style of belt preferred. The long sleeves may be plain or in Venetian points at the wrists and finished with lace-edged frills of the material. The

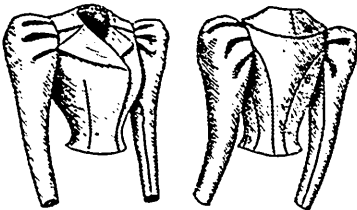


9400

LADIES' BLOUSE-WAIST, CLOSED ALONG THE LEFT SHOULDER AND UNDER-ARM EDGES. (TO BE MADE WITH A HIGH OR SQUARE NECK AND WITH FULL-LENGTH SLEEVES OR SHORT FRILL SLEEVES.) KNOWN AS THE YORK BLOUSE.

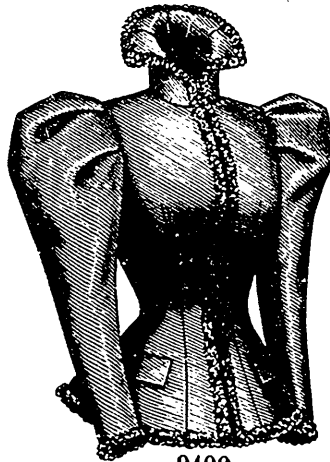
(For Illustrations see Page 396.)

No. 9396.—For this remarkably stylish blouse-waist, which is known as the York blouse, blue silk was selected and lace edging and insertion and ribbon provide quite an elaborate decoration. The blouse-waist may be made with a high neck or a low square neck, and with full-length sleeves having three frill caps



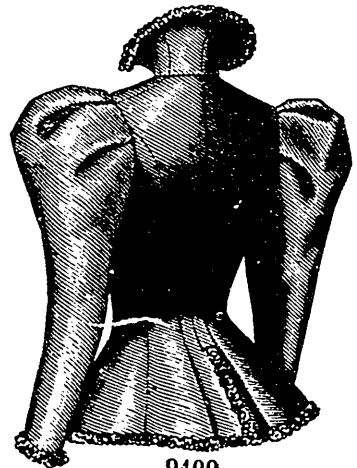
9403

9403



9400

Front View.



9400

Back View.

LADIES' COAT OR JACKET. (TO BE MADE WITH LAFAYETTE OR MILITARY COLLAR.)

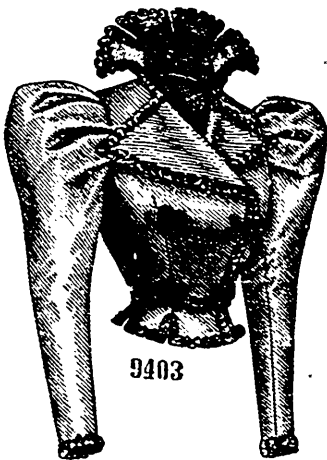
(For Description see Page 382.)

fluffing out in a stylish way or with short frill sleeves that are decidedly smart. It has a lin-

three frill caps are graduated in depth and edged with lace. When the waist is made with a high neck, a standing collar with a graduated frill at the top and a ribbon stock finished at the back in a bow, complete it stylishly.

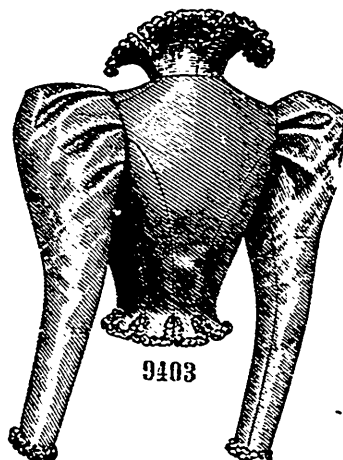
For evening or day wear the mode is extremely stylish and the selection of materials will depend upon the occasions for which the blouse-waist is intended. For evening wear, silk, chiffon over silk, Brussels net and silk, and velvet and chiffon will frequently be chosen, and cloth and silk, serge and silk, and various pretty combinations will be made up for day wear.

We have pattern No. 9396 in seven sizes for ladies from thirty to forty-two inches, bust measure. For a lady of medium size, the waist with short sleeves needs three yards and five-eighths of goods twenty-two inches wide, and the waist with full-length sleeves needs four yards and a half of goods twenty-two inches wide. Price of pattern, 1s. or 25 cents.



9403

Front View.



9403

Back View.

LADIES' DOUBLE-BREASTED ETON JACKET OR COAT. (TO BE FINISHED PLAIN OR IN TABS BELOW THE WAIST.)

(For Description see Page 381.)

LADIES' TUCKED RUSSIAN BLOUSE. (KNOWN AS THE PAULOVNA BLOUSE.)

(For Illustrations see Page 396.)

No. 9368.—The Paulovna blouse is a charming Russian style displaying clusters of small tucks attractively arranged. Silk was used for the blouse, which is supported by a fitted lining that is closed at the center of the front. The fronts and back have fulness collected in gathers at the neck and in three rows of shirring at the waist, the shirrings being tacked to the lining to make the blouse pouch all round over a wrinkled belt that is finished in a frill at its overlap-

ing that is closely fitted by single bust darts and the usual seams and closed at the center of the front. The seamless

tacked to the lining to make the blouse pouch all round over a wrinkled belt that is finished in a frill at its overlap-