

**TORONTO CONSERVATORY OF MUSIC**  
**EDWARD FISHER, Mus. Doc.,**  
 Musical Director.  
 Send for  
**NEW ILLUSTRATED CALENDAR,**  
 containing 150 pages of information concern-  
 ing all departments of instruction. Attend-  
 ance during past year over 1,500.  
**School of Expression**  
 F. H. Kirkpatrick, Ph.B., Principal.  
 Special Calendar.

**CHURCH DAY SCHOOL**  
 Major Street, Toronto  
**SISTERS S. JOHN THE DIVINE**  
**KINDERGARTEN and**  
**ELEMENTARY DEPARTMENT**

**Edgehill, Church School for Girls**  
**WINDSOR, NOVA SCOTIA**  
 INCORPORATED 1891.  
 The Bishop of Nova Scotia, Chairman Board of Trustees. The Bishop of Fredericton, member of Board of Trustees, ex-officio.  
 Lady Principal, Miss Gena Smith, (late Lady Principal of King's Hall, Compton, P. Q.), formerly Headmistress of St. Stephen's High School, Windsor, England, assisted by Eleven Resident Experienced Governesses from England, (five of whom are specialists in the Music and Art Departments). House-keeper, Matron and Nurse.  
 Extensive buildings, with capacity for 100 Residents; Heated by Hot Water, Lighted by Electricity, Grounds covering eight acres, with Lawns for Tennis, Croquet, Basket Ball, Hockey, &c. School Dairy and Laundry.  
 Preparation for the Universities.  
 For Calendar apply to **DR. HIND.**

**HIGHER EDUCATION FOR GIRLS**  
**THE BISHOP STRACHAN SCHOOL**  
 (Thirty-ninth Year)  
 PRESIDENT the Lord Bishop of Toronto.  
 Wykeham Hall, College Street, Toronto.  
 Full Matriculation course also  
 Elementary work.  
 For Calendar apply to  
 Miss Acres, Lady Principal.

**Ridley College, St. Catharines, Ont.**  
**Residential School for Boys.**  
 Lower school for boys under fourteen; completely separate and limited in number.  
 Upper school prepares boys for the universities, professions and for business. Most careful oversight. Health conditions unequalled.  
 REV. J. O. MILLER, M.A., D.C.L.,  
 Principal.

**The Alexander Engraving Co.**  
 16 Adelaide Street West, Toronto.  
 Half-tone Engravings, Zinc Etch-  
 ings, Wood Cuts, Designing and  
 Commercial Photography.  
**Our Cuts give Satisfaction.** Samples on Application  
 Phone Main 2158.

**MEMORIALS AND DOMESTIC GLASS**  
 DOMINION STAINED GLASS  
 For Co. 361881  
 34 RICHMOND ST. E., TORONTO.  
 - Finest & Prompt -

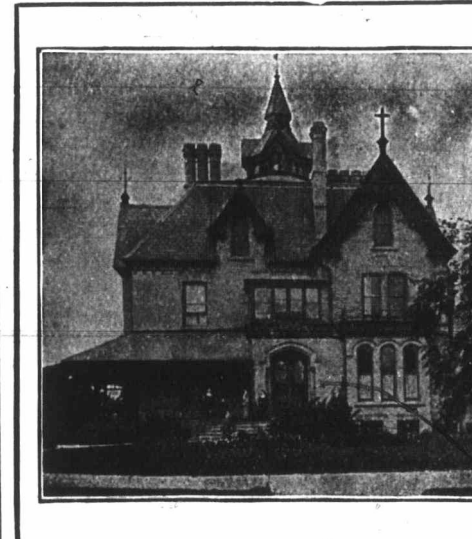
**STAINED GLASS**  
**MEMORIAL WINDOWS**  
 BRASSES AND DECORATIONS  
**CASTLE & SON,**  
 2446 St. Catherine Street, - Montreal.



**"Glen Mahur"**  
 RESIDENTIAL AND DAY SCHOOL FOR GIRLS  
 651 SPADINA AVENUE, TORONTO  
 Thorough English Course. Individual Attention. Pupils prepared for the Universities and for Examinations in Music and Art. Large staff of Resident and Visiting Teachers.  
 MISS VEALS, Lady Principal.

**School of the Sisters of the Church,** 106 Beverley Street, TORONTO, Ont.  
 Boarding and Day School for Girls.  
 Visitor, The Lord Bishop of Toronto.  
 Terms Moderate. Vacancies for Boarders.  
 SCHOOL RE-OPENS MONDAY, SEPT. 11th, 1905.  
 ADDRESS, - SISTER IN CHARGE.

**WESTBOURNE School for Girls**  
 340 Bloor Street W., - TORONTO, Can.  
 Re-opens September 11th, 1905.  
 A Residential and Day School, well appointed, well managed and convenient. Specialists in each department. Affiliated with the Toronto Conservatory of Music. Dr. Edward Fisher, Musical Director; F. McGillivray Knowles, R.C.A., Art Director. For announcement and information, address the principals,  
 MISS M. CURLETTE, B.A.  
 MISS F. E. DALLAS, Mus. Bach.



**Bishop Bethune College,**  
**OSHAWA, Ontario.**  
 Visitor, the Lord Bishop of Toronto.  
**Preparation for the University.**  
 Young Children also Received.  
 For terms and particulars apply to the SISTER IN CHARGE, or to  
**The Sisters of St. John the Divine,**  
 Major Street, Toronto.

**Canada Plate & Window Glass Company**  
 Stained Glass Windows, Fancy and Figured Glass for Churches and School Rooms. Tile and Mosaic Floors and Walls. Mantles and Fire Place Fittings.  
**29 to 31 Richmond Street East, - Toronto, - Ontario.**

**Memorial Windows**  
 DOMESTIC ART GLASS  
 Cheapest and Best. Send for References.  
**H. E. ST. GEORGE, LONDON, Ont.**

**CHURCH BRASS WORK** of every description made to order on shortest notice. Designs furnished and satisfaction guaranteed.  
**KEITH & FITZSIMONS, LIMITED**  
 111 King Street West, Toronto.

FAVORABLY KNOWN SINCE 1826. **BELLS** HAVE FURNISHED 35,000 Bells. PUREST BEST. **MENEELY & CO.,** WEST-TROY, N.Y. GENUINE BELL-METAL CHIMES, ETC. CATALOGUE & PRICES FREE.

**When Writing to Advertisers Please Mention The Canadian Churchman.**

**ST. ALBAN'S CATHEDRAL SCHOOL**  
 Howland Avenue, Toronto.  
 Boys Prepared for Honor Matriculation.  
 Reopens for BOARDERS and DAY Boys, September 14th. For Prospectus Apply, M. E. MATTHEWS, Principal.

**DUNHAM LADIES' COLLEGE,**  
 DUNHAM, - QUE.  
 Montreal Diocesan Church School for Girls.  
 For Calendar, apply to the Lady Principal.

**Trinity College School**  
**PORT HOPE, Ont.**  
 Next Term begins September 12th.  
 For Calendar and all particulars apply to  
 Rev. OSWALD RIGBY, M.A., LL.D., Headmaster

**MEMORIAL WINDOWS.**  
 Our productions are extensively adopted.  
**Robert McCausland, Limited**  
 86 Wellington St. West, TORONTO

**CROWN ART**  
**Stained Glass Co., Limited**  
**Memorial Windows and Art Stained Glass**  
 For Churches, Public Buildings, and Dwellings. GLASS TILING A SPECIALTY.  
 96-98 Adelaide St. E., Toronto.  
 Phone Main 5006

**FURNITURE**  
 FOR CHURCH & SUNDAY SCHOOL  
**DUNDAS ONT.**

Church & Memorial Windows STAINED GLASS  
 DESIGNS ESTIMATES SUBMITTED  
**LUXTER PRISM**  
 111 King St. W. Toronto

**JONES AND WILLIS**  
 Church Furniture Manufacturers  
**Metal, Wood, Stone and Textile Fabrics.**  
**STAINED GLASS ARTISTS.**  
 43 Great Russell Street, LONDON, ENG.  
 Opposite British Museum.  
 Also at Birmingham and Liverpool.

**ST. AGNES' SCHOOL.**  
**A Church School for Girls,**  
 ELMPOOL, BELLEVILLE, ONTARIO.  
 Patron—The Lord Bishop of Ontario.  
 Thorough Courses in English, Languages, Music, Art and Physical Culture.  
 Conservatory of Music Examinations held at the School.  
 Pupils taken from the Kindergarten to Preparation for the Universities.  
 The success of the School has justified a large addition to the building, containing six Class Rooms, Piano Rooms, Gymnasium, Swimming Bath and Sleeping Apartments. The building is heated by steam and lighted by gas and electricity.  
 The grounds extend over five acres.  
 For Prospectus and further information apply to  
 MISS F. E. CARROLL,  
 Lady Principal.  
 Terms Moderate.

**Memorial Windows**  
 Our Specialty.  
 The N. T. LYON GLASS CO., Ltd.,  
 141-3 CHURCH ST., - TORONTO.

**Harrington's**  
**TUBULAR Chime Bells.**  
 Lighter in Weight, Sweeter in Tone, Cheaper in Price than the ordinary bell,  
 COVENTRY, - ENGLAND.

**CASTLE & SON, Agents,**  
 2446 St. Catherine Street, Montreal.

**CHURCH BRASS WORK**  
 Eagle and Rail Lecterns, Altar Vases, Ewers, Candlesticks, Altar Desks, Crosses, Vesper Lights, Altar Rails, Etc. Chandelier and Gas Fixtures.  
**CHADWICK BROTHERS**  
 (Successors to J. A. Chadwick)  
 MANUFACTURERS  
 182 to 200 King William St. HAMILTON, Ont.

**Church Brass Work**  
 MEMORIAL BRASSES. RAILS VASES.  
**PRITCHARD ANDREWS**  
 CO OF OTTAWA, LIMITED  
 133 Sparks St. OTTAWA.