

Picturing the Fury of the Frost King and a Reminder of Last Summer



ENJOYING THE PURE AIR ON THE LAKE FRONT BOULEVARD AT EXHIBITION PARK.



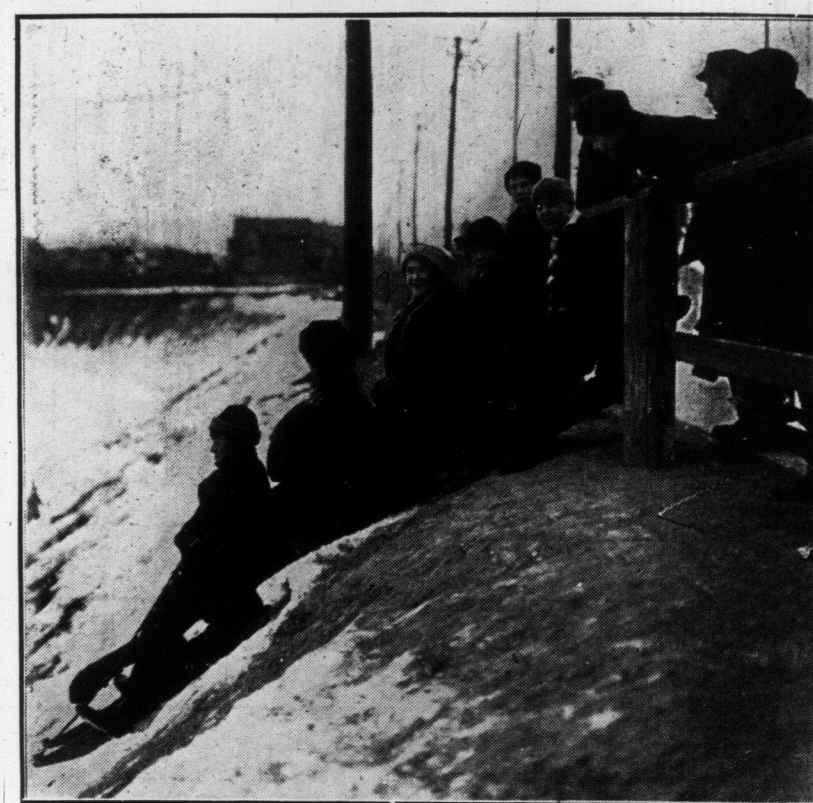
LAKE FRONT BOULEVARD AT EXHIBITION PARK.



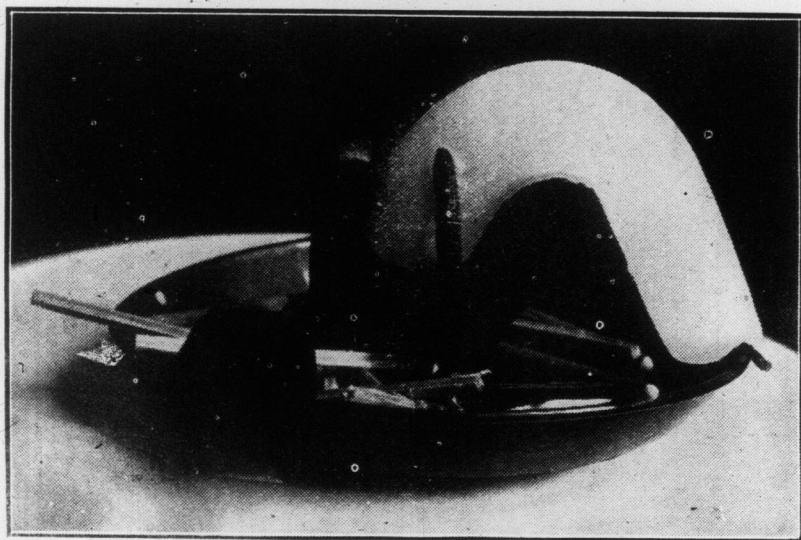
A WINTER THERMOMETER.



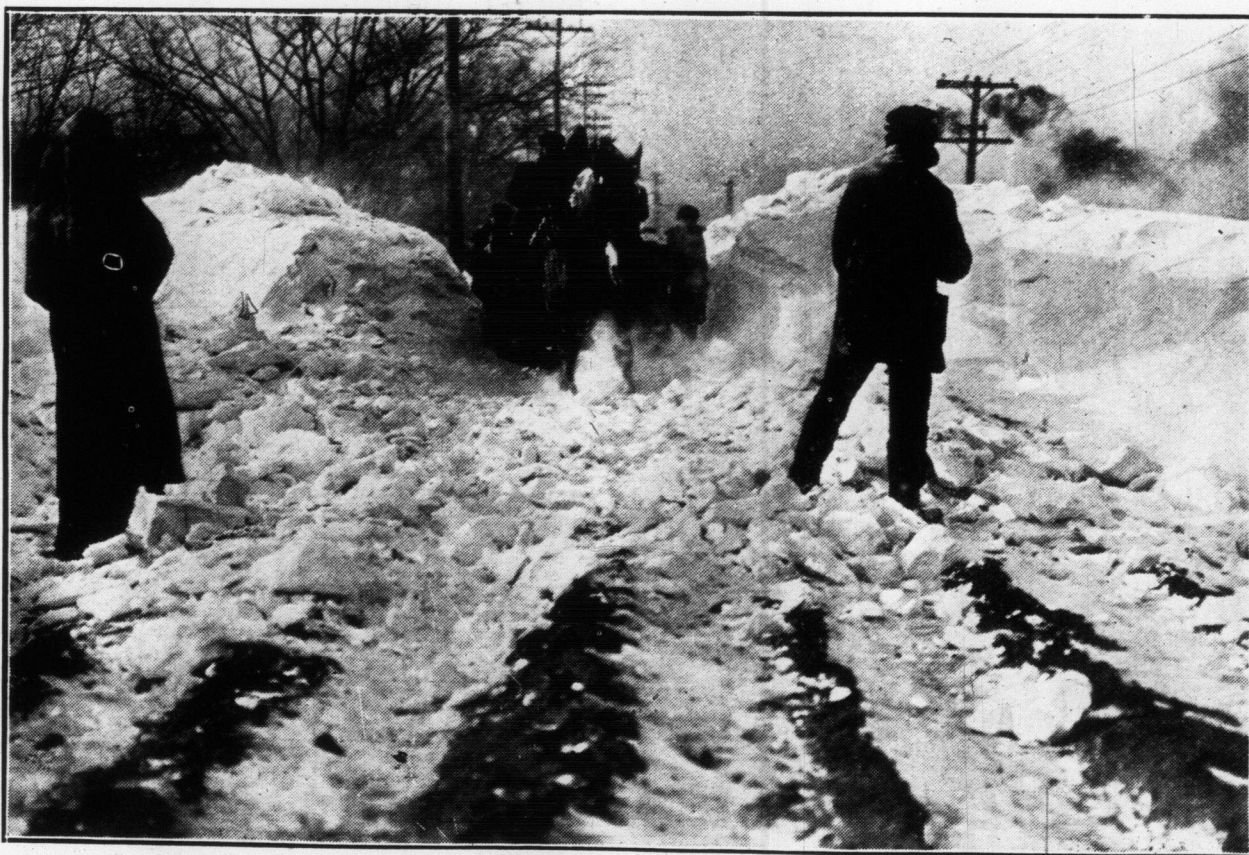
KEEPING THE ROAD OPEN TO FISHERMAN'S ISLAND.



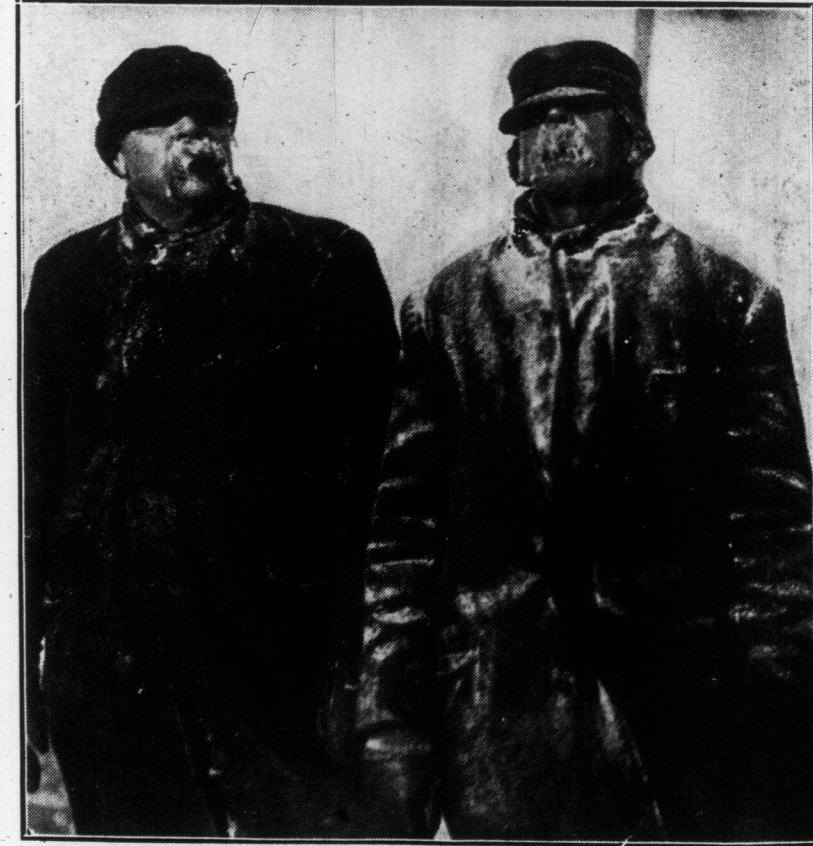
BOB-SLEIGHING AT WILLOWVALE PARK.



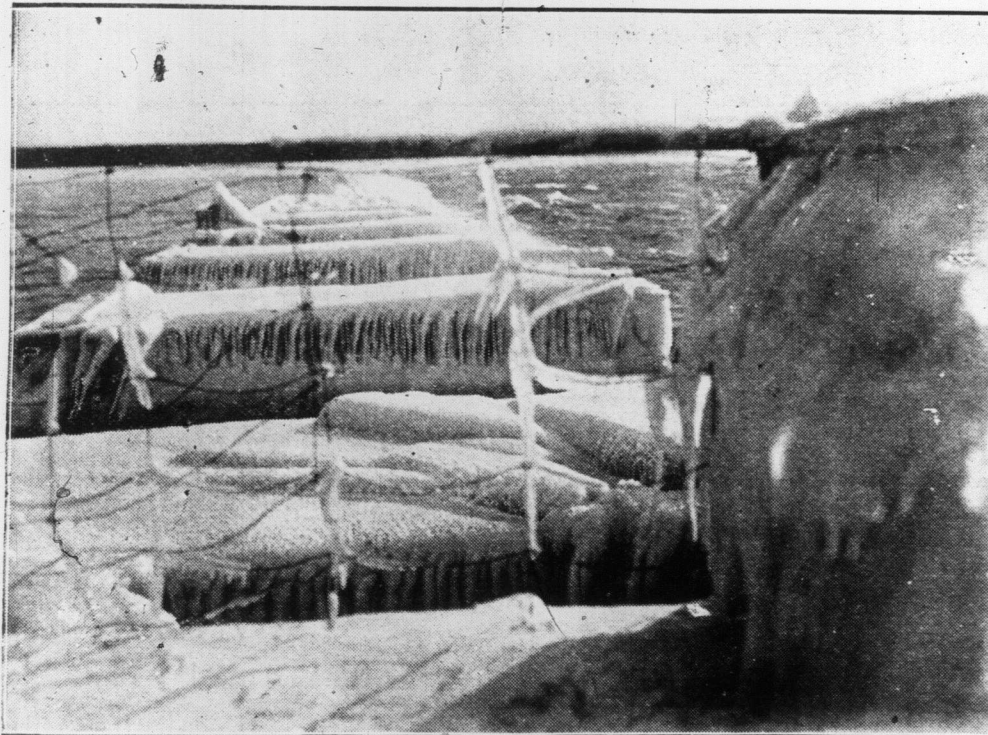
AND WHAT HAPPENED IN JULY, LAST.



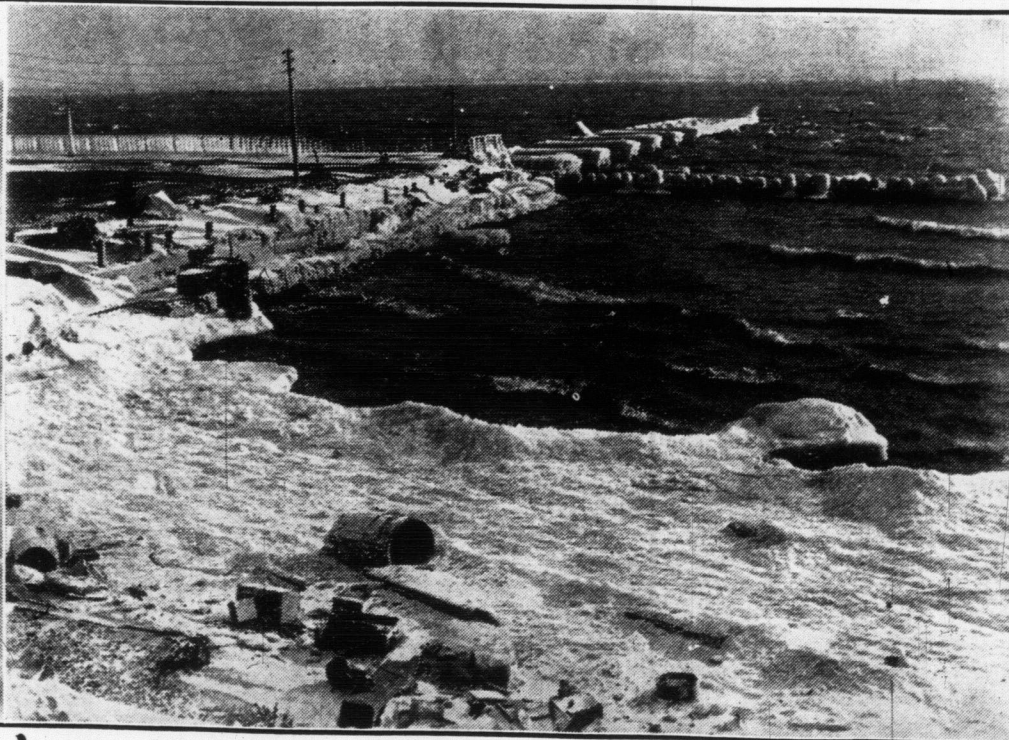
GETTING COAL SUPPLIES THRU 10-FOOT DRIFTS ON THE ASHBRIDGE MARSH-ROAD.



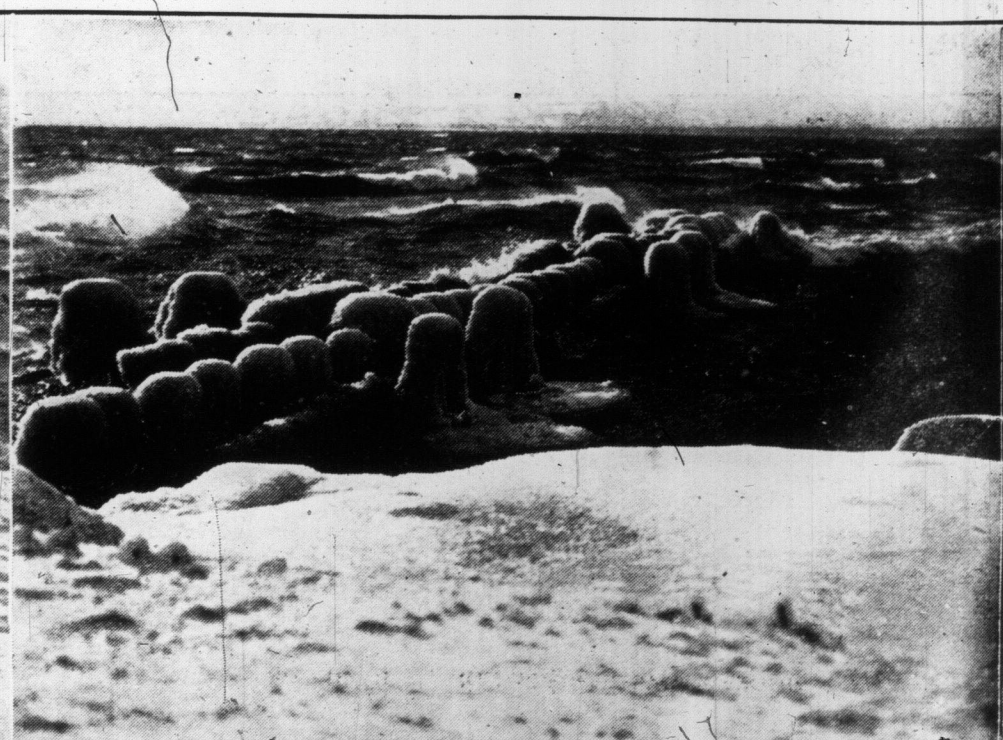
CITY STREET CLEANERS WHO TOILED IN BELOW-ZERO WEATHER TO KEEP THE SNOWDRIFTS DOWN.



ICE FORMATIONS OFF EXHIBITION PARK.



SCENE OFF EXHIBITION PARK.



THE LAKE AT SUNNYSIDE.