

Sale Commences at 10 a.m. Friday at Property and Main Office

Melrose Park

ROBINS LIMITED AGENTS

Toronto's "Highland" Suburb

is situated on Yonge street, 600 feet above the level of the lake. It is just opposite the beautiful grounds and clubhouse of the Rosedale Golf Club.

It has excellent street car connections and service.

It is near churches, schools, stores and post-office.

It is restricted to a good class of dwellings.

It will be built up rapidly, as many improvements are already in the locality and more will be installed almost immediately.

It is one of the choicest home spots in North Toronto.

It has a bountiful supply of good spring water.

Real Estate as an Investment

TORONTO Real Estate is increasing in value by leaps and bounds. Compare prices on any spot in or around Toronto of three years ago with prices for same spot to-day.

With Toronto growing at its present rate, figure out for yourself what it will be three years from now.

Building permits to the amount of \$18,000,000 were issued last year.

Points to Remember:

We already have over 15,000 satisfied customers amongst our investors.

We are the largest real estate operators in the Dominion, selling direct to the public at wholesale prices.

Your interests are safe in our hands, as we will protect your titles should necessity demand your asking for an extension for reasons beyond your control.

You can order by mail or phone, and we will absolutely guarantee you lots perfectly level and in good condition to build upon.

Your interests and our interests are identical—you want a good home that is also a good investment, and we want to help you to get it.

We had 50 salesmen on the ground at Melrose Park on our opening day, last Saturday, but the crowd was too large for them to handle and many prospective purchasers went away disappointed.

49 lots were taken up on Saturday afternoon alone, and many more have been sold during the week.

Do not delay, as this is the last and best opportunity for securing a home on the highlands above Toronto at such advantageous terms.

Office open Thursday night. If you miss Friday's sale come out Saturday afternoon.

Get off at stop 26.

Leaving Melrose Park, after First Sale, in Robins Ltd. Special Cars.

THIS COUPON can be exchanged for ONE ROUND TRIP TICKET between

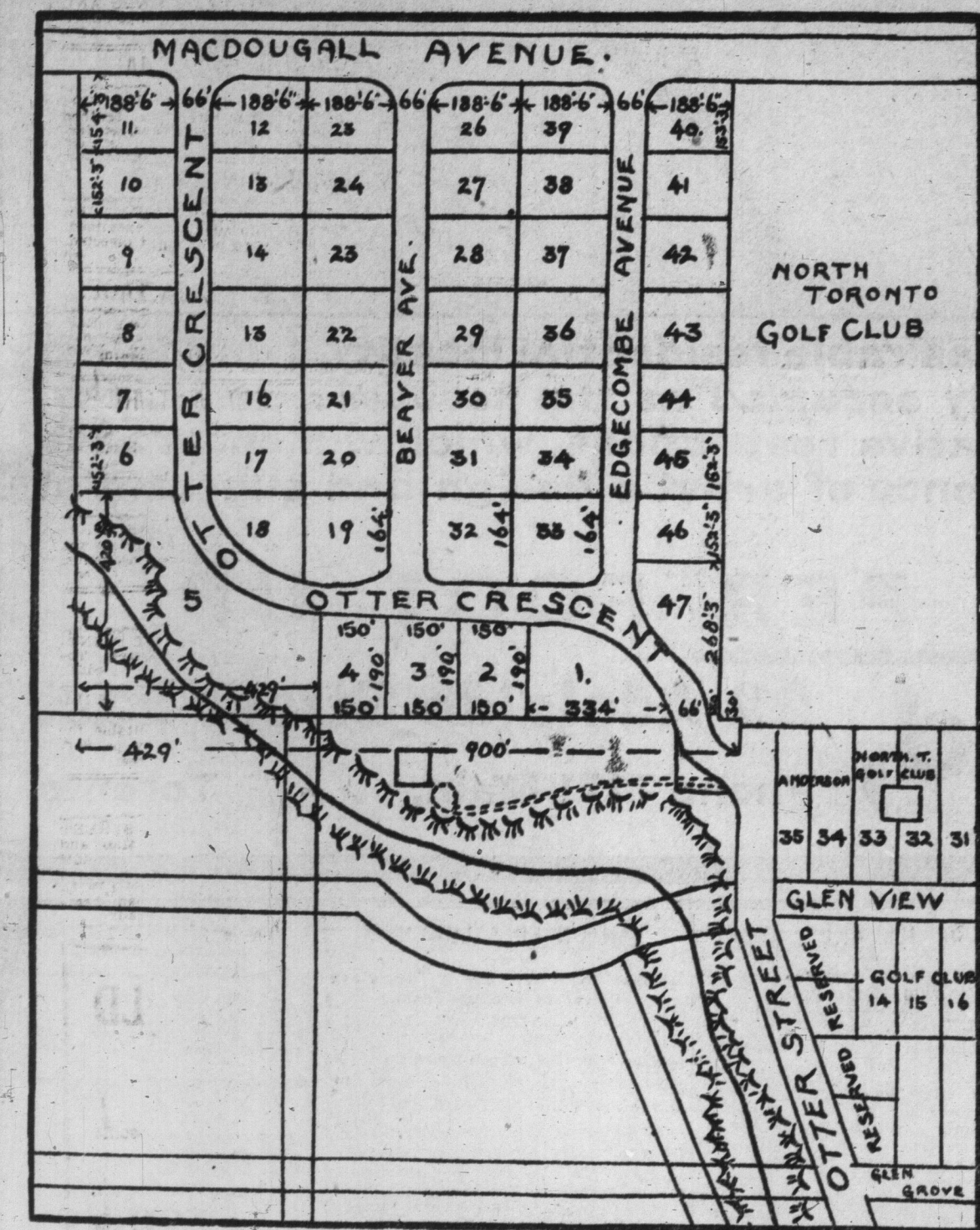
C.P.R. Waiting-Room Melrose Park on Yonge Street and Melrose Park

Good Going on special cars chartered by ROBINS LIMITED at 2.45 p.m., Friday, Mar. 25, and good returning on any car during the day

NAME _____
in full _____
Street _____
Address _____

City _____ Prov. _____
This coupon must be filled out and exchanged at Metro-Titan Street Railway Ticket Office for Round Trip Tickets.

ROBINS LIMITED, 22 Adelaide St. E.
Phone 7171 Main **TORONTO**



Edgecombe Park Property Lots For Sale

GLENGROVE District, North Toronto, immediately west of and adjoining North Toronto Golf Links. Take "Glengrove" car on Metropolitan Railway—15 minutes ride—a car every 15 minutes. Go west on Glengrove Avenue to Otter Street and then north to Edgecombe Park.

Glengrove Avenue is 86 feet wide, has four rows of large shade trees, brick walk, town water nearly to the west end, and the new sewer projected along the street. Edgecombe Park is about 500 feet away.

The location is ideal, high, healthy, growing in

value and beautiful homes all along from Yonge Street nearly up to the property.

Wise buyers of home lots are looking north. No lot less than 150 feet front and 180 feet deep. Wise restrictions insure desirable neighbors. The above property has been desirable, but not available. It is now available and doubly desirable.

We unhesitatingly recommend this property at its present price, which will be raised April 1st. Inspect the property and see plan at our office. Correspondence solicited.

Reasonable terms and a substantial bonus to the first three houses built and occupied by purchasers.

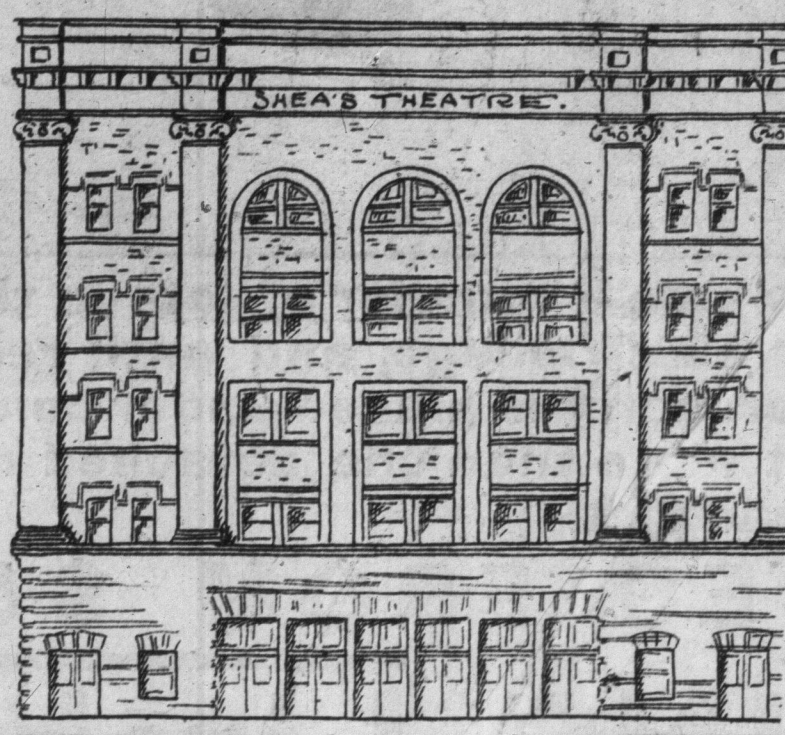
Real Estate Department

Union Trust Company, Limited

174 Bay Street - - Toronto

Exclusive Agents

Realty and Building



THE NEW SHEA'S THEATRE.

Front elevation of Toronto's newest playhouse at Victoria and Richmond—From an architect's drawing.

The realty situation in Toronto for the coming season has a strong optimistic outlook for the artisan. In addition to the erection of dwelling houses and stores, which are estimated to amount to \$15,000,000, over a dozen buildings will be commenced ranging in value from \$20,000 to \$1,000,000 each, not including what might be erected on the Carlton-street site.

Acting on behalf of the Roman Stone Co., Limited, Sir Henry Pellatt has purchased from Gouling & Hamilton four acres of land for a new site in Weston. The price paid is said to be \$10,000, and the land is admirably situated for factory purposes, being right at the point where the Grand Trunk and the C. P. R. tracks come together, and form a "Y."

Messrs. Gouling & Hamilton report that nearly the whole of Oakwood Park has been sold, and another new subdivision will be opened shortly to the west. The new property will be easily reached by the Dovercourt cars and, like Oakwood, will extend from Davenport-road to St. Clair-avenue, comprising an area of 50 acres.

Several parcels of land have been sold in Weston recently for factory

use, and the outlook for a good season's business is reported favorable. The new water mains are delivered and will be put into the ground at once.

An innovation in the way of a temperance hotel in Toronto is to be introduced when Oak Hall vacates its present building on East King-street in favor of a more pretentious location on Yonge-street. The old building has been acquired from the W. E. Sanford Co., Hamilton, for about \$35,000, by W. A. Thomson, 88 York-street.

Alterations are to be made costing \$10,000, which will provide accommodation for 150 guests. This hotel will be run upon the European plan, like the "Waverley" hotels in Europe. Mr. Thomson will retain control, having a manager to run the place for him. The building has a frontage of 32 feet on King-street, with a depth of 95 feet, and is assessed for \$27,000.

Workmen yesterday commenced the construction of 15 houses for A. E. Brown on the north side of Woodlawn-avenue, west of Yonge-street. The lot has a frontage of 250 feet, with a depth of about 180 feet. These houses are to be semi-detached, five pairs and one single, and will cost \$35,000 exclusive of the land, which is worth \$50 a foot.

ture laying down of tracks from the C. P. R. crossing to the city line. The company's franchise up to the south of Farnham-avenue will expire in 1915, and is not renewable. North of there the company's single track franchise is renewable after 21 years. It was deemed advisable to let conditions remain as they are, pending the possibility of the city building a line as far as Farnham-avenue.

Voting day on the money bylaws will not be postponed beyond April 9, as was suggested.

The Tubes Problem. At next Tuesday's special meeting on tubes, the matter of employing a special solicitor to assist the city solicitor on the tubes problem will be considered. A competent engineer will be engaged to assist the city engineer in preparing a general plan for a subway service, and the mayor, Chairman McCarthy and Mr. Rust will visit American cities having underground railways, for the purpose of securing information and an expert.

Union Station Favored. Controller Spence urged that the city should endeavor to prevent the rail-

Real Estate Wakefield

Cor. St. Clair and Ossington Ave.

\$10,000—JAMES AND CARLTON VICTORIA, modern residence, solid brick, 12 rooms, with bath, heating, laundry tub, electric light gas, and all modern appliances. Large bright rooms, lot 55x110; good lawn; and a number of apple and pear trees; splendid investment on easy terms.

\$3500—MACDONELL AVENUE, SOLID brick, 9 rooms, open plumbing, gas, newly decorated; a very attractive home; deep lot; cash \$500.

\$4000—RIVERDALE AVENUE, DETACHED, square plan, 10 roomed residence, solid brick, hot water heating, side entrance, lot 25x110 ft.; \$1000 cash; choice locality; must be sold.

LOTS FOR SALE IN ST. CLAIR DISTRICT.

KENNEDY AVENUE, 60 FT., \$16 PER FOOT.

HELENA AVENUE, 40 FT., \$20 PER FOOT.

OAKWOOD AVENUE, 60 FT., \$15 PER FOOT.

DAVENPORT ROAD, 54 FT., \$15 PER FOOT.

GOODWOOD AVENUE, \$12 PER FOOT.

DUFFERIN STREET, \$15 PER FOOT.

BLOCKS OF LAND NORTH ST. CLAIR a specialty.

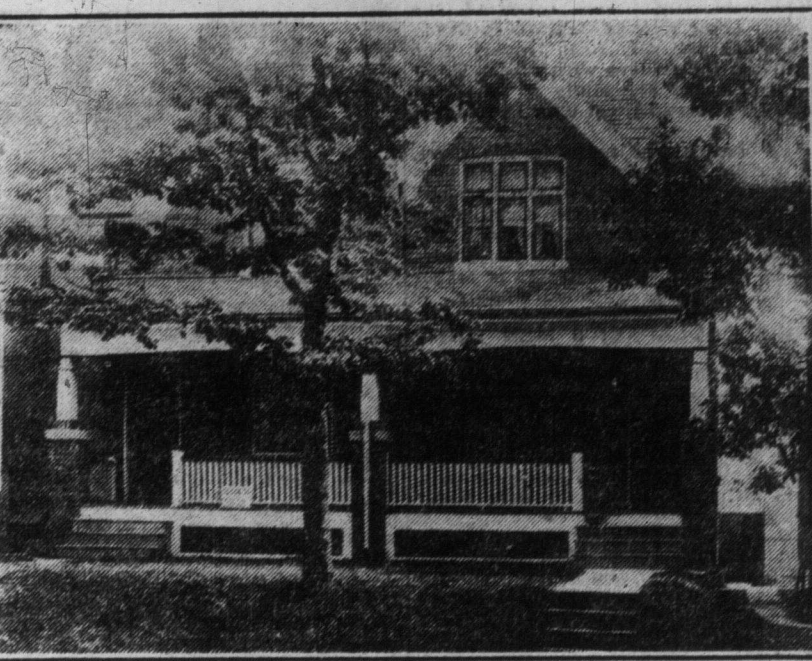
REAL ESTATE WAKEFIELD, COR. St. Clair and Ossington-avenue. Take a Dovercourt car.

ways from departing from the union station idea, and the mayor promised to take a hand the moment it was definitely known that any of the railways intended to pull away.

Holiday Monday. Yesterday afternoon, the board of control reversed its decision of the morning to keep the city hall officials working Easter Monday. The next council meeting will be on Tuesday. A special meeting will be held April 4 to consider the estimates.

The city treasurer will report on the advisability of increasing the salary of Tax Collector Jackson from \$1200 to \$1500, thus placing him on an even footing with others doing similar work. Mr. Jackson was attached by the annexation of West Toronto, where he was formerly employed.

Owing to the use of bleaching powder to disinfect the city water, the number of colonies of coli communis have been reduced since March 19, from 5200 to 390 per cubic centimeter. The analysis also shows that while there was coli communis in the water on March 19, there were absent about March 22.



Open All Day Friday AND Saturday

We are erecting THIRTY solid brick houses at "The Beaches." They contain six and eight rooms; every modern convenience, gas and electric light.

EASY TERMS

W. N. McEACHREN & SON

"HOME BUILDERS."

2193 Queen Street East.