

YONGE STREET ELEVATORS
Customers will relieve the elevators near the north Yonge Street entrance by using the new electric elevators nearest the south (main) Yonge Street entrance.

EATON'S DAILY STORE NEWS

TELEPHONE SERVICE—When ordering from more than one department, call City Order, Adelaide 3474, and give your entire order. Orders promptly despatched to departments.

STORE CLOSED TODAY—THANKSGIVING DAY

AND ON ABOUT THANKSGIVING

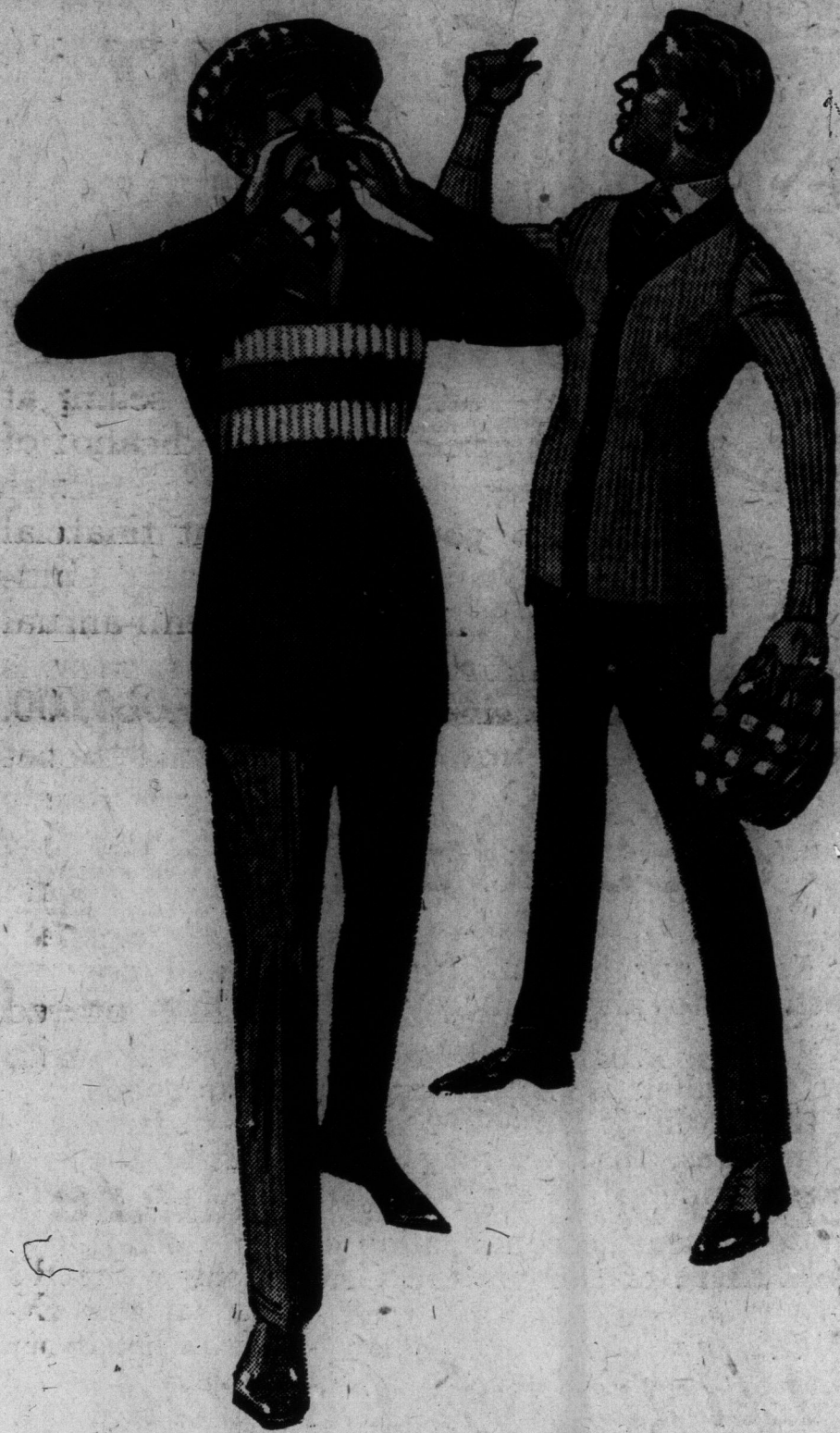
ONE'S THOUGHTS TURN TO

NEWER THINGS
WARMER THINGS
—SUCH AS—

Sweater Coats, Sweater Vests and Sweaters of All-wool and Brushed Wool Materials.

Underwear of the "Duofold," "Richmond," and "Ceetee" Preferred Brands

Which forms such a varied selection in the Annex and on the Main Floor counters.



1869 - 1919

GOLDEN JUBILEE

"Shorter Hours"
"Better Service"

Store Opens at 8.30 a.m.
Closing Daily at 5 p.m.

CLOSING ON SATURDAY
AT 1 P.M.

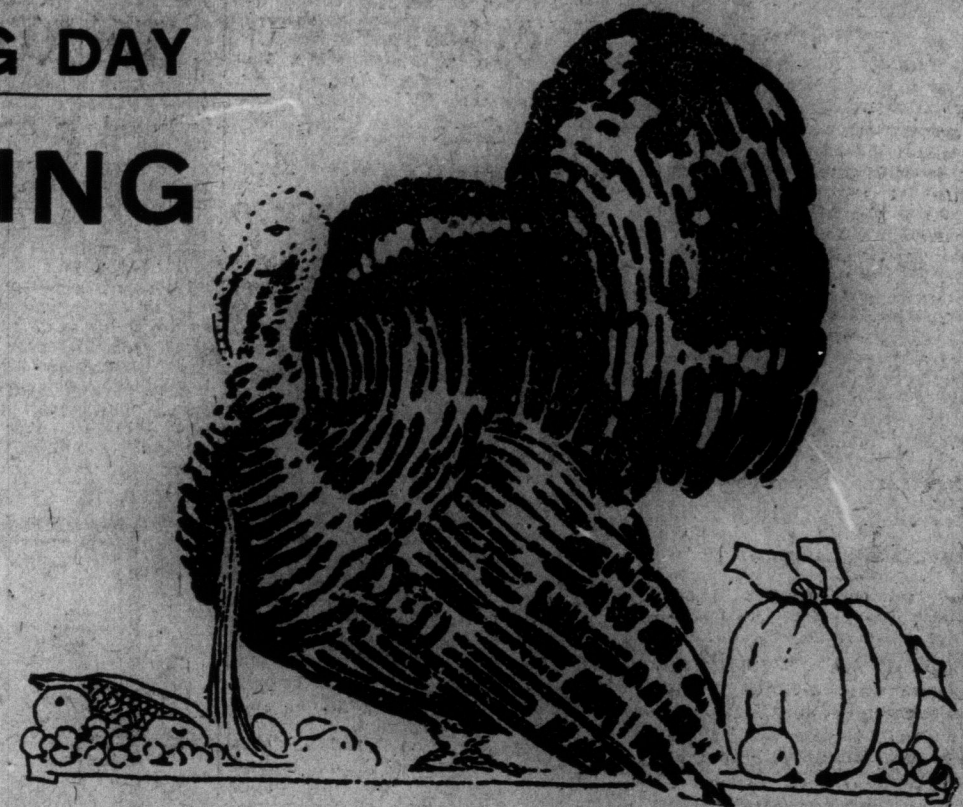
No Noon Delivery Saturday

WATCH FOR ANNOUNCEMENT
—OF—

Harvest Home Festival

Which Begins on
Wednesday, Oct. 15th

Suits and Overcoats of Wool and Cotton Tweed, and Cotton and Wool Materials.



As for the Suits They're EATON-made and Offer Value for Every Dollar.

Note Their Moderate Pricing—\$20.00, \$25.00 and \$35.00.

A Suit at \$20.00 is Designed for the Youth Along Mannish Lines.

It's in the body-fitting type, in double-breasted style, with all-round waist seam, peaked lapels and slash pockets; material is a firmly-woven cotton and wool tweed of good weight, in a neat check pattern and medium and dark grey shade; vest is medium high and closes with five buttons, trousers have belt loops, five strong pockets and cuff bottoms. Sizes 33 to 37. Price, \$20.00.

At \$20.00 is a Man's Suit, in a semi-fitting, three-button sacque style, with notched lapels, two body pockets with flaps; grey and cotton and wool tweed, in neat checked patterns; vest closes with five buttons and is of fashionable height; trousers are well proportioned and have five good pockets, belt loops and plain bottoms. Sizes 36 to 44. Price, \$20.00.

At \$25.00 is the Blackstone Model, which is a smartly designed model in a three-button style, with neat notched soft roll lapels, regular pockets and lining of Italian twill material; consists of cotton and wool tweed, in a small checked pattern, in either a medium or dark grey shade. Trousers are straight cut and have belt loops, two hip, two side and one watch pocket, plain bottoms. Sizes 36 to 44. Price, \$25.00.

At \$35.00 is a Man's All-Wool Tweed Suit, in neat pepper and salt patterns, formed by the combination of black, brown and light grey yarns; the model is a plain two-button, body-fitting style, with the new wide collar, high peaked soft roll lapels and slightly slanted pockets; trousers are smartly cut and have one watch, two hip, two side pockets and tunnel and belt loops, plain or with cuffs. Sizes 34 to 40. Price, \$35.00.

The Overcoats, Which Have Been Made to Comply With EATON Specifications as to Quality of Cloth and Tailoring, Are Priced at \$30.00, \$32.50 and \$33.50.

At \$30.00 is a Dark Brown Wool and Cotton Tweed Coat in flaked pattern. It is a two-button, body-fitting style, with all-around waist seam and wide notched lapels; slash pockets and full lining of twill material. Sizes 35 to 42. Price, \$30.00.

At \$32.50 is a Dark Grey Cheviot Finish Tweed Coat in the popular semi-fitting, single-breasted, fly-fronted style, with snug-fitting collar, notched lapels and regular pockets with flaps. The material is a union wool and cotton fabric. Sizes 35 to 44. Price, \$32.50.

At \$33.50 is a Young Man's Coat of brown wool and cotton tweed, with neat herringbone twill. At this price and of the same cloth are two models. One is the "Winthrop," a single-breasted, waist-seam style, with wide notched lapels and slash pockets. The other is the "Biltmore," a three-button, double-breasted style. Both are full lined with Italian twill. Sizes 35 to 42. Price, \$33.50.

—Main Floor, Queen St.

At \$6.00 Are All-Wool Sweaters with double-roll collars, and in plain shades of maroon, brown, royal blue and combinations of black and orange, royal and white, maroon and grey.

Also at the same price are "V" Necked Sweaters in grey with navy and roll, or red with grey trimming. Sizes 34 to 42. Price, \$6.00.

At \$7.95 Are All-Wool Sweater Coats in Jumbo stitch, with shawl collars and closely ribbed cuffs; are reinforced at shoulders and have trim down front. In plain shades of grey, maroon and dark brown. Sizes 38 to 42. Special value, \$7.95.

At \$8.50 Are Brushed Wool Sweater Vests with four pockets and pearl buttons. In neat shades of heather, dark grey and pearl. Sizes 36 to 42. Price, \$8.50.

At \$10.00 Are EATON-Made All-Wool Coats in heavy Jumbo stitch, with large shawl collar, closely ribbed cuffs, reinforced seams at shoulders and armholes. In plain grey or maroon. Sizes 38 to 44. Price, \$10.00.

At \$11.00 Are All-Wool Sweater Coats, in plain and fancy stitches. Some, with shawl collars, are available in plain Oxford, dark brown, maroon, slate or fawn. Others, with storm or military collars, are in combinations of black and orange, royal and white, black and purple, brown and green. Sizes 38 to 44. Price, \$11.00.

At \$16.00 Are All-Wool Sweater Coats, in heavy Jumbo stitch, with fashioned shawl collar, long cuffs that may be turned back, pearl buttons and reinforced shoulders. In plain Oxford, grey or maroon. Sizes 38 to 44. Price, \$16.00.

In the Men's Wear Annex.

At \$8.00 are "Duofold" Combinations of wool and cotton, with an inner lining of fine cotton, giving the wearer the heat of wool and the comfort of cotton. Have French neck, fine elastic ribbed cuffs and ankles. Sizes 34 to 44. Price, suit, \$8.00.

At \$3.50 are "Richmond" Combinations of heavy cotton, natural color and fine elastic rib; just the weight for present wear. Have French neck, close-fitting cuffs and ankles. Sizes 34 to 42. Suit, \$3.50.

Then there are "Ceetee" Pure Wool Shirts and Drawers, in light natural shade. Shirts have French neck, double breast, close-fitting cuffs, and are long in the skirt. Drawers have adjustable band suspender tapes, close-fitting ankles.

Sizes 34 to 40 shirts; 32 to 38 drawers. A garment, \$5.00.

Sizes 42 to 50 shirts; 40 to 48 drawers. A garment, \$5.50.

THE T. EATON CO LIMITED