

### Municipal Supplies...

Rock Crushers with Elevators and Revolving Screens, Road Graders, Mud Scrapers, Watering Carts, Steam Road Rollers, Fire Engines, Etc

T. A. Morrison & Co., 204 St. James St., Montreal.

## WATERWORKS PUMPS

Municipalities contemplating the installation of waterworks pumps will find it to their advantage to investigate our pumps—both as to cost and service.

Northey pumps are giving satisfaction under all sorts of conditions in scores of towns in Canada.

WE MAKE

# Pumping Machinery

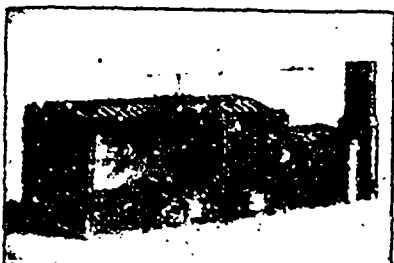
"For all Duties"

Write or telegraph and we will send a representative to you to make a personal inspection.

Northey pumps are designed for efficient, continuous work and meet the requirements.

## THE Northey Company Limited, Toronto

Locomotive Turn Tables, Roofs, Steel Buildings and Structural Iron Work of all descriptions



# JOSSON CEMENT .. Manufactured at.. NIEL ON RUPELL

Is the Highest Grade Artificial Portland Cement and the Best for High Class Work. Has been used largely for Government and Municipal Works.

TO BE HAD FROM ALL CANADIAN DEALERS

C. I. de Sola, Manager in Canada :: 180 St. James Street, MONTREAL

## Dominion Bridge Co., Ltd.

P. O. Address, MONTREAL, P. Q. Works at LACHINE LOCKS, P. Q.

## STEEL BRIDGES

For Railways and Highways Piers, Trestles, Water Towers Tanks, Buildings, Roofs, Girders, Beams and Columns

Toronto Agent: GEO. B. EVANS, 39 Canada Life Bldg., TORONTO, ONT

## THE CANADIAN SEWER PIPE CO.

MANUFACTURERS OF ..



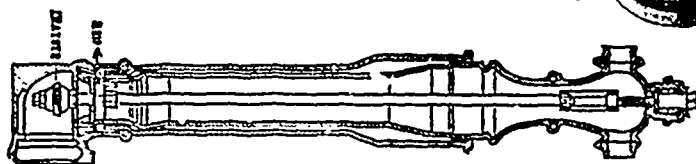
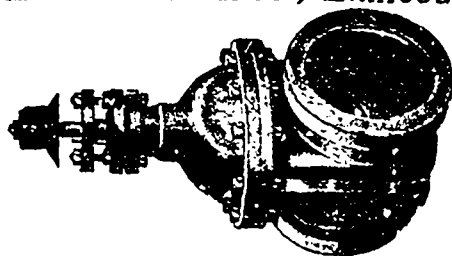
- FOR -  
**Sewers**  
CULVERTS  
AND  
WATER PIPES.  
**INVERTS**  
Brick Sewers  
Write for Discounts  
TORONTO  
ONT.

## The KERR ENGINE COMPANY, Limited

PUMPING MACHINERY  
HYDRANTS and VALVES  
Are our Specialty

Don't fail to write us for Catalogue and prices.

WALKERVILLE, - ONTARIO



## The Canadian Bridge Co., Limited

WALKERVILLE, ONT.

MANUFACTURERS OF

## RAILWAY AND HIGHWAY BRIDGES

## PERFECTION STEEL-GLAD AND BRICK SET INCINERATORS

MANUFACTURED By Toronto Furnance & Crematory Co., LIMITED

14 and 16 Queen St East, TORONTO, CANADA.

Experts in sanitary disposal of dangerous wastes,

Garbage, Refuse, Night Soil, Dead Animals,

For Cities, Towns, Hospitals, Hotels, Abattoirs, etc.

The plants embody the newest features of modern practice and are constructed to meet the requirements of the smallest towns and the largest cities, capacities ranging from 4 to 100 tons daily. Correspondence invited.